

**DBF4B Polyclonal Antibody**  
**Purified Rabbit Polyclonal Antibody (Pab)**  
**Catalog # AP58303**

**Specification**

---

**DBF4B Polyclonal Antibody - Product Information**

Application	WB
Primary Accession	<a href="#">Q8NFT6</a>
Host	Rabbit
Clonality	Polyclonal
Calculated MW	67243

**DBF4B Polyclonal Antibody - Additional Information**

**Gene ID** 80174

**Other Names**

Protein DBF4 homolog B, Activator of S phase kinase-like protein 1, ASK-like protein 1, Chiffon homolog B, Dbf4-related factor 1, DBF4B, ASKL1, DRF1

**Format**

0.01M TBS(pH7.4), 0.09% (W/V) sodium azide and 50% Glyce

**Storage**

Store at -20 °C for one year. Avoid repeated freeze/thaw cycles. When reconstituted in sterile pH 7.4 0.01M PBS or diluent of antibody the antibody is stable for at least two weeks at 2-4 °C.

**DBF4B Polyclonal Antibody - Protein Information**

**Name** DBF4B

**Synonyms** ASKL1, DRF1

**Function**

Regulatory subunit for CDC7 which activates its kinase activity thereby playing a central role in DNA replication and cell proliferation. Required for progression of S and M phases. The complex CDC7-DBF4B selectively phosphorylates MCM2 subunit at 'Ser-40' and then is involved in regulating the initiation of DNA replication during cell cycle.

**Cellular Location**

Nucleus. Note=Predominantly found in soluble fraction but not in the chromatin-bound fraction

**Tissue Location**

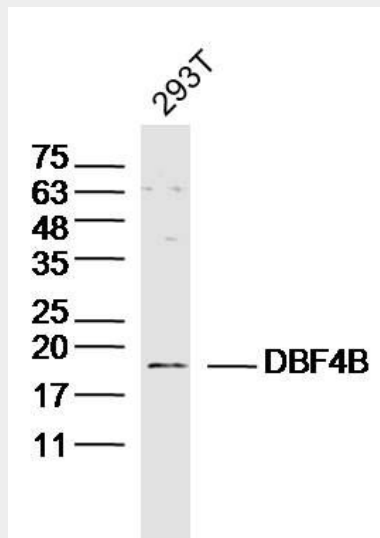
Widely expressed. Highly expressed in testis.

**DBF4B Polyclonal Antibody - Protocols**

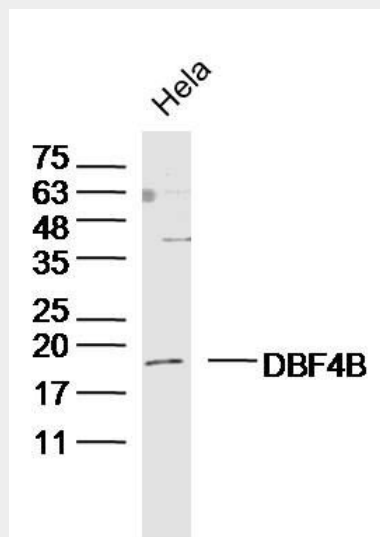
Provided below are standard protocols that you may find useful for product applications.

- [Western Blot](#)
- [Blocking Peptides](#)
- [Dot Blot](#)
- [Immunohistochemistry](#)
- [Immunofluorescence](#)
- [Immunoprecipitation](#)
- [Flow Cytometry](#)
- [Cell Culture](#)

#### DBF4B Polyclonal Antibody - Images

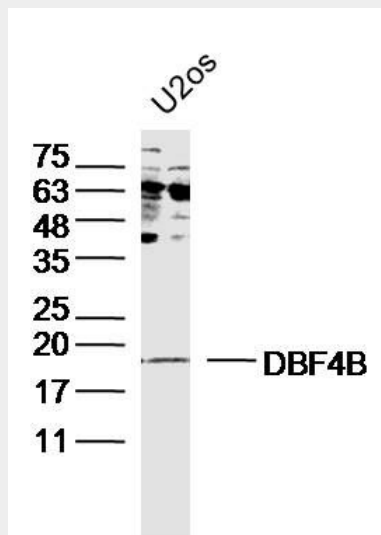


Sample: 293T Cell (Human) Lysate at 30 ug  
Primary: Anti-DBF4B (bs-5748R) at 1/300 dilution  
Secondary: IRDye800CW Goat Anti-Rabbit IgG at 1/20000 dilution  
Predicted band size: 18kD  
Observed band size: 18kD



Sample: HeLa Cell (Human) Lysate at 30 ug

Primary: Anti-DBF4B (bs-5748R) at 1/300 dilution  
Secondary: IRDye800CW Goat Anti-Rabbit IgG at 1/20000 dilution  
Predicted band size: 18kD  
Observed band size: 18kD



Sample: U2os Cell (Human) Lysate at 30 ug  
Primary: Anti-DBF4B (bs-5748R) at 1/300 dilution  
Secondary: IRDye800CW Goat Anti-Rabbit IgG at 1/20000 dilution  
Predicted band size: 18kD  
Observed band size: 18kD