

**CYP4A22 Polyclonal Antibody**  
**Purified Rabbit Polyclonal Antibody (Pab)**  
**Catalog # AP58268**

## Specification

---

### CYP4A22 Polyclonal Antibody - Product Information

Application	WB
Primary Accession	<a href="#">Q5TCH4</a>
Reactivity	Rat
Host	Rabbit
Clonality	Polyclonal
Calculated MW	59246

### CYP4A22 Polyclonal Antibody - Additional Information

**Gene ID** 284541

#### Other Names

Cytochrome P450 4A22, CYP4A22, Fatty acid omega-hydroxylase, Lauric acid omega-hydroxylase, Long-chain fatty acid omega-monooxygenase, 1.14.14.80, CYP4A22

#### Format

0.01M TBS(pH7.4), 0.09% (W/V) sodium azide and 50% Glyce

#### Storage

Store at -20 °C for one year. Avoid repeated freeze/thaw cycles. When reconstituted in sterile pH 7.4 0.01M PBS or diluent of antibody the antibody is stable for at least two weeks at 2-4 °C.

### CYP4A22 Polyclonal Antibody - Protein Information

**Name** CYP4A22

#### Function

Catalyzes the omega- and (omega-1)-hydroxylation of various fatty acids such as laurate and palmitate. Shows no activity towards arachidonic acid and prostaglandin A1. Lacks functional activity in the kidney and does not contribute to renal 20-hydroxyeicosatetraenoic acid (20-HETE) biosynthesis.

#### Cellular Location

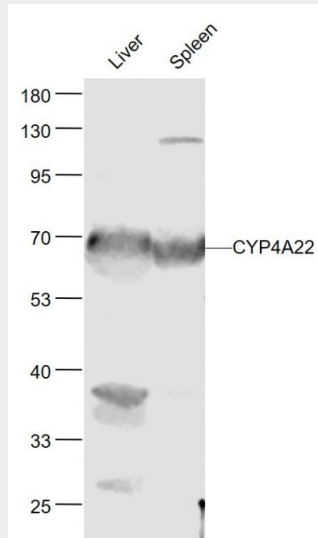
Endoplasmic reticulum membrane; Peripheral membrane protein. Microsome membrane; Peripheral membrane protein

### CYP4A22 Polyclonal Antibody - Protocols

Provided below are standard protocols that you may find useful for product applications.

- [Western Blot](#)
- [Blocking Peptides](#)
- [Dot Blot](#)
- [Immunohistochemistry](#)
- [Immunofluorescence](#)
- [Immunoprecipitation](#)
- [Flow Cytometry](#)
- [Cell Culture](#)

### CYP4A22 Polyclonal Antibody - Images



#### Sample:

Liver (Mouse) Lysate at 40 ug

Spleen (Mouse) Lysate at 40 ug

Primary: Anti-CYP4A22 (bs-5055R) at 1/1000 dilution

Secondary: IRDye800CW Goat Anti-Rabbit IgG at 1/20000 dilution

Predicted band size: 58 kD

Observed band size: 58 kD