

PAPOLB Polyclonal Antibody
Purified Rabbit Polyclonal Antibody (Pab)
Catalog # AP58255

Specification

PAPOLB Polyclonal Antibody - Product Information

Application	IHC-P
Primary Accession	O9NRJ5
Reactivity	Rat, Pig, Bovine
Host	Rabbit
Clonality	Polyclonal
Calculated MW	71813

PAPOLB Polyclonal Antibody - Additional Information

Gene ID 56903

Other Names

Poly(A) polymerase beta, PAP-beta, 2.7.7.19, Polynucleotide adenylyltransferase beta, Testis-specific poly(A) polymerase, PAPOLB, PAPT

Format

0.01M TBS(pH7.4), 0.09% (W/V) sodium azide and 50% Glyce

Storage

Store at -20 °C for one year. Avoid repeated freeze/thaw cycles. When reconstituted in sterile pH 7.4 0.01M PBS or diluent of antibody the antibody is stable for at least two weeks at 2-4 °C.

PAPOLB Polyclonal Antibody - Protein Information

Name PAPOLB ([HGNC:15970](#))

Synonyms PAPT

Cellular Location

Nucleus.

Tissue Location

Testis specific.

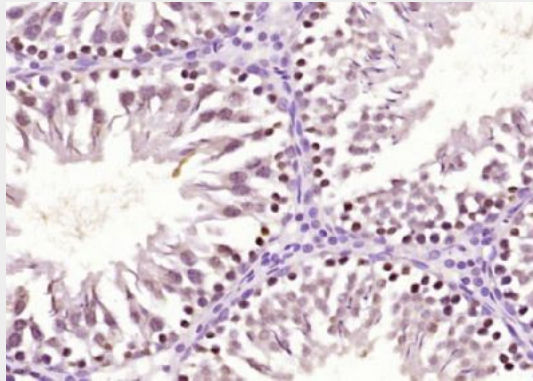
PAPOLB Polyclonal Antibody - Protocols

Provided below are standard protocols that you may find useful for product applications.

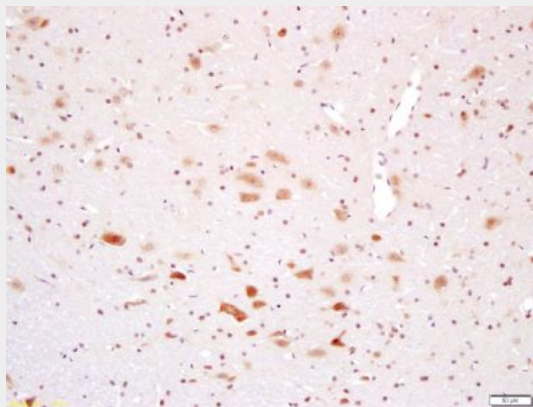
- [Western Blot](#)
- [Blocking Peptides](#)

- [Dot Blot](#)
- [Immunohistochemistry](#)
- [Immunofluorescence](#)
- [Immunoprecipitation](#)
- [Flow Cytometry](#)
- [Cell Culture](#)

PAPOLB Polyclonal Antibody - Images



Paraformaldehyde-fixed, paraffin embedded (rat testis tissue); Antigen retrieval by boiling in sodium citrate buffer (pH6.0) for 15min; Block endogenous peroxidase by 3% hydrogen peroxide for 20 minutes; Blocking buffer (normal goat serum) at 37°C for 30min; Antibody incubation with (PAPOLB) Polyclonal Antibody, Unconjugated (bs-4967R) at 1:400 overnight at 4°C, followed by operating according to SP Kit(Rabbit) (sp-0023) instructions and DAB staining.



Tissue/cell: rat brain tissue; 4% Paraformaldehyde-fixed and paraffin-embedded;
Antigen retrieval: citrate buffer (0.01M, pH 6.0), Boiling bathing for 15min; Block endogenous peroxidase by 3% Hydrogen peroxide for 30min; Blocking buffer (normal goat serum,C-0005) at 37°C for 20 min;
Incubation: Anti-PAPOLB Polyclonal Antibody, Unconjugated(bs-4967R) 1:200, overnight at 4°C, followed by conjugation to the secondary antibody(SP-0023) and DAB(C-0010) staining