

**Endomucin Polyclonal Antibody**  
**Purified Rabbit Polyclonal Antibody (Pab)**  
**Catalog # AP58247**

**Specification**

---

**Endomucin Polyclonal Antibody - Product Information**

Application	IHC-P
Primary Accession	<a href="#">O9ULC0</a>
Host	Rabbit
Clonality	Polyclonal
Calculated MW	27452

**Endomucin Polyclonal Antibody - Additional Information**

**Gene ID** 51705

**Other Names**

Endomucin, Endomucin-2, Gastric cancer antigen Ga34, Mucin-14, MUC-14, EMCN, EMCN2, MUC14

**Format**

0.01M TBS(pH7.4), 0.09% (W/V) sodium azide and 50% Glyce

**Storage**

Store at -20 °C for one year. Avoid repeated freeze/thaw cycles. When reconstituted in sterile pH 7.4 0.01M PBS or diluent of antibody the antibody is stable for at least two weeks at 2-4 °C.

**Endomucin Polyclonal Antibody - Protein Information**

**Name** EMCN

**Synonyms** EMCN2, MUC14

**Function**

Endothelial sialomucin, also called endomucin or mucin-like sialoglycoprotein, which interferes with the assembly of focal adhesion complexes and inhibits interaction between cells and the extracellular matrix.

**Cellular Location**

[Isoform 1]: Cell membrane; Single-pass type I membrane protein. Membrane; Single-pass type I membrane protein Note=Consistently localized to the plasma membrane and less abundantly to Golgi-like perinuclear stacks

**Tissue Location**

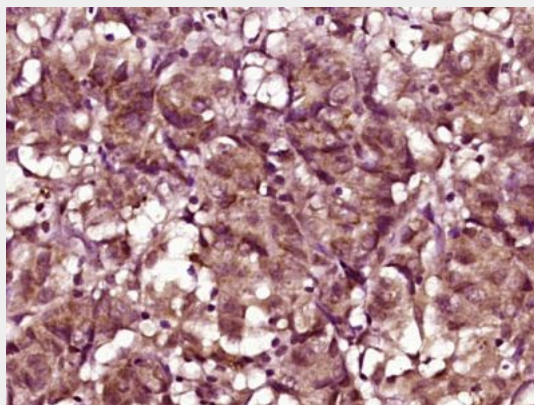
Expressed in heart, kidney and lung.

**Endomucin Polyclonal Antibody - Protocols**

Provided below are standard protocols that you may find useful for product applications.

- [Western Blot](#)
- [Blocking Peptides](#)
- [Dot Blot](#)
- [Immunohistochemistry](#)
- [Immunofluorescence](#)
- [Immunoprecipitation](#)
- [Flow Cytometry](#)
- [Cell Culture](#)

#### **Endomucin Polyclonal Antibody - Images**



Paraformaldehyde-fixed, paraffin embedded (human colon carcinoma); Antigen retrieval by boiling in sodium citrate buffer (pH6.0) for 15min; Block endogenous peroxidase by 3% hydrogen peroxide for 20 minutes; Blocking buffer (normal goat serum) at 37°C for 30min; Antibody incubation with (Endomucin) Polyclonal Antibody, Unconjugated (bs-4808R) at 1:400 overnight at 4°C, followed by operating according to SP Kit(Rabbit) (sp-0023) instructions and DAB staining.