

NROB2 Polyclonal Antibody
Purified Rabbit Polyclonal Antibody (Pab)
Catalog # AP58149

Specification

NROB2 Polyclonal Antibody - Product Information

Application	IHC-P
Primary Accession	Q15466
Reactivity	Rat, Dog, Bovine
Host	Rabbit
Clonality	Polyclonal
Calculated MW	28058

NROB2 Polyclonal Antibody - Additional Information

Gene ID 8431

Other Names

Nuclear receptor subfamily 0 group B member 2, Orphan nuclear receptor SHP, Small heterodimer partner, NROB2, SHP

Format

0.01M TBS(pH7.4), 0.09% (W/V) sodium azide and 50% Glyce

Storage

Store at -20 °C for one year. Avoid repeated freeze/thaw cycles. When reconstituted in sterile pH 7.4 0.01M PBS or diluent of antibody the antibody is stable for at least two weeks at 2-4 °C.

NROB2 Polyclonal Antibody - Protein Information

Name NROB2

Synonyms SHP

Function

Transcriptional regulator that acts as a negative regulator of receptor-dependent signaling pathways (PubMed: <http://www.uniprot.org/citations/22504882> target="_blank">22504882). Specifically inhibits transactivation of the nuclear receptor with which it interacts (PubMed: <http://www.uniprot.org/citations/22504882> target="_blank">22504882). Inhibits transcriptional activity of NEUROD1 on E-box-containing promoter by interfering with the coactivation function of the p300/CBP-mediated transcription complex for NEUROD1 (PubMed: <http://www.uniprot.org/citations/14752053> target="_blank">14752053). Essential component of the liver circadian clock which via its interaction with NR1D1 and RORG regulates NPAS2-mediated hepatic lipid metabolism (By similarity). Regulates the circadian expression of cytochrome P450 (CYP) enzymes (By similarity). Represses: NR5A2 and HNF4A to down-regulate CYP2C38, NFLI3 to up-regulate CYP2A5, BHLHE41/HNF1A axis to up-regulate CYP1A2, CYP2E1 and CYP3A11, and NR1D1 to up-regulate CYP2B10, CYP4A10 and CYP4A14 (By similarity).

Cellular Location

Nucleus. Cytoplasm Note=Colocalizes with NEUROD1 in the nucleus

Tissue Location

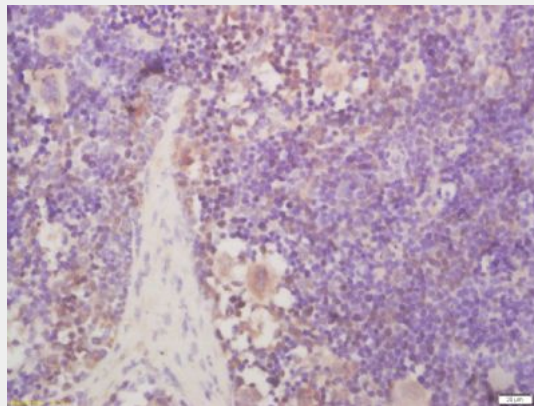
Liver. Low levels of expression were detected in heart and pancreas.

NR0B2 Polyclonal Antibody - Protocols

Provided below are standard protocols that you may find useful for product applications.

- [Western Blot](#)
- [Blocking Peptides](#)
- [Dot Blot](#)
- [Immunohistochemistry](#)
- [Immunofluorescence](#)
- [Immunoprecipitation](#)
- [Flow Cytometry](#)
- [Cell Culture](#)

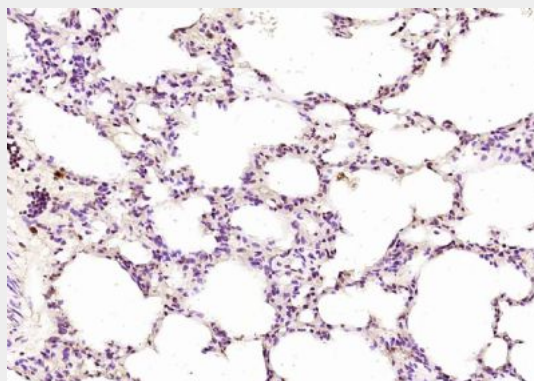
NR0B2 Polyclonal Antibody - Images



Tissue/cell: mouse spleen tissue; 4% Paraformaldehyde-fixed and paraffin-embedded;

Antigen retrieval: citrate buffer (0.01M, pH 6.0), Boiling bathing for 15min; Block endogenous peroxidase by 3% Hydrogen peroxide for 30min; Blocking buffer (normal goat serum,C-0005) at 37°C for 20 min;

Incubation: Anti-NROB2 Polyclonal Antibody, Unconjugated(bs-4311R) 1:200, overnight at 4°C, followed by conjugation to the secondary antibody(SP-0023) and DAB(C-0010) staining



Paraformaldehyde-fixed, paraffin embedded (rat lung); Antigen retrieval by boiling in sodium citrate buffer (pH6.0) for 15min; Block endogenous peroxidase by 3% hydrogen peroxide for 20 minutes; Blocking buffer (normal goat serum) at 37°C for 30min; Antibody incubation with (NR0B2) Polyclonal Antibody, Unconjugated (bs-4311R) at 1:200 overnight at 4°C, followed by operating according to SP Kit(Rabbit) (sp-0023) instructions and DAB staining.