

APH1a Polyclonal Antibody
Purified Rabbit Polyclonal Antibody (Pab)
Catalog # AP58139

Specification

APH1a Polyclonal Antibody - Product Information

Application	IF, FC
Primary Accession	O96BI3
Reactivity	Rat, Pig, Dog, Bovine
Host	Rabbit
Clonality	Polyclonal
Calculated MW	28996

APH1a Polyclonal Antibody - Additional Information

Gene ID 51107

Other Names

Gamma-secretase subunit APH-1A, APH-1a, Aph-1alpha, Presenilin-stabilization factor, APH1A, PSF

Format

0.01M TBS(pH7.4), 0.09% (W/V) sodium azide and 50% Glyce

Storage

Store at -20 °C for one year. Avoid repeated freeze/thaw cycles. When reconstituted in sterile pH 7.4 0.01M PBS or diluent of antibody the antibody is stable for at least two weeks at 2-4 °C.

APH1a Polyclonal Antibody - Protein Information

Name APH1A

Synonyms PSF

Function

Non-catalytic subunit of the gamma-secretase complex, an endoprotease complex that catalyzes the intramembrane cleavage of integral membrane proteins such as Notch receptors and APP (amyloid- beta precursor protein) (PubMed: [12297508](http://www.uniprot.org/citations/12297508), PubMed: [12522139](http://www.uniprot.org/citations/12522139), PubMed: [12679784](http://www.uniprot.org/citations/12679784), PubMed: [12763021](http://www.uniprot.org/citations/12763021), PubMed: [25043039](http://www.uniprot.org/citations/25043039), PubMed: [26280335](http://www.uniprot.org/citations/26280335), PubMed: [30598546](http://www.uniprot.org/citations/30598546), PubMed: [30630874](http://www.uniprot.org/citations/30630874)). Required for normal gamma-secretase assembly (PubMed: [12471034](http://www.uniprot.org/citations/12471034), PubMed: [12522139](http://www.uniprot.org/citations/12522139), PubMed: [12763021](http://www.uniprot.org/citations/12763021), PubMed: [12763021](http://www.uniprot.org/citations/12763021)).

[19369254](http://www.uniprot.org/citations/19369254)). The gamma-secretase complex plays a role in Notch and Wnt signaling cascades and regulation of downstream processes via its role in processing key regulatory proteins, and by regulating cytosolic CTNNB1 levels (Probable).

Cellular Location

Endoplasmic reticulum membrane; Multi-pass membrane protein. Golgi apparatus, Golgi stack membrane; Multi-pass membrane protein. Note=Predominantly located in the endoplasmic reticulum and in the cis-Golgi

Tissue Location

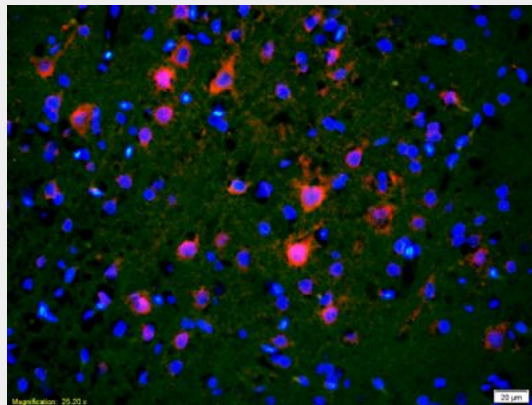
Widely expressed. Expressed in leukocytes, lung, placenta, small intestine, liver, kidney, spleen thymus, skeletal muscle, heart and brain. Isoform 1 and isoform 2 are nearly expressed at the same level.

APH1a Polyclonal Antibody - Protocols

Provided below are standard protocols that you may find useful for product applications.

- [Western Blot](#)
- [Blocking Peptides](#)
- [Dot Blot](#)
- [Immunohistochemistry](#)
- [Immunofluorescence](#)
- [Immunoprecipitation](#)
- [Flow Cytometry](#)
- [Cell Culture](#)

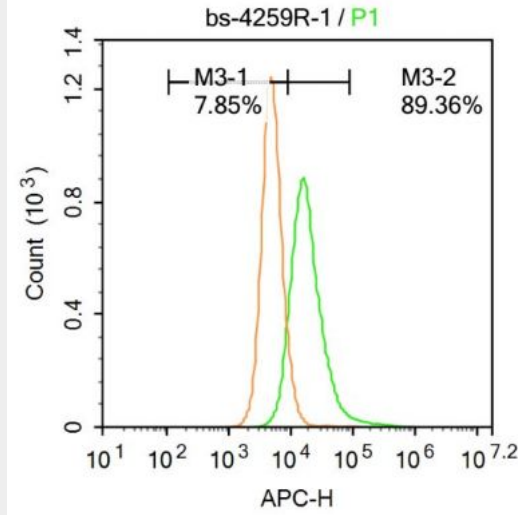
APH1a Polyclonal Antibody - Images



Tissue/cell: rat brain tissue;4% Paraformaldehyde-fixed and paraffin-embedded;

Antigen retrieval: citrate buffer (0.01M, pH 6.0), Boiling bathing for 15min; Blocking buffer (normal goat serum,C-0005) at 37°C for 20 min;

Incubation: Anti-APH1a Polyclonal Antibody, Unconjugated(bs-4259R) 1:200, overnight at 4°C; The secondary antibody was Goat Anti-Rabbit IgG, Cy3 conjugated(bs-0295G-Cy3)used at 1:200 dilution for 40 minutes at 37°C. DAPI(5ug/ml,blue,C-0033) was used to stain the cell nuclei



Blank control: A431.

Primary Antibody (green line): Rabbit Anti-APH1a antibody (bs-4259R)

Dilution: 1 μ g / 10^6 cells;

Isotype Control Antibody (orange line): Rabbit IgG .

Secondary Antibody: Goat anti-rabbit IgG-AF647

Dilution: 1 μ g /test.

Protocol

The cells were incubated in 5%BSA to block non-specific protein-protein interactions for 30 min at room temperature .Cells stained with Primary Antibody for 30 min at room temperature. The secondary antibody used for 40 min at room temperature. Acquisition of 20,000 events was performed.