

Ube2B Polyclonal Antibody
Purified Rabbit Polyclonal Antibody (Pab)
Catalog # AP58138**Specification**

Ube2B Polyclonal Antibody - Product Information

Application	FC
Primary Accession	P63146
Reactivity	Rat, Pig
Host	Rabbit
Clonality	Polyclonal
Calculated MW	17312

Ube2B Polyclonal Antibody - Additional Information**Gene ID** 7320**Other Names**

Ubiquitin-conjugating enzyme E2 B, 2.3.2.23, E2 ubiquitin-conjugating enzyme B, RAD6 homolog B, HR6B, hHR6B, Ubiquitin carrier protein B, Ubiquitin-conjugating enzyme E2-17 kDa, Ubiquitin-protein ligase B, UBE2B, RAD6B

Format

0.01M TBS(pH7.4), 0.09% (W/V) sodium azide and 50% Glyce

Storage

Store at -20 °C for one year. Avoid repeated freeze/thaw cycles. When reconstituted in sterile pH 7.4 0.01M PBS or diluent of antibody the antibody is stable for at least two weeks at 2-4 °C.

Ube2B Polyclonal Antibody - Protein Information**Name** UBE2B ([HGNC:12473](#))**Function**

E2 ubiquitin-conjugating enzyme that accepts ubiquitin from the ubiquitin-activating enzyme E1 and transfers it to a E3 ubiquitin- protein ligase (PubMed:16337599, PubMed:17108083, PubMed:17130289, PubMed:1717990, PubMed:20061386). In vitro catalyzes 'Lys-11'-, as well as 'Lys-48'- and 'Lys-63'-linked polyubiquitination (PubMed:20061386). Together with the E3 enzyme BRE1 (RNF20 and/or RNF40), plays a role in transcription regulation by catalyzing the monoubiquitination of histone H2B at 'Lys-120' to form H2BK120ub1 (PubMed:16337599). H2BK120ub1 gives a specific tag for epigenetic transcriptional activation, elongation by RNA polymerase II, telomeric silencing, and is also a prerequisite for H3K4me and H3K79me formation (PubMed:16337599). May play a role in DNA repair (PubMed:8062904). Associates to the E3 ligase RAD18 to form the UBE2B-RAD18 ubiquitin ligase complex involved in mono-ubiquitination of DNA-associated PCNA on 'Lys-164' (PubMed:17108083, PubMed:17130289). In association with the E3 enzyme UBR4, is involved in N-end rule-dependent protein degradation (PubMed:38182926). May be involved in neurite outgrowth (By similarity).

Cellular Location

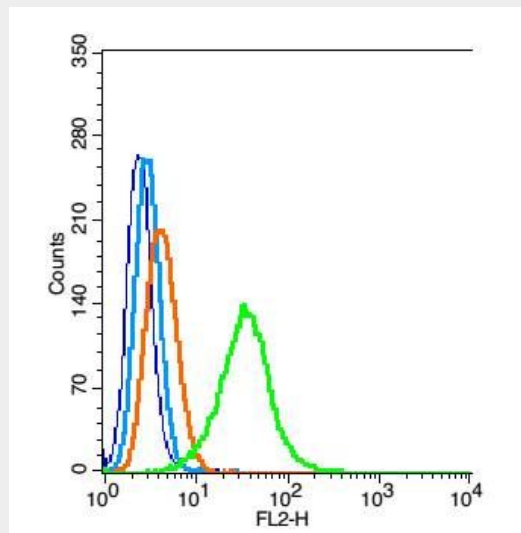
Cell membrane {ECO:0000250|UniProtKB:P63149}. Nucleus {ECO:0000250|UniProtKB:P63149}. Note=In peripheral neurons, expressed both at the plasma membrane and in nuclei {ECO:0000250|UniProtKB:P63149}

Ube2B Polyclonal Antibody - Protocols

Provided below are standard protocols that you may find useful for product applications.

- [Western Blot](#)
- [Blocking Peptides](#)
- [Dot Blot](#)
- [Immunohistochemistry](#)
- [Immunofluorescence](#)
- [Immunoprecipitation](#)
- [Flow Cytometry](#)
- [Cell Culture](#)

Ube2B Polyclonal Antibody - Images



Blank control: Hela(blue), the cells were fixed with 2% paraformaldehyde (10 min) and then permeabilized with ice-cold 90% methanol for 30 min on ice..

Isotype Control Antibody: Rabbit IgG(orange) ; Secondary Antibody: Goat anti-rabbit IgG-FITC(white blue), Dilution: 1:200 in 1 X PBS containing 0.5% BSA ; Primary Antibody Dilution: 1 µg in 100 µL 1X PBS containing 0.5% BSA(green).