

**Squalene Epoxidase Polyclonal Antibody**  
**Purified Rabbit Polyclonal Antibody (Pab)**  
**Catalog # AP58135**

## Specification

---

### Squalene Epoxidase Polyclonal Antibody - Product Information

Application	WB, IHC-P
Primary Accession	<a href="#">O14534</a>
Reactivity	Rat, Pig, Dog, Bovine
Host	Rabbit
Clonality	Polyclonal
Calculated MW	63923

### Squalene Epoxidase Polyclonal Antibody - Additional Information

**Gene ID** 6713

#### Other Names

Squalene monooxygenase, 1.14.14.17, Squalene epoxidase, SE, SQLE, ERG1

#### Format

0.01M TBS(pH7.4), 0.09% (W/V) sodium azide and 50% Glyce

#### Storage

Store at -20 °C for one year. Avoid repeated freeze/thaw cycles. When reconstituted in sterile pH 7.4 0.01M PBS or diluent of antibody the antibody is stable for at least two weeks at 2-4 °C.

### Squalene Epoxidase Polyclonal Antibody - Protein Information

**Name** SQLE

**Synonyms** ERG1

#### Function

Catalyzes the stereospecific oxidation of squalene to (S)- 2,3-epoxysqualene, and is considered to be a rate-limiting enzyme in steroid biosynthesis.

#### Cellular Location

Microsome membrane; Peripheral membrane protein. Endoplasmic reticulum membrane; Peripheral membrane protein

#### Tissue Location

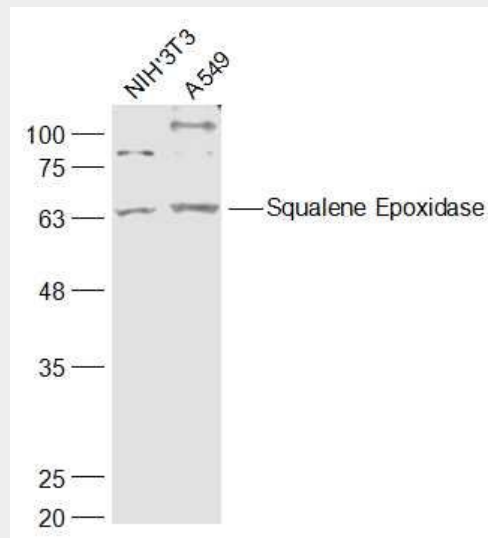
Detected in liver (at protein level).

### Squalene Epoxidase Polyclonal Antibody - Protocols

Provided below are standard protocols that you may find useful for product applications.

- [Western Blot](#)
- [Blocking Peptides](#)
- [Dot Blot](#)
- [Immunohistochemistry](#)
- [Immunofluorescence](#)
- [Immunoprecipitation](#)
- [Flow Cytometry](#)
- [Cell Culture](#)

### Squalene Epoxidase Polyclonal Antibody - Images



#### Sample:

NIH/3T3(Mouse) Cell Lysate at 30 ug

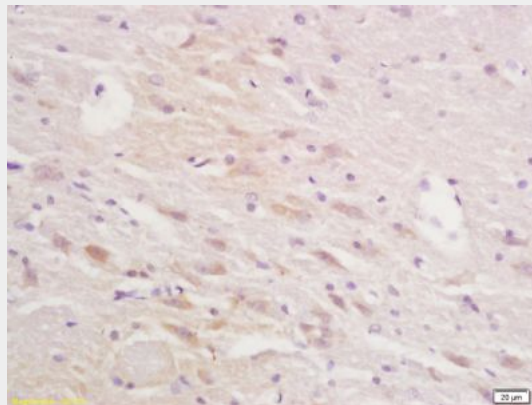
A549(Human) Cell Lysate at 30 ug

Primary: Anti-Squalene Epoxidase (bs-4218R) at 1/1000 dilution

Secondary: IRDye800CW Goat Anti-Rabbit IgG at 1/20000 dilution

Predicted band size: 64 kD

Observed band size: 64 kD



Tissue/cell: rat brain tissue; 4% Paraformaldehyde-fixed and paraffin-embedded;

Antigen retrieval: citrate buffer ( 0.01M, pH 6.0 ), Boiling bathing for 15min; Block endogenous peroxidase by 3% Hydrogen peroxide for 30min; Blocking buffer (normal goat serum,C-0005) at

37°C for 20 min;

Incubation: Anti-Squalene Epoxidase Polyclonal Antibody, Unconjugated(bs-4218R) 1:200, overnight at 4°C, followed by conjugation to the secondary antibody(SP-0023) and DAB(C-0010) staining