

SLC25A20 Polyclonal Antibody
Purified Rabbit Polyclonal Antibody (Pab)
Catalog # AP58130

Specification

SLC25A20 Polyclonal Antibody - Product Information

Application	WB
Primary Accession	O43772
Reactivity	Rat, Bovine
Host	Rabbit
Clonality	Polyclonal
Calculated MW	32944

SLC25A20 Polyclonal Antibody - Additional Information

Gene ID 788

Other Names

Mitochondrial carnitine/acylcarnitine carrier protein, Carnitine/acylcarnitine translocase, CAC, Solute carrier family 25 member 20, SLC25A20 (HGNC:1421), CAC, CACT

Format

0.01M TBS(pH7.4), 0.09% (W/V) sodium azide and 50% Glyce

Storage

Store at -20 °C for one year. Avoid repeated freeze/thaw cycles. When reconstituted in sterile pH 7.4 0.01M PBS or diluent of antibody the antibody is stable for at least two weeks at 2-4 °C.

SLC25A20 Polyclonal Antibody - Protein Information

Name SLC25A20 ([HGNC:1421](#))

Synonyms CAC, CACT

Function

Mediates the electroneutral exchange of acylcarnitines (O- acyl-(R)-carnitine or L-acylcarnitine) of different acyl chain lengths (ranging from O-acetyl-(R)-carnitine to long-chain O-acyl-(R)-carnitines) with free carnitine ((R)-carnitine or L-carnitine) across the mitochondrial inner membrane, via a ping-pong mechanism (Probable) (PubMed:12892634, PubMed:18307102). Key player in the mitochondrial oxidation pathway, it translocates the fatty acids in the form of acylcarnitines into the mitochondrial matrix, where the carnitine palmitoyltransferase 2 (CPT-2) activates them to undergo fatty acid beta-oxidation (Probable). Catalyzes the unidirectional transport (uniport) of carnitine at lower rates than the antiport (exchange) (PubMed:18307102).

Cellular Location

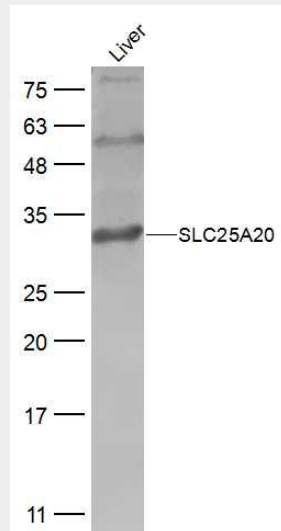
Mitochondrion inner membrane; Multi-pass membrane protein

SLC25A20 Polyclonal Antibody - Protocols

Provided below are standard protocols that you may find useful for product applications.

- [Western Blot](#)
- [Blocking Peptides](#)
- [Dot Blot](#)
- [Immunohistochemistry](#)
- [Immunofluorescence](#)
- [Immunoprecipitation](#)
- [Flow Cytometry](#)
- [Cell Culture](#)

SLC25A20 Polyclonal Antibody - Images



Sample:

Liver (Mouse) Lysate at 40 ug

Primary: Anti-SLC25A20 (bs-4192R) at 1/300 dilution

Secondary: IRDye800CW Goat Anti-Rabbit IgG at 1/20000 dilution

Predicted band size: 33 kD

Observed band size: 33 kD