

**SLC37A4 Polyclonal Antibody**  
**Purified Rabbit Polyclonal Antibody (Pab)**  
**Catalog # AP58120****Specification**

---

**SLC37A4 Polyclonal Antibody - Product Information**

Application	WB
Primary Accession	<a href="#">O43826</a>
Reactivity	Rat, Pig, Dog, Bovine
Host	Rabbit
Clonality	Polyclonal
Calculated MW	46360

**SLC37A4 Polyclonal Antibody - Additional Information****Gene ID** 2542**Other Names**

Glucose-6-phosphate exchanger SLC37A4, Glucose-5-phosphate transporter, Glucose-6-phosphate translocase, Solute carrier family 37 member 4 {ECO:0000312|HGNC:HGNC:4061}, Transformation-related gene 19 protein {ECO:0000312|EMBL:AAS00495.1}, TRG-19 {ECO:0000312|EMBL:AAS00495.1}, SLC37A4 (<a href="http://www.genenames.org/cgi-bin/gene\_symbol\_report?hgnc\_id=4061" target="\_blank">HGNC:4061</a>), G6PT, G6PT1

**Format**

0.01M TBS(pH7.4), 0.09% (W/V) sodium azide and 50% Glyce

**Storage**

Store at -20 °C for one year. Avoid repeated freeze/thaw cycles. When reconstituted in sterile pH 7.4 0.01M PBS or diluent of antibody the antibody is stable for at least two weeks at 2-4 °C.

**SLC37A4 Polyclonal Antibody - Protein Information****Name** SLC37A4 ([HGNC:4061](#))**Synonyms** G6PT, G6PT1**Function**

Inorganic phosphate and glucose-6-phosphate antiporter of the endoplasmic reticulum. Transports cytoplasmic glucose-6-phosphate into the lumen of the endoplasmic reticulum and translocates inorganic phosphate into the opposite direction (PubMed:<a href="http://www.uniprot.org/citations/33964207" target="\_blank">33964207</a>). Forms with glucose-6-phosphatase the complex responsible for glucose production through glycogenolysis and gluconeogenesis. Hence, it plays a central role in homeostatic regulation of blood glucose levels.

**Cellular Location**

Endoplasmic reticulum membrane; Multi-pass membrane protein

#### Tissue Location

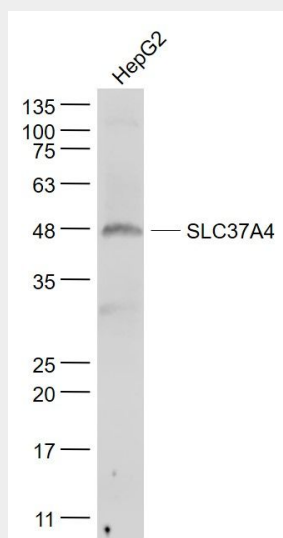
Mostly expressed in liver and kidney.

#### SLC37A4 Polyclonal Antibody - Protocols

Provided below are standard protocols that you may find useful for product applications.

- [Western Blot](#)
- [Blocking Peptides](#)
- [Dot Blot](#)
- [Immunohistochemistry](#)
- [Immunofluorescence](#)
- [Immunoprecipitation](#)
- [Flow Cytometry](#)
- [Cell Culture](#)

#### SLC37A4 Polyclonal Antibody - Images



#### Sample:

HepG2 (Human) Cell Lysate at 30 ug

Primary: Anti- SLC37A4 (bs-4039R) at 1/1000 dilution

Secondary: IRDye800CW Goat Anti-Rabbit IgG at 1/20000 dilution

Predicted band size: 46 kD

Observed band size: 48 kD