

CACH6/Cav2.3 Polyclonal Antibody
Purified Rabbit Polyclonal Antibody (Pab)
Catalog # AP58111

Specification

CACH6/Cav2.3 Polyclonal Antibody - Product Information

Application	FC
Primary Accession	Q15878
Reactivity	Rat, Pig, Dog, Bovine
Host	Rabbit
Clonality	Polyclonal
Calculated MW	261731

CACH6/Cav2.3 Polyclonal Antibody - Additional Information

Gene ID 777

Other Names

Voltage-dependent R-type calcium channel subunit alpha-1E, Brain calcium channel II, BII, Calcium channel, L type, alpha-1 polypeptide, isoform 6, Voltage-gated calcium channel subunit alpha Cav2.3, CACNA1E, CACH6, CACNL1A6

Format

0.01M TBS(pH7.4), 0.09% (W/V) sodium azide and 50% Glyce

Storage

Store at -20 °C for one year. Avoid repeated freeze/thaw cycles. When reconstituted in sterile pH 7.4 0.01M PBS or diluent of antibody the antibody is stable for at least two weeks at 2-4 °C.

CACH6/Cav2.3 Polyclonal Antibody - Protein Information

Name CACNA1E

Synonyms CACH6, CACNL1A6

Function

Voltage-sensitive calcium channels (VSCC) mediate the entry of calcium ions into excitable cells (PubMed:30343943). They are also involved in a variety of calcium-dependent processes, including muscle contraction, hormone or neurotransmitter release, gene expression, cell motility, cell division and cell death. The isoform alpha-1E gives rise to R-type calcium currents. R-type calcium channels belong to the 'high-voltage activated' (HVA) group and are blocked by nickel. They are however insensitive to dihydropyridines (DHP). Calcium channels containing alpha-1E subunit could be involved in the modulation of firing patterns of neurons which is important for information processing.

Cellular Location

Membrane; Multi-pass membrane protein.

Tissue Location

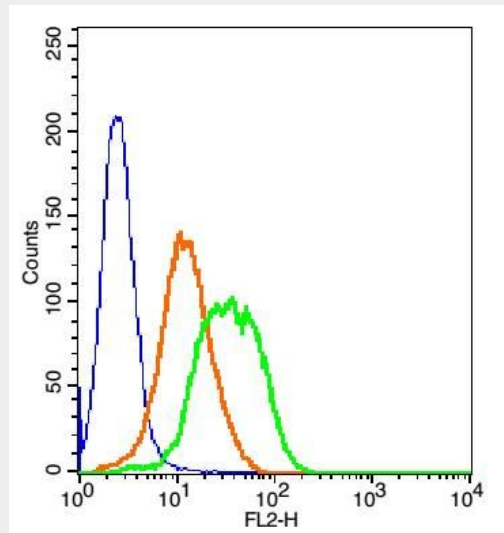
Expressed in neuronal tissues and in kidney.

CACH6/Cav2.3 Polyclonal Antibody - Protocols

Provided below are standard protocols that you may find useful for product applications.

- [Western Blot](#)
- [Blocking Peptides](#)
- [Dot Blot](#)
- [Immunohistochemistry](#)
- [Immunofluorescence](#)
- [Immunoprecipitation](#)
- [Flow Cytometry](#)
- [Cell Culture](#)

CACH6/Cav2.3 Polyclonal Antibody - Images



Blank control(blue): 293T(fixed with 2% paraformaldehyde (10 min) and then permeabilized with ice-cold 90% methanol for 30 min on ice).

Primary Antibody: Rabbit Anti-CACH6/PE Conjugated antibody (bs-3933R/PE), Dilution: 1 μ g in 100 μ L 1X PBS containing 0.5% BSA;

Isotype Control Antibody: Rabbit IgG/PE(orange) ,used under the same conditions.