

CHRDL2 Polyclonal Antibody
Purified Rabbit Polyclonal Antibody (Pab)
Catalog # AP58102**Specification**

CHRDL2 Polyclonal Antibody - Product Information

Application	WB
Primary Accession	O6WN34
Reactivity	Rat, Bovine
Host	Rabbit
Clonality	Polyclonal
Calculated MW	47495

CHRDL2 Polyclonal Antibody - Additional Information**Gene ID** 25884**Other Names**

Chordin-like protein 2, Breast tumor novel factor 1, BNF-1, Chordin-related protein 2, CHRDL2, BNF1, CHL2

Format

0.01M TBS(pH7.4), 0.09% (W/V) sodium azide and 50% Glyce

Storage

Store at -20 °C for one year. Avoid repeated freeze/thaw cycles. When reconstituted in sterile pH 7.4 0.01M PBS or diluent of antibody the antibody is stable for at least two weeks at 2-4 °C.

CHRDL2 Polyclonal Antibody - Protein Information**Name** CHRDL2**Synonyms** BNF1, CHL2**Function**

May inhibit BMPs activity by blocking their interaction with their receptors. Has a negative regulator effect on the cartilage formation/regeneration from immature mesenchymal cells, by preventing or reducing the rate of matrix accumulation (By similarity). Implicated in tumor angiogenesis. May play a role during myoblast and osteoblast differentiation, and maturation.

Cellular Location

[Isoform 1]: Secreted. [Isoform 3]: Cytoplasm. [Isoform 5]: Cytoplasm.

Tissue Location

Highly expressed in uterus. Moderately expressed in heart, liver, prostate, testis and ovary. Weakly expressed in skeletal muscle, kidney, spleen, small intestine and colon. Expressed in the secretory epithelial cells of uterine endometrium, fallopian tubes, endocervical glands, bladder and prostate, as well as the transitional epithelium of the urinary bladder, and in bone osteoblasts (at

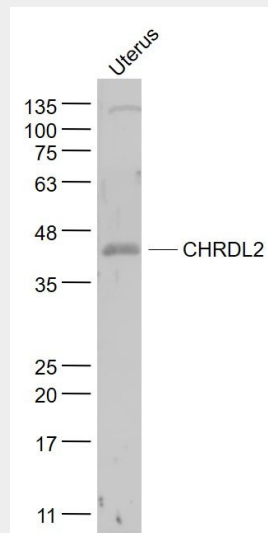
protein level). In normal cartilage, expression was confined in a few chondrocytes in the superficial zone as well as in the middle zone. In diseased cartilage coming from osteoarthritic patients, expression was limited to the middle zone of chondrocytes. Isoform 1 and isoform 2 are expressed in fetal cerebellum and heart, while only isoform 2 is detected in fetal spleen. Isoform 2 present in plasma

CHRDL2 Polyclonal Antibody - Protocols

Provided below are standard protocols that you may find useful for product applications.

- [Western Blot](#)
- [Blocking Peptides](#)
- [Dot Blot](#)
- [Immunohistochemistry](#)
- [Immunofluorescence](#)
- [Immunoprecipitation](#)
- [Flow Cytometry](#)
- [Cell Culture](#)

CHRDL2 Polyclonal Antibody - Images



Sample:

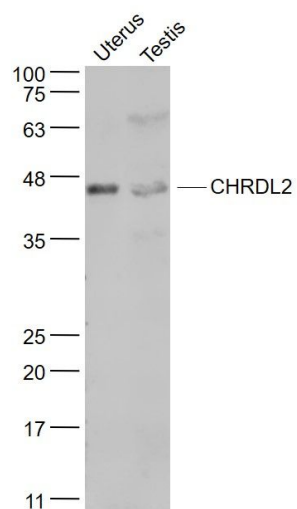
Uterus(Mouse) Lysate at 40 ug

Primary: Anti- CHRDL2 (bs-3860R) at 1/1000 dilution

Secondary: IRDye800CW Goat Anti-Rabbit IgG at 1/20000 dilution

Predicted band size: 45 kD

Observed band size: 45 kD

**Sample:**

Uterus (Rat) Lysate at 40 ug

Testis (Rat) Lysate at 40 ug

Primary: Anti- CHRDL2 (bs-3860R) at 1/1000 dilution

Secondary: IRDye800CW Goat Anti-Rabbit IgG at 1/20000 dilution

Predicted band size: 45 kD

Observed band size: 45 kD