

LDHC Polyclonal Antibody
Purified Rabbit Polyclonal Antibody (Pab)
Catalog # AP58095**Specification**

LDHC Polyclonal Antibody - Product Information

Application	WB
Primary Accession	P07864
Reactivity	Rat, Dog, Bovine
Host	Rabbit
Clonality	Polyclonal
Calculated MW	36311

LDHC Polyclonal Antibody - Additional Information**Gene ID** 3948**Other Names**

L-lactate dehydrogenase C chain, LDH-C, 1.1.1.27, Cancer/testis antigen 32, CT32, LDH testis subunit, LDH-X, LDHC, LDH3, LDHX

Format

0.01M TBS(pH7.4), 0.09% (W/V) sodium azide and 50% Glyce

Storage

Store at -20 °C for one year. Avoid repeated freeze/thaw cycles. When reconstituted in sterile pH 7.4 0.01M PBS or diluent of antibody the antibody is stable for at least two weeks at 2-4 °C.

LDHC Polyclonal Antibody - Protein Information**Name** LDHC**Synonyms** LDH3, LDHX**Function**

Possible role in sperm motility.

Cellular Location

Cytoplasm.

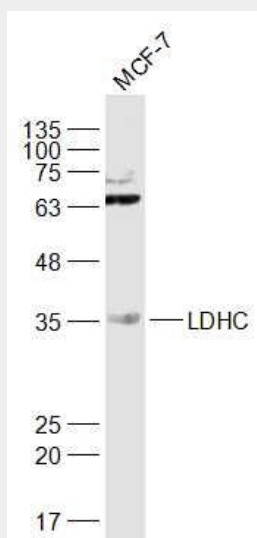
LDHC Polyclonal Antibody - Protocols

Provided below are standard protocols that you may find useful for product applications.

- [Western Blot](#)
- [Blocking Peptides](#)

- [Dot Blot](#)
- [Immunohistochemistry](#)
- [Immunofluorescence](#)
- [Immunoprecipitation](#)
- [Flow Cytometry](#)
- [Cell Culture](#)

LDHC Polyclonal Antibody - Images



Sample:

MCF-7(Human) Cell Lysate at 30 ug

Primary: Anti-LDHC (bs-3827R) at 1/1000 dilution

Secondary: IRDye800CW Goat Anti-Rabbit IgG at 1/20000 dilution

Predicted band size: 36 kD

Observed band size: 36 kD