

Brs3 Polyclonal Antibody
Purified Rabbit Polyclonal Antibody (Pab)
Catalog # AP58089**Specification**

Brs3 Polyclonal Antibody - Product Information

Application	WB
Primary Accession	P32247
Reactivity	Rat, Pig, Bovine
Host	Rabbit
Clonality	Polyclonal
Calculated MW	44411

Brs3 Polyclonal Antibody - Additional Information**Gene ID** 680**Other Names**

Bombesin receptor subtype-3, BRS-3, BRS3

Format

0.01M TBS(pH7.4), 0.09% (W/V) sodium azide and 50% Glyce

Storage

Store at -20 °C for one year. Avoid repeated freeze/thaw cycles. When reconstituted in sterile pH 7.4 0.01M PBS or diluent of antibody the antibody is stable for at least two weeks at 2-4 °C.

Brs3 Polyclonal Antibody - Protein Information**Name** BRS3**Function**

Role in sperm cell division, maturation, or function. This receptor mediates its action by association with G proteins that activate a phosphatidylinositol-calcium second messenger system.

Cellular Location

Cell membrane; Multi-pass membrane protein.

Tissue Location

In germ cells in testis. Lung carcinoma cells.

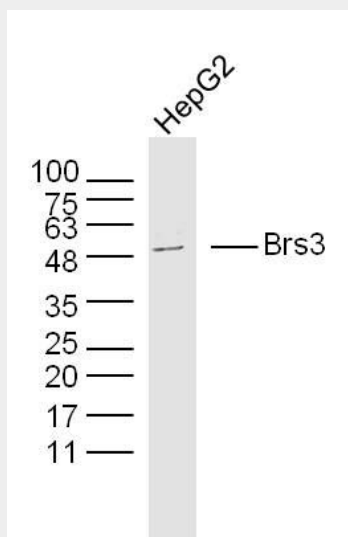
Brs3 Polyclonal Antibody - Protocols

Provided below are standard protocols that you may find useful for product applications.

- [Western Blot](#)

- [Blocking Peptides](#)
- [Dot Blot](#)
- [Immunohistochemistry](#)
- [Immunofluorescence](#)
- [Immunoprecipitation](#)
- [Flow Cytometry](#)
- [Cell Culture](#)

Brs3 Polyclonal Antibody - Images



Sample:

HepG2 Cell (Human) Lysate at 30 ug

Primary: Anti- Brs3 (bs-3668R) at 1/300 dilution

Secondary: IRDye800CW Goat Anti-Rabbit IgG at 1/20000 dilution

Predicted band size: 44 kD

Observed band size: 44 kD