

**SLC44A1 Polyclonal Antibody**  
**Purified Rabbit Polyclonal Antibody (Pab)**  
**Catalog # AP58088****Specification**

---

**SLC44A1 Polyclonal Antibody - Product Information**

Application	WB
Primary Accession	<a href="#">O8WWI5</a>
Reactivity	Rat, Pig, Dog, Bovine
Host	Rabbit
Clonality	Polyclonal
Calculated MW	73302

**SLC44A1 Polyclonal Antibody - Additional Information****Gene ID** 23446**Other Names**

Choline transporter-like protein 1, CDw92, Solute carrier family 44 member 1, CD92, SLC44A1, CD92, CDW92, CTL1

**Format**

0.01M TBS(pH7.4), 0.09% (W/V) sodium azide and 50% Glyce

**Storage**

Store at -20 °C for one year. Avoid repeated freeze/thaw cycles. When reconstituted in sterile pH 7.4 0.01M PBS or diluent of antibody the antibody is stable for at least two weeks at 2-4 °C.

**SLC44A1 Polyclonal Antibody - Protein Information****Name** SLC44A1 ([HGNC:18798](#))**Synonyms** CD92, CDW92, CTL1**Function**

Choline/H<sup>+</sup> antiporter (PubMed:[19357133](http://www.uniprot.org/citations/19357133), PubMed:[23651124](http://www.uniprot.org/citations/23651124), PubMed:[31855247](http://www.uniprot.org/citations/31855247), PubMed:[33789160](http://www.uniprot.org/citations/33789160)). Also acts as a high-affinity ethanolamine/H<sup>+</sup> antiporter, regulating the supply of extracellular ethanolamine (Etn) for the CDP-Etn pathway, redistribute intracellular Etn and balance the CDP-Cho and CDP-Etn arms of the Kennedy pathway (PubMed:[33789160](http://www.uniprot.org/citations/33789160)). Involved in membrane synthesis and myelin production (PubMed:[31855247](http://www.uniprot.org/citations/31855247)).

**Cellular Location**

Cell membrane; Multi-pass membrane protein. Mitochondrion outer membrane; Multi-pass

membrane protein

#### Tissue Location

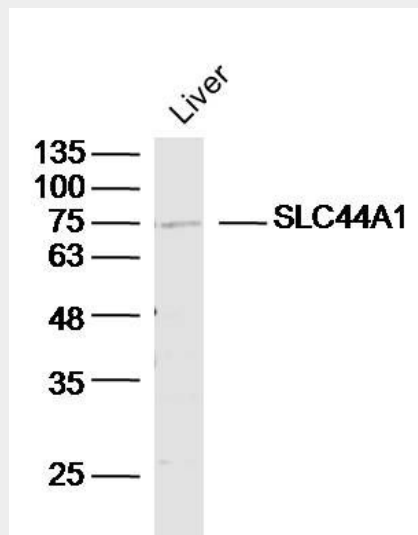
Expressed in various cells of the hematopoietic system.

#### SLC44A1 Polyclonal Antibody - Protocols

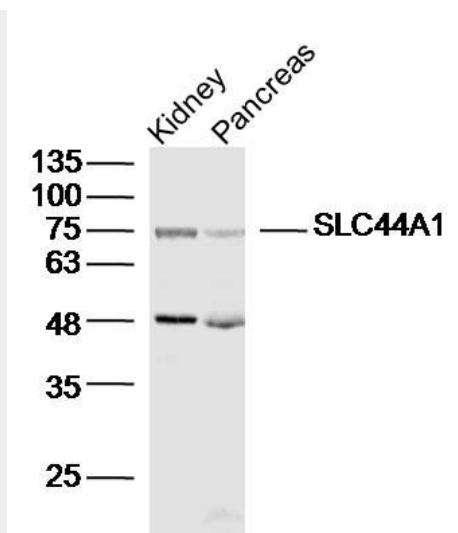
Provided below are standard protocols that you may find useful for product applications.

- [Western Blot](#)
- [Blocking Peptides](#)
- [Dot Blot](#)
- [Immunohistochemistry](#)
- [Immunofluorescence](#)
- [Immunoprecipitation](#)
- [Flow Cytometry](#)
- [Cell Culture](#)

#### SLC44A1 Polyclonal Antibody - Images



Sample: Liver (Mouse) Lysate at 40 ug  
Primary: Anti-SLC44A1(bs-3667R) at 1/300 dilution  
Secondary: IRDye800CW Goat Anti-Rabbit IgG at 1/20000 dilution  
Predicted band size: 73kD  
Observed band size: 75kD



**Sample:**

Kidney (Mouse) Lysate at 40 ug

Pancreas (Mouse) Lysate at 40 ug

Primary: Anti-SLC44A1(bs-3667R) at 1/300 dilution

Secondary: IRDye800CW Goat Anti-Rabbit IgG at 1/20000 dilution

Predicted band size: 73kD

Observed band size: 75kD