

CLEC2D Polyclonal Antibody
Purified Rabbit Polyclonal Antibody (Pab)
Catalog # AP58048

Specification

CLEC2D Polyclonal Antibody - Product Information

Application	FC
Primary Accession	O9UHP7
Reactivity	Rat, Pig, Dog
Host	Rabbit
Clonality	Polyclonal
Calculated MW	21849

CLEC2D Polyclonal Antibody - Additional Information

Gene ID 29121

Other Names

C-type lectin domain family 2 member D, Lectin-like NK cell receptor, Lectin-like transcript 1, LLT-1, Osteoclast inhibitory lectin, CLEC2D, CLAX, LLT1, OCIL

Format

0.01M TBS(pH7.4), 0.09% (W/V) sodium azide and 50% Glyce

Storage

Store at -20 °C for one year. Avoid repeated freeze/thaw cycles. When reconstituted in sterile pH 7.4 0.01M PBS or diluent of antibody the antibody is stable for at least two weeks at 2-4 °C.

CLEC2D Polyclonal Antibody - Protein Information

Name CLEC2D

Synonyms CLAX, LLT1, OCIL

Function

Receptor for KLRB1 that protects target cells against natural killer cell-mediated lysis (PubMed: [16339513](http://www.uniprot.org/citations/16339513), PubMed: [20843815](http://www.uniprot.org/citations/20843815)). Inhibits osteoclast formation (PubMed: [14753741](http://www.uniprot.org/citations/14753741), PubMed: [15123656](http://www.uniprot.org/citations/15123656)). Inhibits bone resorption (PubMed: [14753741](http://www.uniprot.org/citations/14753741)). Modulates the release of interferon-gamma (PubMed: [15104121](http://www.uniprot.org/citations/15104121)). Binds high molecular weight sulfated glycosaminoglycans (PubMed: [15123656](http://www.uniprot.org/citations/15123656)).

Cellular Location

Cell membrane; Single-pass type II membrane protein [Isoform 4]: Endoplasmic reticulum

Tissue Location

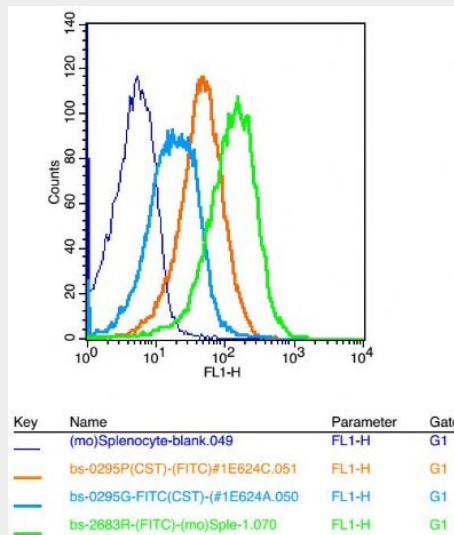
Detected in peripheral blood leukocytes, osteoblasts, lymph node, thymus and spleen. Isoform 1, isoform 2 and isoform 4 are expressed in T- and B-lymphocytes, and at lower levels in NK cells. They are also expressed in B-cell lines and LPS-matured monocyte-derived dendritic cells.

CLEC2D Polyclonal Antibody - Protocols

Provided below are standard protocols that you may find useful for product applications.

- [Western Blot](#)
- [Blocking Peptides](#)
- [Dot Blot](#)
- [Immunohistochemistry](#)
- [Immunofluorescence](#)
- [Immunoprecipitation](#)
- [Flow Cytometry](#)
- [Cell Culture](#)

CLEC2D Polyclonal Antibody - Images

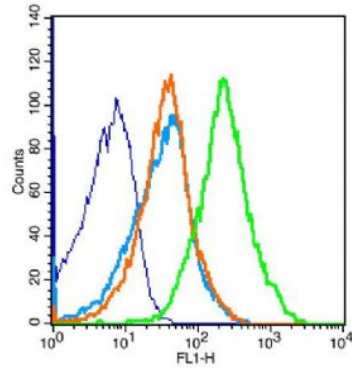


Positive control: (mo)Splenocytes(2% Paraformaldehyde-fixed)

Isotype Control Antibody: Rabbit IgG; Dilution: 1 µg in 100 µl 1 X PBS containing 0.5% BSA

Secondary Antibody: Goat anti-rabbit IgG-FITC; Dilution: 1:200 in 1 X PBS containing 0.5% BSA

Primary Antibody catalog number: bs-2683R; Dilution: 1 µg in 100 µl 1X PBS containing 0.5% BSA



Key	Name	Parameter	Gate
	(mo)Thymocyte-blank.039	FL1-H	G1
	bs-0295G-FITC-(mo)Th#1E6233.040	FL1-H	G1
	bs-0295P-FITC-(mo)#1E6234.041	FL1-H	G1
	bs-2683R-FITC-(mo)#1E623D.046	FL1-H	G1

Blank control: mouse thymouses(blue)

Isotype Control Antibody: Rabbit IgG(orange) ; Secondary Antibody: Goat anti-rabbit IgG-FITC(white blue), Dilution: 1:100 in 1 X PBS containing 0.5% BSA ; Primary Antibody Dilution: 1 μ l in 100 μ l 1X PBS containing 0.5% BSA(green).