

**B4GALT2 Polyclonal Antibody**  
**Purified Rabbit Polyclonal Antibody (Pab)**  
**Catalog # AP58011****Specification****B4GALT2 Polyclonal Antibody - Product Information**

Application	IHC-P
Primary Accession	<a href="#">O60909</a>
Reactivity	Rat, Pig, Dog, Bovine
Host	Rabbit
Clonality	Polyclonal
Calculated MW	41972

**B4GALT2 Polyclonal Antibody - Additional Information****Gene ID** 8704**Other Names**

Beta-1, 4-galactosyltransferase 2, Beta-1, 4-GalTase 2, Beta4Gal-T2, b4Gal-T2, 2.4.1.-, Beta-N-acetylglucosaminyl-glycolipid beta-1, 4-galactosyltransferase, Beta-N-acetylglucosaminylglycopeptide beta-1, 4-galactosyltransferase, 2.4.1.38, Lactose synthase A protein, 2.4.1.22, N-acetyllactosamine synthase, 2.4.1.90, Nal synthase, UDP-Gal:beta-GlcNAc beta-1, 4-galactosyltransferase 2, UDP-galactose:beta-N-acetylglucosamine beta-1, 4-galactosyltransferase 2, B4GALT2 ([HGNC:925](http://www.genenames.org/cgi-bin/gene_symbol_report?hgnc_id=925))

**Format**

0.01M TBS(pH7.4), 0.09% (W/V) sodium azide and 50% Glyce

**Storage**

Store at -20 °C for one year. Avoid repeated freeze/thaw cycles. When reconstituted in sterile pH 7.4 0.01M PBS or diluent of antibody the antibody is stable for at least two weeks at 2-4 °C.

**B4GALT2 Polyclonal Antibody - Protein Information****Name** B4GALT2 ([HGNC:925](#))**Function**

Responsible for the synthesis of complex-type N-linked oligosaccharides in many glycoproteins as well as the carbohydrate moieties of glycolipids (PubMed:[9405390](http://www.uniprot.org/citations/9405390)). Can produce lactose (PubMed:[9405390](http://www.uniprot.org/citations/9405390)).

**Cellular Location**

Golgi apparatus, Golgi stack membrane; Single-pass type II membrane protein. Note=Trans cisternae of Golgi stack

### Tissue Location

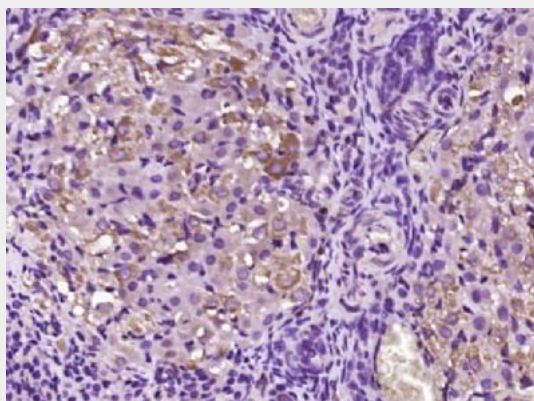
Weakly expressed in various tissues. Highest expression in prostate, testis, ovary, intestine, muscle, and in fetal brain.

### B4GALT2 Polyclonal Antibody - Protocols

Provided below are standard protocols that you may find useful for product applications.

- [Western Blot](#)
- [Blocking Peptides](#)
- [Dot Blot](#)
- [Immunohistochemistry](#)
- [Immunofluorescence](#)
- [Immunoprecipitation](#)
- [Flow Cytometry](#)
- [Cell Culture](#)

### B4GALT2 Polyclonal Antibody - Images



Paraformaldehyde-fixed, paraffin embedded (Rat ovary); Antigen retrieval by boiling in sodium citrate buffer (pH6.0) for 15min; Block endogenous peroxidase by 3% hydrogen peroxide for 20 minutes; Blocking buffer (normal goat serum) at 37°C for 30min; Antibody incubation with (B4GALT2) Polyclonal Antibody, Unconjugated (bs-23826R) at 1:400 overnight at 4°C, followed by operating according to SP Kit(Rabbit) (sp-0023) instructions and DAB staining.