

SRP68 Polyclonal Antibody
Purified Rabbit Polyclonal Antibody (Pab)
Catalog # AP58009

Specification

SRP68 Polyclonal Antibody - Product Information

Application	IHC-P
Primary Accession	O9UHB9
Reactivity	Rat, Dog, Bovine
Host	Rabbit
Clonality	Polyclonal
Calculated MW	70730

SRP68 Polyclonal Antibody - Additional Information

Gene ID 6730

Other Names

Signal recognition particle subunit SRP68, SRP68, Signal recognition particle 68 kDa protein, SRP68

Format

0.01M TBS(pH7.4), 0.09% (W/V) sodium azide and 50% Glyce

Storage

Store at -20 °C for one year. Avoid repeated freeze/thaw cycles. When reconstituted in sterile pH 7.4 0.01M PBS or diluent of antibody the antibody is stable for at least two weeks at 2-4 °C.

SRP68 Polyclonal Antibody - Protein Information

Name SRP68

Function

Component of the signal recognition particle (SRP) complex, a ribonucleoprotein complex that mediates the cotranslational targeting of secretory and membrane proteins to the endoplasmic reticulum (ER) (PubMed: <http://www.uniprot.org/citations/34020957> target="_blank">34020957). The SRP complex interacts with the signal sequence in nascent secretory and membrane proteins and directs them to the membrane of the ER (PubMed: <http://www.uniprot.org/citations/34020957> target="_blank">34020957). The SRP complex targets the ribosome-nascent chain complex to the SRP receptor (SR), which is anchored in the ER, where SR compaction and GTPase rearrangement drive cotranslational protein translocation into the ER (PubMed: <http://www.uniprot.org/citations/34020957> target="_blank">34020957). Binds the signal recognition particle RNA (7SL RNA), SRP72 binds to this complex subsequently (PubMed: <http://www.uniprot.org/citations/16672232> target="_blank">16672232, PubMed: <http://www.uniprot.org/citations/27899666> target="_blank">27899666). The SRP complex possibly participates in the elongation arrest function (By similarity).

Cellular Location

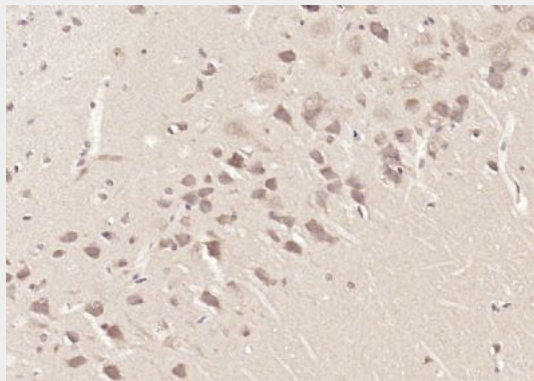
Cytoplasm. Nucleus, nucleolus. Endoplasmic reticulum

SRP68 Polyclonal Antibody - Protocols

Provided below are standard protocols that you may find useful for product applications.

- [Western Blot](#)
- [Blocking Peptides](#)
- [Dot Blot](#)
- [Immunohistochemistry](#)
- [Immunofluorescence](#)
- [Immunoprecipitation](#)
- [Flow Cytometry](#)
- [Cell Culture](#)

SRP68 Polyclonal Antibody - Images



Paraformaldehyde-fixed, paraffin embedded (rat brain); Antigen retrieval by boiling in sodium citrate buffer (pH6.0) for 15min; Block endogenous peroxidase by 3% hydrogen peroxide for 20 minutes; Blocking buffer (normal goat serum) at 37°C for 30min; Antibody incubation with (SRP68) Polyclonal Antibody, Unconjugated (bs-2381R) at 1:200 overnight at 4°C, followed by operating according to SP Kit(Rabbit) (sp-0023) instructions and DAB staining.