

CXCL10/IP10 Polyclonal Antibody
Purified Rabbit Polyclonal Antibody (Pab)
Catalog # AP57998**Specification**

CXCL10/IP10 Polyclonal Antibody - Product Information

Application	IHC-P
Primary Accession	P02778
Host	Rabbit
Clonality	Polyclonal
Calculated MW	10881

CXCL10/IP10 Polyclonal Antibody - Additional Information**Gene ID** 3627**Other Names**

C-X-C motif chemokine 10, 10 kDa interferon gamma-induced protein, Gamma-IP10, IP-10, Small-inducible cytokine B10, CXCL10(1-73), CXCL10, INP10, SCYB10

Format

0.01M TBS(pH7.4), 0.09% (W/V) sodium azide and 50% Glyce

Storage

Store at -20 °C for one year. Avoid repeated freeze/thaw cycles. When reconstituted in sterile pH 7.4 0.01M PBS or diluent of antibody the antibody is stable for at least two weeks at 2-4 °C.

CXCL10/IP10 Polyclonal Antibody - Protein Information**Name** CXCL10**Synonyms** INP10, SCYB10**Function**

Pro-inflammatory cytokine that is involved in a wide variety of processes such as chemotaxis, differentiation, and activation of peripheral immune cells, regulation of cell growth, apoptosis and modulation of angiostatic effects (PubMed: [11157474](http://www.uniprot.org/citations/11157474), PubMed: [22652417](http://www.uniprot.org/citations/22652417), PubMed: [7540647](http://www.uniprot.org/citations/7540647)). Plays thereby an important role during viral infections by stimulating the activation and migration of immune cells to the infected sites (By similarity). Mechanistically, binding of CXCL10 to the CXCR3 receptor activates G protein-mediated signaling and results in downstream activation of phospholipase C-dependent pathway, an increase in intracellular calcium production and actin reorganization (PubMed: [12750173](http://www.uniprot.org/citations/12750173), PubMed: [19151743](http://www.uniprot.org/citations/19151743)). In turn, recruitment of activated Th1 lymphocytes occurs at sites of inflammation (PubMed: [12663757](http://www.uniprot.org/citations/12663757), PubMed: [12663757](http://www.uniprot.org/citations/12663757)).

[12750173](http://www.uniprot.org/citations/12750173)). Activation of the CXCL10/CXCR3 axis also plays an important role in neurons in response to brain injury for activating microglia, the resident macrophage population of the central nervous system, and directing them to the lesion site. This recruitment is an essential element for neuronal reorganization (By similarity).

Cellular Location

Secreted.

Tissue Location

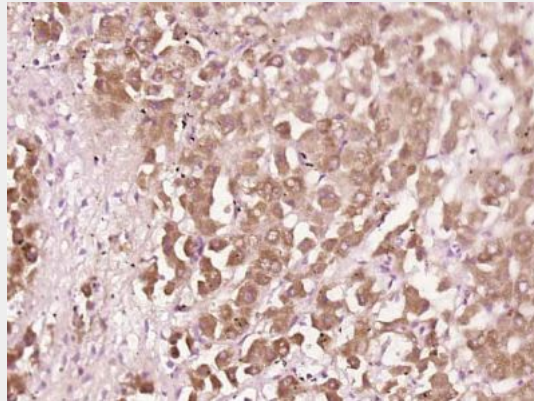
Mainly secreted by monocytes, endothelial cells as well as fibroblasts. Expressed by epithelial cells in thymus (PubMed:11157474). Microglial cells produce CXCL10 in response to viral stimulation (PubMed:12663757).

CXCL10/IP10 Polyclonal Antibody - Protocols

Provided below are standard protocols that you may find useful for product applications.

- [Western Blot](#)
- [Blocking Peptides](#)
- [Dot Blot](#)
- [Immunohistochemistry](#)
- [Immunofluorescence](#)
- [Immunoprecipitation](#)
- [Flow Cytometry](#)
- [Cell Culture](#)

CXCL10/IP10 Polyclonal Antibody - Images



Paraformaldehyde-fixed, paraffin embedded (Human liver cancer); Antigen retrieval by boiling in sodium citrate buffer (pH6.0) for 15min; Block endogenous peroxidase by 3% hydrogen peroxide for 20 minutes; Blocking buffer (normal goat serum) at 37°C for 30min; Antibody incubation with (CXCL10) Polyclonal Antibody, Unconjugated (bs-23238R) at 1:500 overnight at 4°C, followed by a conjugated secondary (sp-0023) for 20 minutes and DAB staining.