

**EDG8 Polyclonal Antibody**  
**Purified Rabbit Polyclonal Antibody (Pab)**  
**Catalog # AP57973****Specification**

---

**EDG8 Polyclonal Antibody - Product Information**

Application	IHC-P
Primary Accession	<a href="#">O9H228</a>
Reactivity	Rat, Pig, Dog
Host	Rabbit
Clonality	Polyclonal
Calculated MW	41775

**EDG8 Polyclonal Antibody - Additional Information****Gene ID** 53637**Other Names**

Sphingosine 1-phosphate receptor 5, S1P receptor 5, S1P5, Endothelial differentiation G-protein-coupled receptor 8, Sphingosine 1-phosphate receptor Edg-8, S1P receptor Edg-8, S1PR5, EDG8

**Format**

0.01M TBS(pH7.4), 0.09% (W/V) sodium azide and 50% Glyce

**Storage**

Store at -20 °C for one year. Avoid repeated freeze/thaw cycles. When reconstituted in sterile pH 7.4 0.01M PBS or diluent of antibody the antibody is stable for at least two weeks at 2-4 °C.

**EDG8 Polyclonal Antibody - Protein Information****Name** S1PR5**Synonyms** EDG8**Function**

Receptor for the lysosphingolipid sphingosine 1-phosphate (S1P). S1P is a bioactive lysophospholipid that elicits diverse physiological effect on most types of cells and tissues. Is coupled to both the G(i/o)alpha and G(12) subclass of heteromeric G-proteins (By similarity). May play a regulatory role in the transformation of radial glial cells into astrocytes and may affect proliferative activity of these cells.

**Cellular Location**

Cell membrane; Multi-pass membrane protein.

**Tissue Location**

Widely expressed in the brain, most prominently in the corpus callosum, which is predominantly white matter. Detected in spleen, peripheral blood leukocytes, placenta, lung, aorta and fetal

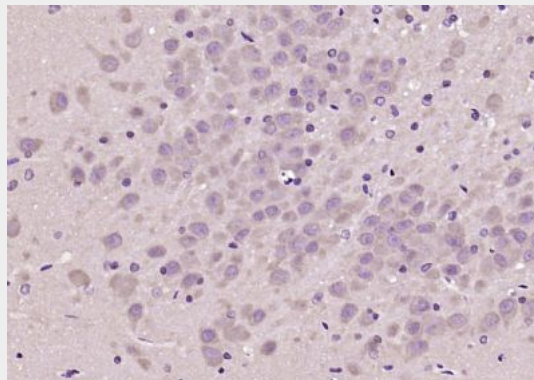
spleen. Low-level signal detected in many tissue extracts Overexpressed in leukemic large granular lymphocytes. Isoform 1 is predominantly expressed in peripheral tissues. Isoform 2 is expressed in brain, spleen and peripheral blood leukocytes

### EDG8 Polyclonal Antibody - Protocols

Provided below are standard protocols that you may find useful for product applications.

- [Western Blot](#)
- [Blocking Peptides](#)
- [Dot Blot](#)
- [Immunohistochemistry](#)
- [Immunofluorescence](#)
- [Immunoprecipitation](#)
- [Flow Cytometry](#)
- [Cell Culture](#)

### EDG8 Polyclonal Antibody - Images



Paraformaldehyde-fixed, paraffin embedded (rat brain); Antigen retrieval by boiling in sodium citrate buffer (pH6.0) for 15min; Block endogenous peroxidase by 3% hydrogen peroxide for 20 minutes; Blocking buffer (normal goat serum) at 37°C for 30min; Antibody incubation with (EDG8) Polyclonal Antibody, Unconjugated (bs-21807R) at 1:200 overnight at 4°C, followed by operating according to SP Kit(Rabbit) (sp-0023) instructions and DAB staining.