

SLC16A9 Polyclonal Antibody
Purified Rabbit Polyclonal Antibody (Pab)
Catalog # AP57922

Specification

SLC16A9 Polyclonal Antibody - Product Information

Application	WB
Primary Accession	O7RTY1
Reactivity	Rat, Pig, Dog, Bovine
Host	Rabbit
Clonality	Polyclonal
Calculated MW	55794

SLC16A9 Polyclonal Antibody - Additional Information

Gene ID 220963

Other Names

Monocarboxylate transporter 9, MCT 9, Solute carrier family 16 member 9, SLC16A9, C10orf36, MCT9

Format

0.01M TBS(pH7.4), 0.09% (W/V) sodium azide and 50% Glycerol

Storage

Store at -20 °C for one year. Avoid repeated freeze/thaw cycles. When reconstituted in sterile pH 7.4 0.01M PBS or diluent of antibody the antibody is stable for at least two weeks at 2-4 °C.

SLC16A9 Polyclonal Antibody - Protein Information

Name SLC16A9 ([HGNC:23520](#))

Synonyms C10orf36, MCT9

Function

Extracellular pH-and Na(+)-sensitive low-affinity creatine transporter (PubMed:[31784090](http://www.uniprot.org/citations/31784090)). Functions also as a pH-independent carnitine efflux transporter (PubMed:[21886157](http://www.uniprot.org/citations/21886157)).

Cellular Location

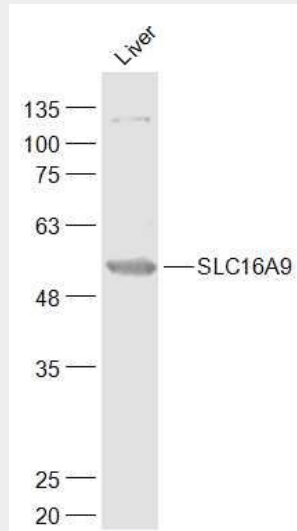
Cell membrane; Multi-pass membrane protein

SLC16A9 Polyclonal Antibody - Protocols

Provided below are standard protocols that you may find useful for product applications.

- [Western Blot](#)
- [Blocking Peptides](#)
- [Dot Blot](#)
- [Immunohistochemistry](#)
- [Immunofluorescence](#)
- [Immunoprecipitation](#)
- [Flow Cytometry](#)
- [Cell Culture](#)

SLC16A9 Polyclonal Antibody - Images



Sample:

Liver (Mouse) Lysate at 40 ug

Primary: Anti-SLC16A9 (bs-21200R) at 1/1000 dilution

Secondary: IRDye800CW Goat Anti-Rabbit IgG at 1/20000 dilution

Predicted band size: 56 kD

Observed band size: 56 kD