

RAD21L1 Polyclonal Antibody
Purified Rabbit Polyclonal Antibody (Pab)
Catalog # AP57896**Specification**

RAD21L1 Polyclonal Antibody - Product Information

Application	IHC-P
Primary Accession	O9H4I0
Reactivity	Rat
Host	Rabbit
Clonality	Polyclonal
Calculated MW	63324

RAD21L1 Polyclonal Antibody - Additional Information**Gene ID** 642636**Other Names**

Double-strand-break repair protein rad21-like protein 1, RAD21L1, RAD21L

Format

0.01M TBS(pH7.4), 0.09% (W/V) sodium azide and 50% Glyce

Storage

Store at -20 °C for one year. Avoid repeated freeze/thaw cycles. When reconstituted in sterile pH 7.4 0.01M PBS or diluent of antibody the antibody is stable for at least two weeks at 2-4 °C.

RAD21L1 Polyclonal Antibody - Protein Information**Name** RAD21L1**Synonyms** RAD21L**Function**

Meiosis-specific component of some cohesin complex required during the initial steps of prophase I in male meiosis. Probably required during early meiosis in males for separation of sister chromatids and homologous chromosomes. Replaces RAD21 in premeiotic S phase (during early stages of prophase I), while RAD21 reappears in later stages of prophase I. Involved in synaptonemal complex assembly, synapsis initiation and crossover recombination between homologous chromosomes during prophase I (By similarity).

Cellular Location

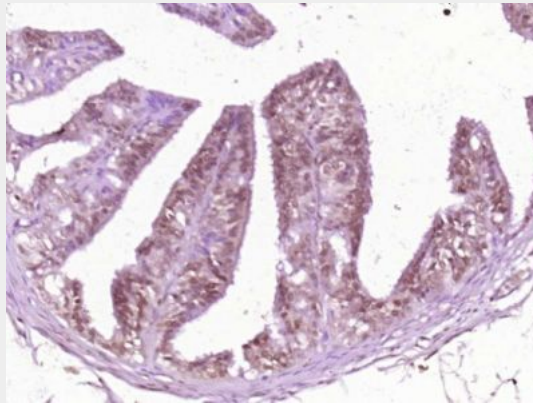
Nucleus {ECO:0000250|UniProtKB:A2AU37}. Chromosome {ECO:0000250|UniProtKB:A2AU37}. Note=In meiotic chromosomes, localized along axial elements in early meiosis: detectable on the axial elements in leptotene, and stays on the axial/lateral elements until mid pachytene. It then disappears and is replaced with RAD21 Compared to REC8, has mutually exclusive loading sites on the chromosomes: REC8 and RAD21L form distinct cohesin-enriched domains along the axial elements. {ECO:0000250|UniProtKB:A2AU37}

RAD21L1 Polyclonal Antibody - Protocols

Provided below are standard protocols that you may find useful for product applications.

- [Western Blot](#)
- [Blocking Peptides](#)
- [Dot Blot](#)
- [Immunohistochemistry](#)
- [Immunofluorescence](#)
- [Immunoprecipitation](#)
- [Flow Cytometry](#)
- [Cell Culture](#)

RAD21L1 Polyclonal Antibody - Images



Paraformaldehyde-fixed, paraffin embedded (Rat ovary); Antigen retrieval by boiling in sodium citrate buffer (pH6.0) for 15min; Block endogenous peroxidase by 3% hydrogen peroxide for 20 minutes; Blocking buffer (normal goat serum) at 37°C for 30min; Antibody incubation with (RAD21L1) Polyclonal Antibody, Unconjugated (bs-21139R) at 1:400 overnight at 4°C, followed by operating according to SP Kit(Rabbit) (sp-0023) instructions and DAB staining.