

**PRCC/Papillary renal cell carcinoma Polyclonal Antibody**  
**Purified Rabbit Polyclonal Antibody (Pab)**  
**Catalog # AP57856**

**Specification**

---

**PRCC/Papillary renal cell carcinoma Polyclonal Antibody - Product Information**

|                   |                        |
|-------------------|------------------------|
| Application       | IHC-P, WB              |
| Primary Accession | <a href="#">O92733</a> |
| Reactivity        | Rat, Pig, Bovine       |
| Host              | Rabbit                 |
| Clonality         | Polyclonal             |
| Calculated MW     | 52418                  |

**PRCC/Papillary renal cell carcinoma Polyclonal Antibody - Additional Information**

**Gene ID** 5546

**Other Names**

Proline-rich protein PRCC, Papillary renal cell carcinoma translocation-associated gene protein, PRCC, TPRC

**Format**

0.01M TBS(pH7.4), 0.09% (W/V) sodium azide and 50% Glyce

**Storage**

Store at -20 °C for one year. Avoid repeated freeze/thaw cycles. When reconstituted in sterile pH 7.4 0.01M PBS or diluent of antibody the antibody is stable for at least two weeks at 2-4 °C.

**PRCC/Papillary renal cell carcinoma Polyclonal Antibody - Protein Information**

**Name** PRCC

**Synonyms** TPRC

**Function**

May regulate cell cycle progression through interaction with MAD2L2.

**Cellular Location**

Nucleus.

**Tissue Location**

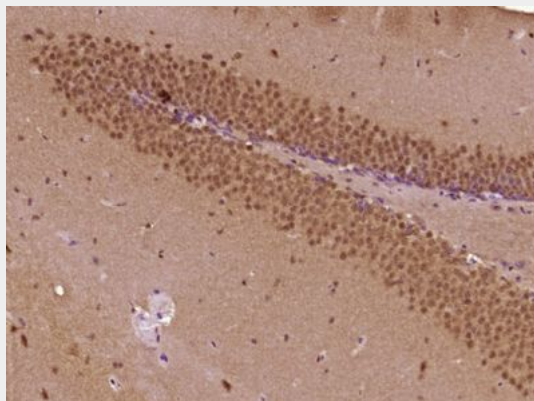
Ubiquitous in fetal and adult tissues.

**PRCC/Papillary renal cell carcinoma Polyclonal Antibody - Protocols**

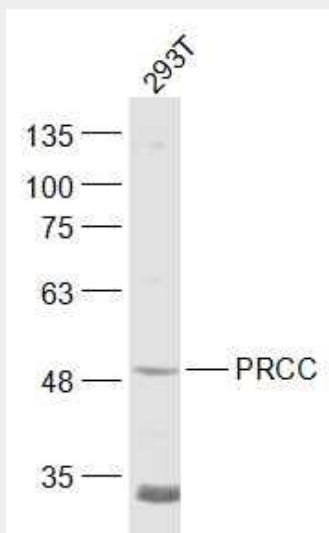
Provided below are standard protocols that you may find useful for product applications.

- [Western Blot](#)
- [Blocking Peptides](#)
- [Dot Blot](#)
- [Immunohistochemistry](#)
- [Immunofluorescence](#)
- [Immunoprecipitation](#)
- [Flow Cytometry](#)
- [Cell Culture](#)

### PRCC/Papillary renal cell carcinoma Polyclonal Antibody - Images



Paraformaldehyde-fixed, paraffin embedded (Mouse brain); Antigen retrieval by boiling in sodium citrate buffer (pH6.0) for 15min; Block endogenous peroxidase by 3% hydrogen peroxide for 20 minutes; Blocking buffer (normal goat serum) at 37°C for 30min; Antibody incubation with (PRCC/Papillary renal cell carcinoma) Polyclonal Antibody, Unconjugated (bs-21077R) at 1:400 overnight at 4°C, followed by operating according to SP Kit(Rabbit) (sp-0023) instructions and DAB staining.



#### Sample:

293T(Human) Cell Lysate at 30 ug

Primary: Anti-PRCC (bs-21077R) at 1/1000 dilution

Secondary: IRDye800CW Goat Anti-Rabbit IgG at 1/20000 dilution

Predicted band size: 52 kD

Observed band size: 52 kD