

PAPD4 Polyclonal Antibody
Purified Rabbit Polyclonal Antibody (Pab)
Catalog # AP57855

Specification

PAPD4 Polyclonal Antibody - Product Information

Application	IHC-P
Primary Accession	Q6PIY7
Reactivity	Rat, Pig, Dog, Bovine
Host	Rabbit
Clonality	Polyclonal
Calculated MW	56028

PAPD4 Polyclonal Antibody - Additional Information

Gene ID 167153

Other Names

Poly(A) RNA polymerase GLD2, hGLD-2, 2.7.7.19, PAP-associated domain-containing protein 4, Terminal nucleotidyltransferase 2 {ECO:0000312|HGNC:HGNC:26776}, Terminal uridylyltransferase 2, TUTase 2, TENT2 ([HGNC:26776](http://www.genenames.org/cgi-bin/gene_symbol_report?hgnc_id=26776))

Format

0.01M TBS(pH7.4), 0.09% (W/V) sodium azide and 50% Glycerol

Storage

Store at -20 °C for one year. Avoid repeated freeze/thaw cycles. When reconstituted in sterile pH 7.4 0.01M PBS or diluent of antibody the antibody is stable for at least two weeks at 2-4 °C.

PAPD4 Polyclonal Antibody - Protein Information

Name TENT2 ([HGNC:26776](#))

Function

Cytoplasmic poly(A) RNA polymerase that adds successive AMP monomers to the 3'-end of specific RNAs, forming a poly(A) tail (PubMed: [15070731](http://www.uniprot.org/citations/15070731), PubMed: [31792053](http://www.uniprot.org/citations/31792053)). In contrast to the canonical nuclear poly(A) RNA polymerase, it only adds poly(A) to selected cytoplasmic mRNAs (PubMed: [15070731](http://www.uniprot.org/citations/15070731)). Does not play a role in replication-dependent histone mRNA degradation (PubMed: [18172165](http://www.uniprot.org/citations/18172165)). Adds a single nucleotide to the 3' end of specific miRNAs, monoadenylation stabilizes and prolongs the activity of some but not all miRNAs (PubMed: [23200856](http://www.uniprot.org/citations/23200856), PubMed: [31792053](http://www.uniprot.org/citations/31792053)).

Cellular Location

Cytoplasm {ECO:0000250|UniProtKB:Q91YI6}. Nucleus {ECO:0000250|UniProtKB:Q91YI6}

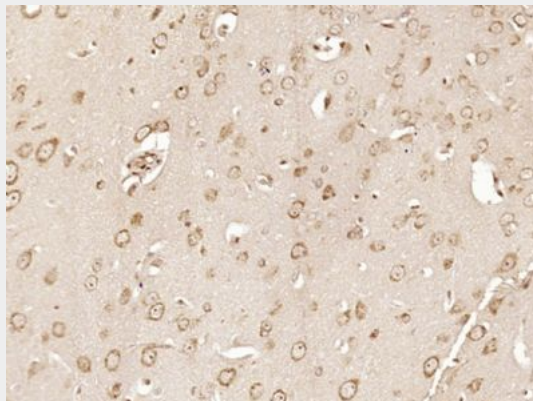
Tissue Location

Expressed in brain. Within brain, it is expressed in cerebellum, hippocampus and medulla.

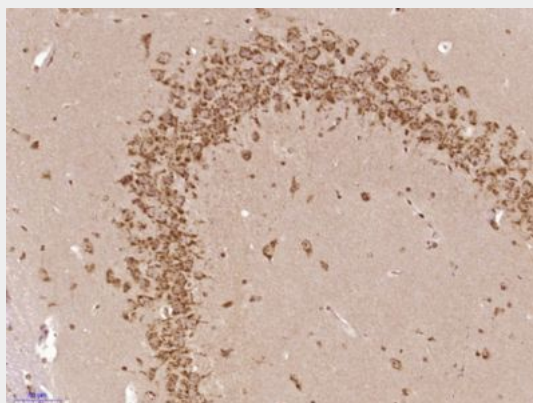
PAPD4 Polyclonal Antibody - Protocols

Provided below are standard protocols that you may find useful for product applications.

- [Western Blot](#)
- [Blocking Peptides](#)
- [Dot Blot](#)
- [Immunohistochemistry](#)
- [Immunofluorescence](#)
- [Immunoprecipitation](#)
- [Flow Cytometry](#)
- [Cell Culture](#)

PAPD4 Polyclonal Antibody - Images

Paraformaldehyde-fixed, paraffin embedded (Rat brain); Antigen retrieval by boiling in sodium citrate buffer (pH6.0) for 15min; Block endogenous peroxidase by 3% hydrogen peroxide for 20 minutes; Blocking buffer (normal goat serum) at 37°C for 30min; Antibody incubation with (PAPD4) Polyclonal Antibody, Unconjugated (bs-21076R) at 1:400 overnight at 4°C, followed by operating according to SP Kit(Rabbit) (sp-0023) instructions and DAB staining.



Paraformaldehyde-fixed, paraffin embedded (Mouse brain); Antigen retrieval by boiling in sodium

citrate buffer (pH6.0) for 15min; Block endogenous peroxidase by 3% hydrogen peroxide for 20 minutes; Blocking buffer (normal goat serum) at 37°C for 30min; Antibody incubation with (PAPD4) Polyclonal Antibody, Unconjugated (bs-21076R) at 1:400 overnight at 4°C, followed by operating according to SP Kit(Rabbit) (sp-0023) instructions and DAB staining.