

PPEF1 Polyclonal Antibody
Purified Rabbit Polyclonal Antibody (Pab)
Catalog # AP57846

Specification

PPEF1 Polyclonal Antibody - Product Information

| | |
|-------------------|------------------------|
| Application | IHC-P |
| Primary Accession | O14829 |
| Host | Rabbit |
| Clonality | Polyclonal |
| Calculated MW | 75792 |

PPEF1 Polyclonal Antibody - Additional Information

Gene ID 5475

Other Names

Serine/threonine-protein phosphatase with EF-hands 1, PPEF-1, 3.1.3.16, Protein phosphatase with EF calcium-binding domain, PPEF, Serine/threonine-protein phosphatase 7, PP7, PPEF1, PPEF, PPP7C

Format

0.01M TBS(pH7.4), 0.09% (W/V) sodium azide and 50% Glyce

Storage

Store at -20 °C for one year. Avoid repeated freeze/thaw cycles. When reconstituted in sterile pH 7.4 0.01M PBS or diluent of antibody the antibody is stable for at least two weeks at 2-4 °C.

PPEF1 Polyclonal Antibody - Protein Information

Name PPEF1

Synonyms PPEF, PPP7C

Function

May have a role in the recovery or adaptation response of photoreceptors. May have a role in development.

Tissue Location

Detected in retina and retinal derived Y-79 retinoblastoma cells. Also found in fetal brain

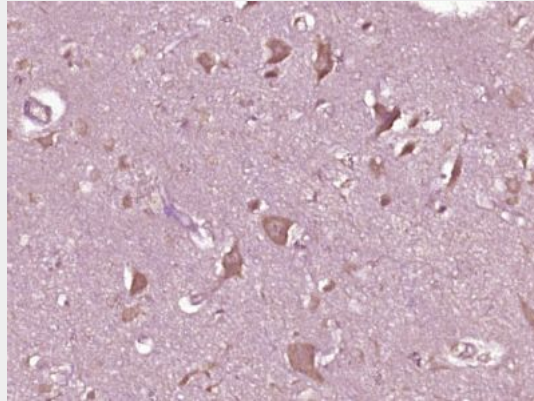
PPEF1 Polyclonal Antibody - Protocols

Provided below are standard protocols that you may find useful for product applications.

- [Western Blot](#)

- [Blocking Peptides](#)
- [Dot Blot](#)
- [Immunohistochemistry](#)
- [Immunofluorescence](#)
- [Immunoprecipitation](#)
- [Flow Cytometry](#)
- [Cell Culture](#)

PPEF1 Polyclonal Antibody - Images



Paraformaldehyde-fixed, paraffin embedded (human brain glioma); Antigen retrieval by boiling in sodium citrate buffer (pH6.0) for 15min; Block endogenous peroxidase by 3% hydrogen peroxide for 20 minutes; Blocking buffer (normal goat serum) at 37°C for 30min; Antibody incubation with (PPEF1) Polyclonal Antibody, Unconjugated (bs-21055R) at 1:400 overnight at 4°C, followed by operating according to SP Kit(Rabbit) (sp-0023) instructions and DAB staining.