

**ARP1B/PC3 Polyclonal Antibody**  
**Purified Rabbit Polyclonal Antibody (Pab)**  
**Catalog # AP57707**

## Specification

---

### ARP1B/PC3 Polyclonal Antibody - Product Information

Application	WB
Primary Accession	<a href="#">P42025</a>
Reactivity	Pig, Dog, Bovine
Host	Rabbit
Clonality	Polyclonal
Calculated MW	42293

### ARP1B/PC3 Polyclonal Antibody - Additional Information

**Gene ID** 10120

#### Other Names

Beta-centractin, Actin-related protein 1B, ARP1B, ACTR1B, CTRN2

#### Format

0.01M TBS(pH7.4), 0.09% (W/V) sodium azide and 50% Glyce

#### Storage

Store at -20 °C for one year. Avoid repeated freeze/thaw cycles. When reconstituted in sterile pH 7.4 0.01M PBS or diluent of antibody the antibody is stable for at least two weeks at 2-4 °C.

### ARP1B/PC3 Polyclonal Antibody - Protein Information

**Name** ACTR1B

**Synonyms** CTRN2

#### Function

Component of a multi-subunit complex involved in microtubule based vesicle motility. It is associated with the centrosome.

#### Cellular Location

Cytoplasm, cytoskeleton. Cytoplasm, cytoskeleton, microtubule organizing center, centrosome

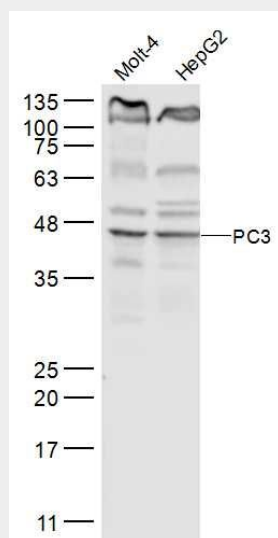
### ARP1B/PC3 Polyclonal Antibody - Protocols

Provided below are standard protocols that you may find useful for product applications.

- [Western Blot](#)
- [Blocking Peptides](#)

- [Dot Blot](#)
- [Immunohistochemistry](#)
- [Immunofluorescence](#)
- [Immunoprecipitation](#)
- [Flow Cytometry](#)
- [Cell Culture](#)

#### ARP1B/PC3 Polyclonal Antibody - Images



#### Sample:

Molt-4(Human) Cell Lysate at 30 ug

HepG2(Human) Cell Lysate at 30 ug

Primary: Anti-PC3 (bs-19902R) at 1/300 dilution

Secondary: IRDye800CW Goat Anti-Rabbit IgG at 1/20000 dilution

Predicted band size: 42 kD

Observed band size: 42 kD