

**PASD1/CT63 Polyclonal Antibody**  
**Purified Rabbit Polyclonal Antibody (Pab)**  
**Catalog # AP57703**

### Specification

---

#### PASD1/CT63 Polyclonal Antibody - Product Information

Application	WB
Primary Accession	<a href="#">Q8IV76</a>
Host	Rabbit
Clonality	Polyclonal
Calculated MW	87428

#### PASD1/CT63 Polyclonal Antibody - Additional Information

Gene ID 139135

#### Other Names

Circadian clock protein PASD1, Cancer/testis antigen 63, CT63, OX-TES-1, PAS domain-containing protein 1 {ECO:0000303|PubMed:15162151, ECO:0000312|HGNC:HGNC:20686}, PASD1 ([HGNC:20686](http://www.genenames.org/cgi-bin/gene_symbol_report?hgnc_id=20686))

#### Format

0.01M TBS(pH7.4), 0.09% (W/V) sodium azide and 50% Glyce

#### Storage

Store at -20 °C for one year. Avoid repeated freeze/thaw cycles. When reconstituted in sterile pH 7.4 0.01M PBS or diluent of antibody the antibody is stable for at least two weeks at 2-4 °C.

#### PASD1/CT63 Polyclonal Antibody - Protein Information

Name PASD1 ([HGNC:20686](#))

#### Function

Functions as a suppressor of the biological clock that drives the daily circadian rhythms of cells throughout the body (PubMed:[25936801](http://www.uniprot.org/citations/25936801)). Acts as a nuclear repressor of the CLOCK-BMAL1 heterodimer-mediated transcriptional activation of the core clock components (PubMed:[25936801](http://www.uniprot.org/citations/25936801)). Inhibits circadian clock function in cancer cells, when overexpressed (PubMed:[25936801](http://www.uniprot.org/citations/25936801)).

#### Cellular Location

[Isoform 1]: Nucleus. Note=Associates preferentially at the periphery of the nucleus with heterochromatin (PubMed:25936801)

#### Tissue Location

Testis-specific (PubMed:25936801). Expressed in a broad range of cancer cells, including

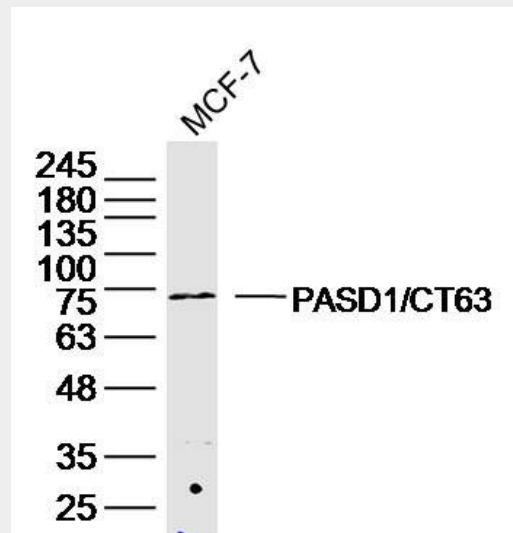
melanoma, lung cancer, and breast cancer (at protein level). Testis-specific (PubMed:15162151) Found in histologically normal tissues from patients with uterus, lung and small intestine cancers. Widespread expression seen in solid tumors and diffuse large B-cell lymphoma (DLBCL)-derived cell lines. Isoform 2 is expressed in all DLBCL-derived cell lines, while isoform 1 is preferentially expressed in cell lines derived from non-germinal center DLBCL (PubMed:15162151).

### PASD1/CT63 Polyclonal Antibody - Protocols

Provided below are standard protocols that you may find useful for product applications.

- [Western Blot](#)
- [Blocking Peptides](#)
- [Dot Blot](#)
- [Immunohistochemistry](#)
- [Immunofluorescence](#)
- [Immunoprecipitation](#)
- [Flow Cytometry](#)
- [Cell Culture](#)

### PASD1/CT63 Polyclonal Antibody - Images



Sample: MCF-7 Cell (Human) Lysate at 40 ug  
Primary: Anti-PASD1/CT63 (bs-19895R) at 1/300 dilution  
Secondary: IRDye800CW Goat Anti-Rabbit IgG at 1/20000 dilution  
Predicted band size: 70 kD  
Observed band size: 73 kD