

**PSMA8 Polyclonal Antibody**  
**Purified Rabbit Polyclonal Antibody (Pab)**  
**Catalog # AP57530**

## Specification

---

### PSMA8 Polyclonal Antibody - Product Information

Application	WB, IHC-P
Primary Accession	<a href="#">Q8TAA3</a>
Reactivity	Rat, Pig, Cynomolgus, Dog, Bovine
Host	Rabbit
Clonality	Polyclonal
Calculated MW	28530

### PSMA8 Polyclonal Antibody - Additional Information

Gene ID 143471

#### Other Names

Proteasome subunit alpha-type 8, Proteasome alpha 4 subunit, Proteasome subunit alpha-type 7-like, PSMA8, PSMA7L

#### Format

0.01M TBS(pH7.4), 0.09% (W/V) sodium azide and 50% Glyce

#### Storage

Store at -20 °C for one year. Avoid repeated freeze/thaw cycles. When reconstituted in sterile pH 7.4 0.01M PBS or diluent of antibody the antibody is stable for at least two weeks at 2-4 °C.

### PSMA8 Polyclonal Antibody - Protein Information

Name PSMA8

Synonyms PSMA7L

#### Function

Component of the spermatoproteasome, a proteasome specifically found in testis that promotes acetylation-dependent degradation of histones, thereby participating actively to the exchange of histones during spermatogenesis. The proteasome is a protein complex that degrades unneeded or damaged proteins by proteolysis, a chemical reaction that breaks peptide bonds. Required for 20S core proteasome assembly, essential for the degradation of meiotic proteins RAD51 and RPA1 at late prophase I and the progression of meiosis I during spermatogenesis. Localizes to the synaptonemal complex, a 'zipper'-like structure that holds homologous chromosome pairs in synapsis during meiotic prophase I.

#### Cellular Location

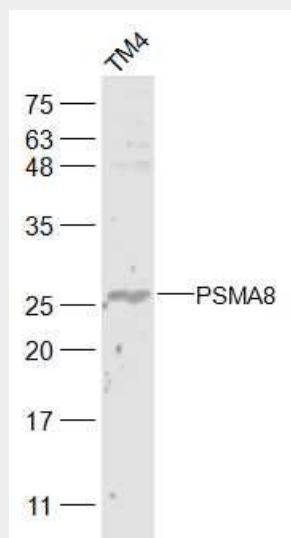
Nucleus {ECO:0000250|UniProtKB:Q9CWH6}. Note=Localizes to the central region of the synaptonemal complex {ECO:0000250|UniProtKB:Q9CWH6}

## PSMA8 Polyclonal Antibody - Protocols

Provided below are standard protocols that you may find useful for product applications.

- [Western Blot](#)
- [Blocking Peptides](#)
- [Dot Blot](#)
- [Immunohistochemistry](#)
- [Immunofluorescence](#)
- [Immunoprecipitation](#)
- [Flow Cytometry](#)
- [Cell Culture](#)

## PSMA8 Polyclonal Antibody - Images



### Sample:

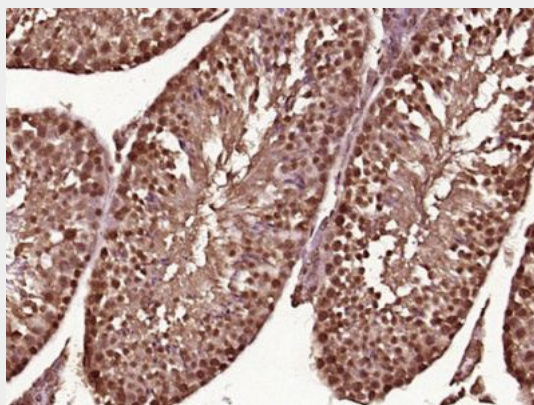
TM4(Mouse) Cell Lysate at 30 ug

Primary: Anti-PSMA8 (bs-19461R) at 1/300 dilution

Secondary: IRDye800CW Goat Anti-Rabbit IgG at 1/20000 dilution

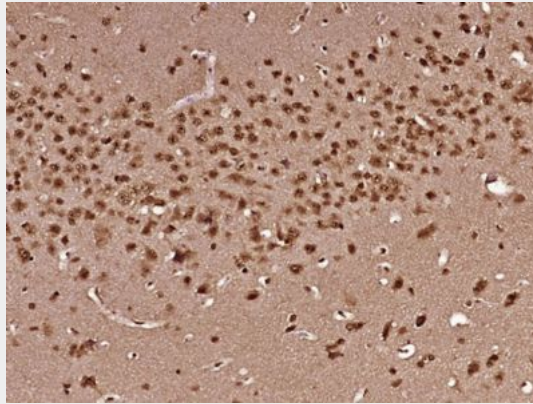
Predicted band size: 29 kD

Observed band size: 29 kD



Paraformaldehyde-fixed, paraffin embedded (Mouse testis); Antigen retrieval by boiling in sodium

citrate buffer (pH6.0) for 15min; Block endogenous peroxidase by 3% hydrogen peroxide for 20 minutes; Blocking buffer (normal goat serum) at 37°C for 30min; Antibody incubation with (PSMA8) Polyclonal Antibody, Unconjugated (bs-19461R) at 1:400 overnight at 4°C, followed by operating according to SP Kit(Rabbit) (sp-0023) instructions and DAB staining.



Paraformaldehyde-fixed, paraffin embedded (Mouse brain); Antigen retrieval by boiling in sodium citrate buffer (pH6.0) for 15min; Block endogenous peroxidase by 3% hydrogen peroxide for 20 minutes; Blocking buffer (normal goat serum) at 37°C for 30min; Antibody incubation with (PSMA8) Polyclonal Antibody, Unconjugated (bs-19461R) at 1:400 overnight at 4°C, followed by operating according to SP Kit(Rabbit) (sp-0023) instructions and DAB staining.