

**TUBB3 Antibody (N-term)**  
**Affinity Purified Rabbit Polyclonal Antibody (Pab)**  
**Catalog # AP5752A**

**Specification**

---

**TUBB3 Antibody (N-term) - Product Information**

Application	WB, IHC-P, FC,E
Primary Accession	<a href="#">Q13509</a>
Other Accession	<a href="#">P09652</a> , <a href="#">Q4ORB4</a> , <a href="#">Q9ERD7</a> , <a href="#">Q60HC2</a> , <a href="#">Q2T9S0</a> , <a href="#">NP_006077.2</a>
Reactivity	Human, Mouse
Predicted	Bovine, Monkey, Rat, Chicken
Host	Rabbit
Clonality	Polyclonal
Isotype	Rabbit IgG
Antigen Region	36-63

**TUBB3 Antibody (N-term) - Additional Information**

**Gene ID** 10381

**Other Names**

Tubulin beta-3 chain, Tubulin beta-4 chain, Tubulin beta-III, TUBB3, TUBB4

**Target/Specificity**

This TUBB3 antibody is generated from rabbits immunized with a KLH conjugated synthetic peptide between 36-63 amino acids of human TUBB3.

**Dilution**

WB~~1:1000  
IHC-P~~1:10~50  
FC~~1:10~50

**Format**

Purified polyclonal antibody supplied in PBS with 0.09% (W/V) sodium azide. This antibody is purified through a protein A column, followed by peptide affinity purification.

**Storage**

Maintain refrigerated at 2-8°C for up to 2 weeks. For long term storage store at -20°C in small aliquots to prevent freeze-thaw cycles.

**Precautions**

TUBB3 Antibody (N-term) is for research use only and not for use in diagnostic or therapeutic procedures.

**TUBB3 Antibody (N-term) - Protein Information**

**Name** TUBB3

## Synonyms TUBB4

**Function** Tubulin is the major constituent of microtubules, a cylinder consisting of laterally associated linear protofilaments composed of alpha- and beta-tubulin heterodimers (PubMed:[34996871](#)). Microtubules grow by the addition of GTP-tubulin dimers to the microtubule end, where a stabilizing cap forms (PubMed:[34996871](#)). Below the cap, tubulin dimers are in GDP-bound state, owing to GTPase activity of alpha- tubulin (PubMed:[34996871](#)). TUBB3 plays a critical role in proper axon guidance and maintenance (PubMed:[20074521](#)). Binding of NTN1/Netrin-1 to its receptor UNC5C might cause dissociation of UNC5C from polymerized TUBB3 in microtubules and thereby lead to increased microtubule dynamics and axon repulsion (PubMed:[28483977](#)). Plays a role in dorsal root ganglion axon projection towards the spinal cord (PubMed:[28483977](#)).

## Cellular Location

Cytoplasm, cytoskeleton. Cell projection, growth cone {ECO:0000250|UniProtKB:Q9ERD7}. Cell projection, lamellipodium {ECO:0000250|UniProtKB:Q9ERD7}. Cell projection, filopodium {ECO:0000250|UniProtKB:Q9ERD7}

## Tissue Location

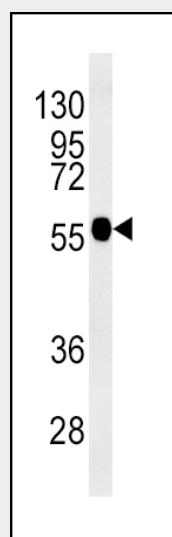
Expression is primarily restricted to central and peripheral nervous system. Greatly increased expression in most cancerous tissues.

## TUBB3 Antibody (N-term) - Protocols

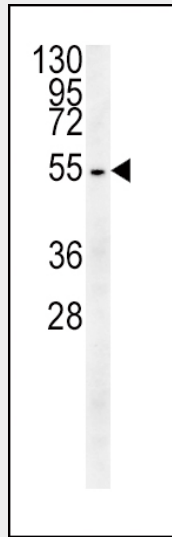
Provided below are standard protocols that you may find useful for product applications.

- [Western Blot](#)
- [Blocking Peptides](#)
- [Dot Blot](#)
- [Immunohistochemistry](#)
- [Immunofluorescence](#)
- [Immunoprecipitation](#)
- [Flow Cytometry](#)
- [Cell Culture](#)

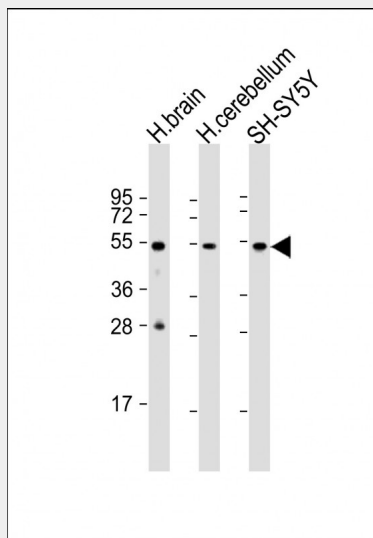
## TUBB3 Antibody (N-term) - Images



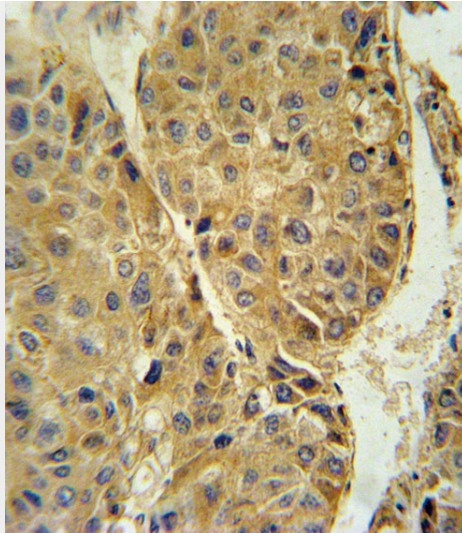
TUBB3 Antibody (N-term) (Cat. #AP5752a) western blot analysis in mouse brain tissue lysates (15ug/lane). This demonstrates the TUBB3 antibody detected the TUBB3 protein (arrow).



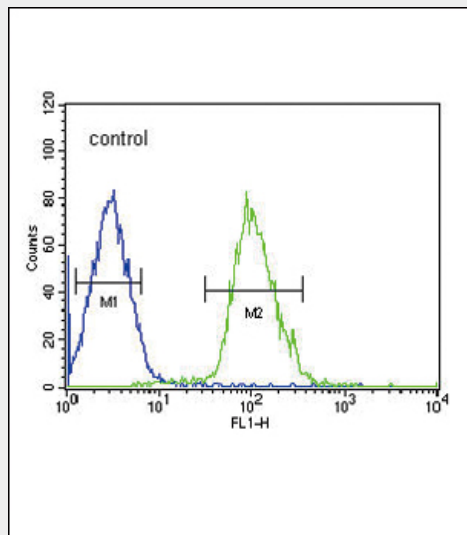
TUBB3 Antibody (N-term) (Cat. #AP5752a) western blot analysis in HepG2 cell line lysates (15ug/lane). This demonstrates the TUBB3 antibody detected the TUBB3 protein (arrow).



All lanes : Anti-TUBB3 Antibody (N-term) at 1:1000 dilution Lane 1: human brain lysate Lane 2: human cerebellum lysate Lane 3: SH-SY5Y whole cell lysate Lysates/proteins at 20 µg per lane. Secondary Goat Anti-Rabbit IgG, (H+L), Peroxidase conjugated at 1/10000 dilution. Predicted band size : 50 kDa Blocking/Dilution buffer: 5% NFD/MTBST.



TUBB3 Antibody (N-term) (Cat. #AP5752a) immunohistochemistry analysis in formalin fixed and paraffin embedded human hepatocarcinoma followed by peroxidase conjugation of the secondary antibody and DAB staining. This data demonstrates the use of the TUBB3 Antibody (N-term) for immunohistochemistry. Clinical relevance has not been evaluated.



TUBB3 Antibody (N-term) (Cat. #AP5752a) flow cytometric analysis of HepG2 cells (right histogram) compared to a negative control cell (left histogram). FITC-conjugated goat-anti-rabbit secondary antibodies were used for the analysis.

**TUBB3 Antibody (N-term) - Background**

Beta III tubulin is abundant in the central and peripheral nervous systems (CNS and PNS) where it is prominently expressed during fetal and postnatal development. As exemplified in cerebellar and sympathoadrenal neurogenesis, the distribution of beta III is neuron-associated, exhibiting distinct temporospatial gradients according to the regional neuroepithelia of origin. However, transient expression of this protein is also present in the subventricular zones of the CNS comprising putative neuronal- and/or glial precursor cells, as well as in Kulchitsky neuroendocrine cells of the fetal respiratory epithelium. This temporally restricted, potentially non-neuronal expression may have implications in the identification of presumptive neurons derived from embryonic stem cells.

**TUBB3 Antibody (N-term) - References**

Khan, I.A., et al. Biochemistry 35(12):3704-3711(1996)

Khan, I.A., et al. Biochemistry 35(12):3704-3711(1996)

Vinores, S.A., et al. Exp. Eye Res. 60(4):385-400(1995)

**TUBB3 Antibody (N-term) - Citations**

- [miR-501 is upregulated in cervical cancer and promotes cell proliferation, migration and invasion by targeting CYLD.](#)
- [Pejvakin, a Candidate Stereociliary Rootlet Protein, Regulates Hair Cell Function in a Cell-Autonomous Manner.](#)
- [Calpain-dependent cytoskeletal rearrangement exploited for anthrax toxin endocytosis.](#)