

**NDFIP2 Polyclonal Antibody**  
**Purified Rabbit Polyclonal Antibody (Pab)**  
**Catalog # AP57376**

## Specification

---

### NDFIP2 Polyclonal Antibody - Product Information

Application	WB
Primary Accession	<a href="#">O9NV92</a>
Reactivity	Rat, Pig, Dog, Bovine
Host	Rabbit
Clonality	Polyclonal
Calculated MW	36390

### NDFIP2 Polyclonal Antibody - Additional Information

Gene ID 54602

#### Other Names

NEDD4 family-interacting protein 2, NEDD4 WW domain-binding protein 5A, Putative MAPK-activating protein PM04/PM05/PM06/PM07, Putative NF-kappa-B-activating protein 413, NDFIP2, KIAA1165, N4WBP5A

#### Format

0.01M TBS(pH7.4), 0.09% (W/V) sodium azide and 50% Glyce

#### Storage

Store at -20 °C for one year. Avoid repeated freeze/thaw cycles. When reconstituted in sterile pH 7.4 0.01M PBS or diluent of antibody the antibody is stable for at least two weeks at 2-4 °C.

### NDFIP2 Polyclonal Antibody - Protein Information

Name NDFIP2

Synonyms KIAA1165, N4WBP5A

#### Function

Activates HECT domain-containing E3 ubiquitin-protein ligases, including ITCH, NEDD4, NEDD4L, SMURF2, WWP1 and WWP2, and consequently modulates the stability of their targets. As a result, may control many cellular processes. Recruits ITCH, NEDD4 and SMURF2 to endosomal membranes. Negatively regulates KCNH2 potassium channel activity by decreasing its cell-surface expression and interfering with channel maturation through recruitment of NEDD4L to the Golgi apparatus and multivesicular body where it mediates KCNH2 degradation (PubMed:<a href="http://www.uniprot.org/citations/26363003" target="\_blank">26363003</a>). May modulate EGFR signaling. Together with NDFIP1, limits the cytokine signaling and expansion of effector Th2 T-cells by promoting degradation of JAK1, probably by ITCH- and NEDD4L-mediated ubiquitination (By similarity).

#### Cellular Location

Endosome membrane; Multi-pass membrane protein. Golgi apparatus membrane. Endosome, multivesicular body membrane

#### Tissue Location

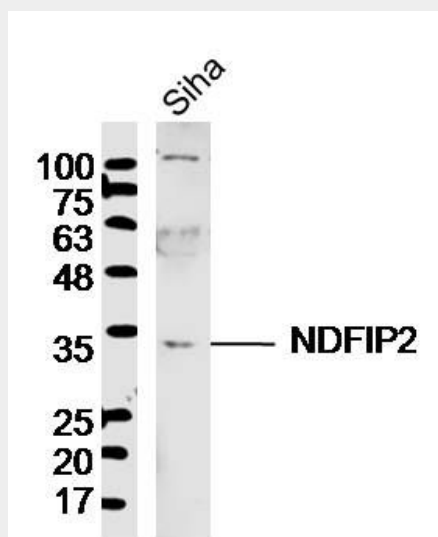
Expressed in brain, lung, heart, skeletal muscle, kidney, liver and placenta.

#### NDFIP2 Polyclonal Antibody - Protocols

Provided below are standard protocols that you may find useful for product applications.

- [Western Blot](#)
- [Blocking Peptides](#)
- [Dot Blot](#)
- [Immunohistochemistry](#)
- [Immunofluorescence](#)
- [Immunoprecipitation](#)
- [Flow Cytometry](#)
- [Cell Culture](#)

#### NDFIP2 Polyclonal Antibody - Images



Sample: Siha Cell (Human) Lysate at 40 ug  
Primary: Anti- NDFIP2 (bs-19059R) at 1/300 dilution  
Secondary: IRDye800CW Goat Anti-Rabbit IgG at 1/20000 dilution  
Predicted band size: 36 kD  
Observed band size: 34 kD