

LDHD Antibody (N-term)
Affinity Purified Rabbit Polyclonal Antibody (Pab)
Catalog # AP5733a

Specification

LDHD Antibody (N-term) - Product Information

Application	WB, IHC-P, FC,E
Primary Accession	O86WU2
Other Accession	NP_705690.2
Reactivity	Human
Host	Rabbit
Clonality	Polyclonal
Isotype	Rabbit IgG
Calculated MW	54871
Antigen Region	35-62

LDHD Antibody (N-term) - Additional Information

Gene ID 197257

Other Names

Probable D-lactate dehydrogenase, mitochondrial, DLD, Lactate dehydrogenase D, LDHD ([HGNC:19708](http://www.genenames.org/cgi-bin/gene_symbol_report?hgnc_id=19708))

Target/Specificity

This LDHD antibody is generated from rabbits immunized with a KLH conjugated synthetic peptide between 35-62 amino acids from the N-terminal region of human LDHD.

Dilution

WB~~1:1000
IHC-P~~1:50~100
FC~~1:10~50

Format

Purified polyclonal antibody supplied in PBS with 0.09% (W/V) sodium azide. This antibody is purified through a protein A column, followed by peptide affinity purification.

Storage

Maintain refrigerated at 2-8°C for up to 2 weeks. For long term storage store at -20°C in small aliquots to prevent freeze-thaw cycles.

Precautions

LDHD Antibody (N-term) is for research use only and not for use in diagnostic or therapeutic procedures.

LDHD Antibody (N-term) - Protein Information

Name LDHD ([HGNC:19708](#))

Function Involved in D-lactate, but not L-lactate catabolic process.

Cellular Location

Mitochondrion {ECO:0000250|UniProtKB:Q7TNG8}.

Tissue Location

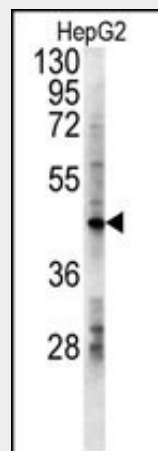
Expressed moderately in heart and liver and at lower levels in skeletal muscle and kidney

LDHD Antibody (N-term) - Protocols

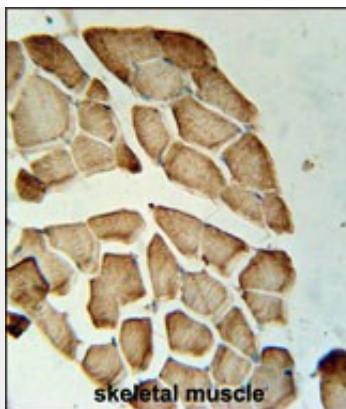
Provided below are standard protocols that you may find useful for product applications.

- [Western Blot](#)
- [Blocking Peptides](#)
- [Dot Blot](#)
- [Immunohistochemistry](#)
- [Immunofluorescence](#)
- [Immunoprecipitation](#)
- [Flow Cytometry](#)
- [Cell Culture](#)

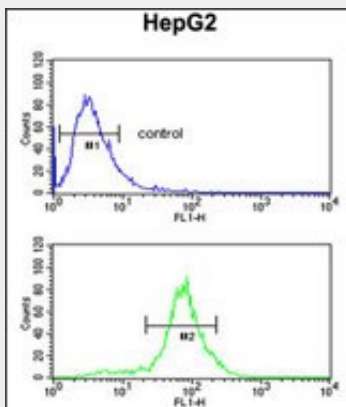
LDHD Antibody (N-term) - Images



LDHD Antibody (N-term) (Cat. #AP5733a) western blot analysis in HepG2 cell line lysates (15ug/lane). This demonstrates the LDHD antibody detected the LDHD protein (arrow).



LDHD Antibody (N-term) (Cat. #AP5733a) immunohistochemistry analysis in formalin fixed and paraffin embedded human skeletal muscle followed by peroxidase conjugation of the secondary antibody and DAB staining. This data demonstrates the use of the LDHD Antibody (N-term) for immunohistochemistry. Clinical relevance has not been evaluated.



LDHD Antibody (N-term) (Cat. #AP5733a) flow cytometric analysis of HepG2 cells (bottom histogram) compared to a negative control cell (top histogram). FITC-conjugated goat-anti-rabbit secondary antibodies were used for the analysis.

LDHD Antibody (N-term) - Background

LDHD belongs to the D-isomer specific 2-hydroxyacid dehydrogenase family. The similar protein in yeast has both D-lactate and D-glycerate dehydrogenase activities. Alternative splicing occurs at this locus and two transcript variants encoding distinct isoforms have been identified. [provided by RefSeq].

LDHD Antibody (N-term) - References

Dastani, Z., et al. Eur. J. Hum. Genet. (2009) In press :
Flick, M.J., et al. Biochem. Biophys. Res. Commun. 295(4):910-916(2002)