

MAPRE1 Polyclonal Antibody
Purified Rabbit Polyclonal Antibody (Pab)
Catalog # AP57211

Specification

MAPRE1 Polyclonal Antibody - Product Information

Application	IHC-P
Primary Accession	Q15691
Reactivity	Rat, Dog, Bovine
Host	Rabbit
Clonality	Polyclonal
Calculated MW	29999

MAPRE1 Polyclonal Antibody - Additional Information

Gene ID 22919

Other Names

Microtubule-associated protein RP/EB family member 1, APC-binding protein EB1, End-binding protein 1, EB1, MAPRE1

Format

0.01M TBS(pH7.4), 0.09% (W/V) sodium azide and 50% Glyce

Storage

Store at -20 °C for one year. Avoid repeated freeze/thaw cycles. When reconstituted in sterile pH 7.4 0.01M PBS or diluent of antibody the antibody is stable for at least two weeks at 2-4 °C.

MAPRE1 Polyclonal Antibody - Protein Information

Name MAPRE1 ([HGNC:6890](#))

Function

Plus-end tracking protein (+TIP) that binds to the plus-end of microtubules and regulates the dynamics of the microtubule cytoskeleton (PubMed:[12388762](http://www.uniprot.org/citations/12388762), PubMed:[16109370](http://www.uniprot.org/citations/16109370), PubMed:[19632184](http://www.uniprot.org/citations/19632184), PubMed:[21646404](http://www.uniprot.org/citations/21646404), PubMed:[23001180](http://www.uniprot.org/citations/23001180), PubMed:[28726242](http://www.uniprot.org/citations/28726242), PubMed:[28814570](http://www.uniprot.org/citations/28814570), PubMed:[34608293](http://www.uniprot.org/citations/34608293)). Promotes cytoplasmic microtubule nucleation and elongation (PubMed:[12388762](http://www.uniprot.org/citations/12388762), PubMed:[16109370](http://www.uniprot.org/citations/16109370), PubMed:[19632184](http://www.uniprot.org/citations/19632184), PubMed:[21646404](http://www.uniprot.org/citations/21646404), PubMed:[23001180](http://www.uniprot.org/citations/23001180), PubMed:[28726242](http://www.uniprot.org/citations/28726242), PubMed:[28814570](http://www.uniprot.org/citations/28814570), PubMed:[34608293](http://www.uniprot.org/citations/34608293)).

[28726242](http://www.uniprot.org/citations/28726242), PubMed: [28814570](http://www.uniprot.org/citations/28814570)). Involved in mitotic spindle positioning by stabilizing microtubules and promoting dynamic connection between astral microtubules and the cortex during mitotic chromosome segregation (PubMed: [12388762](http://www.uniprot.org/citations/12388762), PubMed: [34608293](http://www.uniprot.org/citations/34608293)). Also acts as a regulator of minus-end microtubule organization: interacts with the complex formed by AKAP9 and PDE4DIP, leading to recruit CAMSAP2 to the Golgi apparatus, thereby tethering non-centrosomal minus-end microtubules to the Golgi, an important step for polarized cell movement (PubMed: [28814570](http://www.uniprot.org/citations/28814570)). Promotes elongation of CAMSAP2-decorated microtubule stretches on the minus-end of microtubules (PubMed: [28814570](http://www.uniprot.org/citations/28814570)). Acts as a regulator of autophagosome transport via interaction with CAMSAP2 (PubMed: [28726242](http://www.uniprot.org/citations/28726242)). Functions downstream of Rho GTPases and DIAPH1 in stable microtubule formation (By similarity). May play a role in cell migration (By similarity).

Cellular Location

Cytoplasm, cytoskeleton. Cytoplasm, cytoskeleton, microtubule organizing center, centrosome. Golgi apparatus. Cytoplasm, cytoskeleton, spindle. Cytoplasm, cytoskeleton, spindle pole. Note=Associated with the microtubule growing distal tips (PubMed:28814570). Recruitment to the Golgi apparatus requires the presence of PDE4DIP isoform 13/MMG8/SMYLE (PubMed:25217626).

Tissue Location

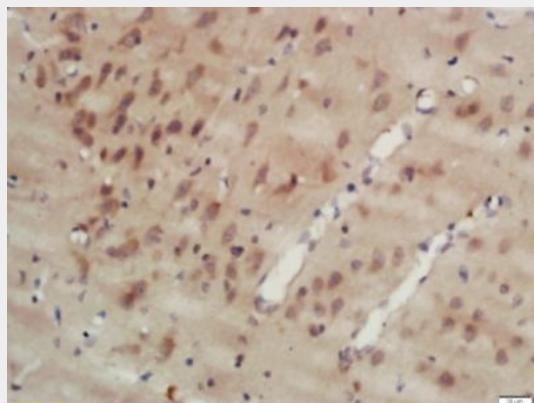
Ubiquitously expressed.

MAPRE1 Polyclonal Antibody - Protocols

Provided below are standard protocols that you may find useful for product applications.

- [Western Blot](#)
- [Blocking Peptides](#)
- [Dot Blot](#)
- [Immunohistochemistry](#)
- [Immunofluorescence](#)
- [Immunoprecipitation](#)
- [Flow Cytometry](#)
- [Cell Culture](#)

MAPRE1 Polyclonal Antibody - Images



Tissue/cell: rat brain tissue; 4% Paraformaldehyde-fixed and paraffin-embedded;
Antigen retrieval: citrate buffer (0.01M, pH 6.0), Boiling bathing for 15min; Block endogenous peroxidase by 3% Hydrogen peroxide for 30min; Blocking buffer (normal goat serum,C-0005) at 37°C for 20 min;
Incubation: Anti-MAPRE1 Polyclonal Antibody, Unconjugated(bs-18675R) 1:200, overnight at 4°C, followed by conjugation to the secondary antibody(SP-0023) and DAB(C-0010) staining