

DLDD/Lipoamide Dehydrogenase Polyclonal Antibody
Purified Rabbit Polyclonal Antibody (Pab)
Catalog # AP57025**Specification**

DLDD/Lipoamide Dehydrogenase Polyclonal Antibody - Product Information

Application	IHC-P
Primary Accession	P09622
Reactivity	Rat, Dog, Bovine
Host	Rabbit
Clonality	Polyclonal
Calculated MW	54177

DLDD/Lipoamide Dehydrogenase Polyclonal Antibody - Additional Information**Gene ID** 1738**Other Names**

Dihydrolipoyl dehydrogenase, mitochondrial, 1.8.1.4, Dihydrolipoamide dehydrogenase, Glycine cleavage system L protein, DLD, GCSL, LAD, PHE3

Format

0.01M TBS(pH7.4), 0.09% (W/V) sodium azide and 50% Glyce

Storage

Store at -20 °C for one year. Avoid repeated freeze/thaw cycles. When reconstituted in sterile pH 7.4 0.01M PBS or diluent of antibody the antibody is stable for at least two weeks at 2-4 °C.

DLDD/Lipoamide Dehydrogenase Polyclonal Antibody - Protein Information**Name** DLD**Synonyms** GCSL, LAD, PHE3**Function**

Lipoamide dehydrogenase is a component of the glycine cleavage system as well as an E3 component of three alpha-ketoacid dehydrogenase complexes (pyruvate-, alpha-ketoglutarate-, and branched- chain amino acid-dehydrogenase complex) (PubMed:15712224, PubMed:16442803, PubMed:16770810, PubMed:17404228, PubMed:20160912, PubMed:20385101). The 2-oxoglutarate dehydrogenase complex is mainly active in the mitochondrion (PubMed:29211711). A fraction of the 2-oxoglutarate dehydrogenase complex also localizes in the nucleus and is required for lysine succinylation of histones: associates with KAT2A on chromatin and provides succinyl-CoA to

histone succinyltransferase KAT2A (PubMed:29211711). In monomeric form may have additional moonlighting function as serine protease (PubMed:17404228). Involved in the hyperactivation of spermatazoa during capacitation and in the spermatazoal acrosome reaction (By similarity).

Cellular Location

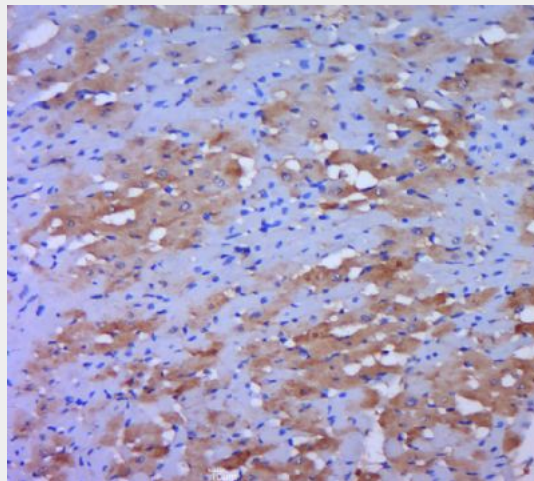
Mitochondrion matrix. Nucleus. Cell projection, cilium, flagellum {ECO:0000250|UniProtKB:Q811C4}. Cytoplasmic vesicle, secretory vesicle, acrosome. Note=Mainly localizes in the mitochondrion. A small fraction localizes to the nucleus, where the 2-oxoglutarate dehydrogenase complex is required for histone succinylation.

DLDD/Lipoamide Dehydrogenase Polyclonal Antibody - Protocols

Provided below are standard protocols that you may find useful for product applications.

- [Western Blot](#)
- [Blocking Peptides](#)
- [Dot Blot](#)
- [Immunohistochemistry](#)
- [Immunofluorescence](#)
- [Immunoprecipitation](#)
- [Flow Cytometry](#)
- [Cell Culture](#)

DLDD/Lipoamide Dehydrogenase Polyclonal Antibody - Images



Paraformaldehyde-fixed, paraffin embedded (rat heart tissue); Antigen retrieval by boiling in sodium citrate buffer (pH6.0) for 15min; Block endogenous peroxidase by 3% hydrogen peroxide for 20 minutes; Blocking buffer (normal goat serum) at 37°C for 30min; Antibody incubation with (DLDD) Polyclonal Antibody, Unconjugated (bs-18295R) at 1:400 overnight at 4°C, followed by a conjugated secondary (sp-0023) for 20 minutes and DAB staining.