

LGI2 Polyclonal Antibody
Purified Rabbit Polyclonal Antibody (Pab)
Catalog # AP57005

Specification

LGI2 Polyclonal Antibody - Product Information

Application	IHC-P, WB
Primary Accession	O8NOV4
Reactivity	Rat, Pig, Bovine
Host	Rabbit
Clonality	Polyclonal
Calculated MW	62298

LGI2 Polyclonal Antibody - Additional Information

Gene ID 55203

Other Names

Leucine-rich repeat LGI family member 2, LGI1-like protein 2, Leucine-rich glioma-inactivated protein 2, LGI2, KIAA1916, LGIL2

Format

0.01M TBS(pH7.4), 0.09% (W/V) sodium azide and 50% Glyce

Storage

Store at -20 °C for one year. Avoid repeated freeze/thaw cycles. When reconstituted in sterile pH 7.4 0.01M PBS or diluent of antibody the antibody is stable for at least two weeks at 2-4 °C.

LGI2 Polyclonal Antibody - Protein Information

Name LGI2

Synonyms KIAA1916, LGIL2

Function

Required for the development of soma-targeting inhibitory GABAergic synapses made by parvalbumin-positive basket cells.

Cellular Location

Secreted.

Tissue Location

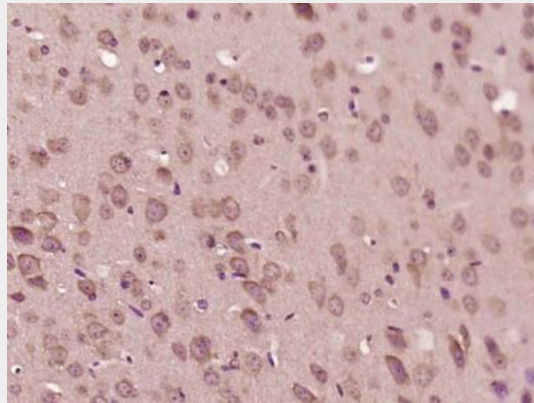
Brain, heart and placenta.

LGI2 Polyclonal Antibody - Protocols

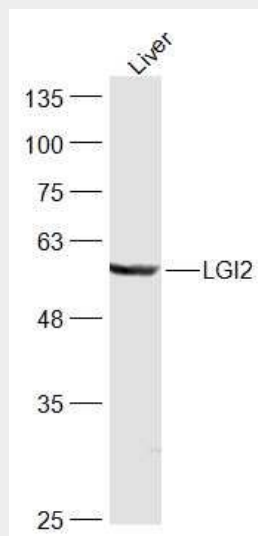
Provided below are standard protocols that you may find useful for product applications.

- [Western Blot](#)
- [Blocking Peptides](#)
- [Dot Blot](#)
- [Immunohistochemistry](#)
- [Immunofluorescence](#)
- [Immunoprecipitation](#)
- [Flow Cytometry](#)
- [Cell Culture](#)

LG12 Polyclonal Antibody - Images



Paraformaldehyde-fixed, paraffin embedded (Mouse brain); Antigen retrieval by boiling in sodium citrate buffer (pH6.0) for 15min; Block endogenous peroxidase by 3% hydrogen peroxide for 20 minutes; Blocking buffer (normal goat serum) at 37°C for 30min; Antibody incubation with (LG12) Polyclonal Antibody, Unconjugated (bs-18235R) at 1:500 overnight at 4°C, followed by a conjugated secondary (sp-0023) for 20 minutes and DAB staining.



Sample:

Liver (Mouse) Lysate at 40 ug

Primary: Anti-LG12 (bs-18235R) at 1/300 dilution

Secondary: IRDye800CW Goat Anti-Rabbit IgG at 1/20000 dilution

Predicted band size: 60 kD

Observed band size: 60 kD

