

NPTN Polyclonal Antibody
Purified Rabbit Polyclonal Antibody (Pab)
Catalog # AP56921

Specification

NPTN Polyclonal Antibody - Product Information

Application	WB
Primary Accession	O9Y639
Reactivity	Rat, Pig, Dog, Bovine
Host	Rabbit
Clonality	Polyclonal
Calculated MW	44387

NPTN Polyclonal Antibody - Additional Information

Gene ID 27020

Other Names

Neuroplastin, Stromal cell-derived receptor 1, SDR-1, NPTN, SDFR1, SDR1

Format

0.01M TBS(pH7.4), 0.09% (W/V) sodium azide and 50% Glyce

Storage

Store at -20 °C for one year. Avoid repeated freeze/thaw cycles. When reconstituted in sterile pH 7.4 0.01M PBS or diluent of antibody the antibody is stable for at least two weeks at 2-4 °C.

NPTN Polyclonal Antibody - Protein Information

Name NPTN

Synonyms SDFR1, SDR1

Function

Probable homophilic and heterophilic cell adhesion molecule involved in long term potentiation at hippocampal excitatory synapses through activation of p38MAPK. May also regulate neurite outgrowth by activating the FGFR1 signaling pathway. May play a role in synaptic plasticity (By similarity). Also acts as a chaperone for ATP2B1; stabilizes ATP2B1 and increases its ATPase activity (PubMed:30190470). Promotes localization of XKR8 at the cell membrane (PubMed:27503893).

Cellular Location

Cell membrane {ECO:0000250|UniProtKB:P97546}; Single-pass type I membrane protein {ECO:0000250|UniProtKB:P97546}

Tissue Location

Isoform 1 is ubiquitously expressed. Isoform 2 is expressed in brain cortex and cerebellum (at

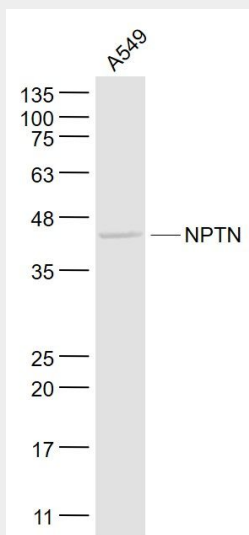
protein level) {ECO:0000269|PubMed:17196182, ECO:0000269|Ref.1}

NPTN Polyclonal Antibody - Protocols

Provided below are standard protocols that you may find useful for product applications.

- [Western Blot](#)
- [Blocking Peptides](#)
- [Dot Blot](#)
- [Immunohistochemistry](#)
- [Immunofluorescence](#)
- [Immunoprecipitation](#)
- [Flow Cytometry](#)
- [Cell Culture](#)

NPTN Polyclonal Antibody - Images



Sample:

A549(Human) Cell Lysate at 30 ug

Primary: Anti- NPTN (bs-1801R) at 1/1000 dilution

Secondary: IRDye800CW Goat Anti-Rabbit IgG at 1/20000 dilution

Predicted band size: 42 kD

Observed band size: 42 kD