

MRPL49 Polyclonal Antibody
Purified Rabbit Polyclonal Antibody (Pab)
Catalog # AP56838

Specification

MRPL49 Polyclonal Antibody - Product Information

Application	WB
Primary Accession	O13405
Reactivity	Rat, Dog, Bovine
Host	Rabbit
Clonality	Polyclonal
Calculated MW	19198

MRPL49 Polyclonal Antibody - Additional Information

Gene ID 740

Other Names

39S ribosomal protein L49, mitochondrial, L49mt, MRP-L49, Mitochondrial large ribosomal subunit protein mL49, Neighbor of FAU, NOF, Protein NOF1, MRPL49, C11orf4, NOF1

Format

0.01M TBS(pH7.4), 0.09% (W/V) sodium azide and 50% Glyce

Storage

Store at -20 °C for one year. Avoid repeated freeze/thaw cycles. When reconstituted in sterile pH 7.4 0.01M PBS or diluent of antibody the antibody is stable for at least two weeks at 2-4 °C.

MRPL49 Polyclonal Antibody - Protein Information

Name MRPL49

Synonyms C11orf4, NOF1

Cellular Location

Mitochondrion

Tissue Location

Ubiquitous.

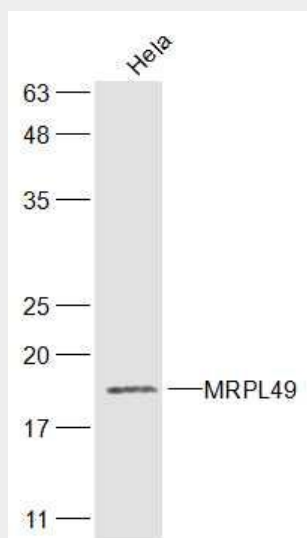
MRPL49 Polyclonal Antibody - Protocols

Provided below are standard protocols that you may find useful for product applications.

- [Western Blot](#)
- [Blocking Peptides](#)

- [Dot Blot](#)
- [Immunohistochemistry](#)
- [Immunofluorescence](#)
- [Immunoprecipitation](#)
- [Flow Cytometry](#)
- [Cell Culture](#)

MRPL49 Polyclonal Antibody - Images



Sample:

HeLa(Human) Cell Lysate at 30 ug

Primary: Anti-MRPL49 (bs-17802R) at 1/300 dilution

Secondary: IRDye800CW Goat Anti-Rabbit IgG at 1/20000 dilution

Predicted band size: 19 kD

Observed band size: 19 kD