

TOM1L2 Polyclonal Antibody
Purified Rabbit Polyclonal Antibody (Pab)
Catalog # AP56616

Specification

TOM1L2 Polyclonal Antibody - Product Information

Application	WB
Primary Accession	Q6ZVM7
Reactivity	Rat, Dog
Host	Rabbit
Clonality	Polyclonal
Calculated MW	55556

TOM1L2 Polyclonal Antibody - Additional Information

Gene ID 146691

Other Names

TOM1-like protein 2, Target of Myb-like protein 2, TOM1L2

Format

0.01M TBS(pH7.4), 0.09% (W/V) sodium azide and 50% Glyce

Storage

Store at -20 °C for one year. Avoid repeated freeze/thaw cycles. When reconstituted in sterile pH 7.4 0.01M PBS or diluent of antibody the antibody is stable for at least two weeks at 2-4 °C.

TOM1L2 Polyclonal Antibody - Protein Information

Name TOM1L2

Function

Acts as a MYO6/Myosin VI adapter protein that targets myosin VI to endocytic structures (PubMed:23023224). May also play a role in recruiting clathrin to endosomes (PubMed:16412388). May regulate growth factor-induced mitogenic signaling (PubMed:16479011).

Tissue Location

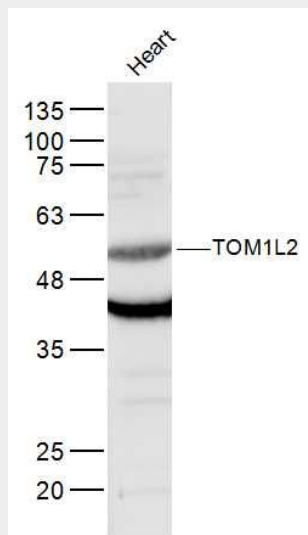
Ubiquitously expressed with higher expression in heart and skeletal muscle.

TOM1L2 Polyclonal Antibody - Protocols

Provided below are standard protocols that you may find useful for product applications.

- [Western Blot](#)
- [Blocking Peptides](#)
- [Dot Blot](#)
- [Immunohistochemistry](#)
- [Immunofluorescence](#)
- [Immunoprecipitation](#)
- [Flow Cytometry](#)
- [Cell Culture](#)

TOM1L2 Polyclonal Antibody - Images



Sample:

Heart (Mouse) Lysate at 40 ug

Primary: Anti-TOM1L2 (bs-17223R) at 1/300 dilution

Secondary: IRDye800CW Goat Anti-Rabbit IgG at 1/20000 dilution

Predicted band size: 56 kD

Observed band size: 56 kD