

**TRIM9 Polyclonal Antibody**  
**Purified Rabbit Polyclonal Antibody (Pab)**  
**Catalog # AP56574****Specification**

---

**TRIM9 Polyclonal Antibody - Product Information**

Application	IHC-P
Primary Accession	<a href="#">O9C026</a>
Reactivity	Rat, Pig, Dog, Bovine
Host	Rabbit
Clonality	Polyclonal
Calculated MW	79177

**TRIM9 Polyclonal Antibody - Additional Information****Gene ID** 114088**Other Names**

E3 ubiquitin-protein ligase TRIM9, 2.3.2.27, RING finger protein 91, RING-type E3 ubiquitin transferase TRIM9, Tripartite motif-containing protein 9, TRIM9, KIAA0282, RNF91

**Format**

0.01M TBS(pH7.4), 0.09% (W/V) sodium azide and 50% Glyce

**Storage**

Store at -20 °C for one year. Avoid repeated freeze/thaw cycles. When reconstituted in sterile pH 7.4 0.01M PBS or diluent of antibody the antibody is stable for at least two weeks at 2-4 °C.

**TRIM9 Polyclonal Antibody - Protein Information****Name** TRIM9**Synonyms** KIAA0282, RNF91**Function**

E3 ubiquitin-protein ligase which ubiquitinates itself in cooperation with an E2 enzyme UBE2D2/UBC4 and serves as a targeting signal for proteasomal degradation. May play a role in regulation of neuronal functions and may also participate in the formation or breakdown of abnormal inclusions in neurodegenerative disorders. May act as a regulator of synaptic vesicle exocytosis by controlling the availability of SNAP25 for the SNARE complex formation.

**Cellular Location**

Cytoplasm. Cell projection, dendrite. Cytoplasmic vesicle, secretory vesicle, synaptic vesicle {ECO:0000250|UniProtKB:Q91ZY8}. Synapse {ECO:0000250|UniProtKB:Q91ZY8} Cytoplasm, cytoskeleton {ECO:0000250|UniProtKB:Q91ZY8}. Note=Enriched at synaptic terminals where it exists in a soluble form and a synaptic vesicle-associated form. Associated with the cytoskeleton (By similarity). Found in proximal dendrites of pyramidal neurons in the cerebral cortex and hippocampus, and Purkinje cells in the cerebellum (PubMed:20085810).

{ECO:0000250|UniProtKB:Q91ZY8, ECO:0000269|PubMed:20085810}

### Tissue Location

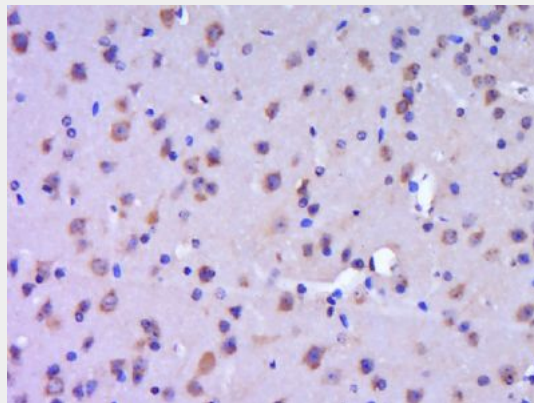
Brain. Highly expressed in the cerebral cortex (at protein level). Severely decreased in the affected brain areas in Parkinson disease and dementia with Lewy bodies

### TRIM9 Polyclonal Antibody - Protocols

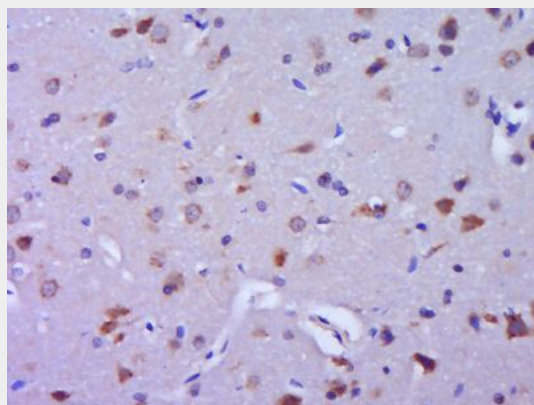
Provided below are standard protocols that you may find useful for product applications.

- [Western Blot](#)
- [Blocking Peptides](#)
- [Dot Blot](#)
- [Immunohistochemistry](#)
- [Immunofluorescence](#)
- [Immunoprecipitation](#)
- [Flow Cytometry](#)
- [Cell Culture](#)

### TRIM9 Polyclonal Antibody - Images



Paraformaldehyde-fixed, paraffin embedded (Mouse brain); Antigen retrieval by boiling in sodium citrate buffer (pH6.0) for 15min; Block endogenous peroxidase by 3% hydrogen peroxide for 20 minutes; Blocking buffer (normal goat serum) at 37°C for 30min; Antibody incubation with (TRIM9) Polyclonal Antibody, Unconjugated (bs-17139R) at 1:400 overnight at 4°C, followed by operating according to SP Kit(Rabbit) (sp-0023) instructions and DAB staining.



Paraformaldehyde-fixed, paraffin embedded (Rat brain); Antigen retrieval by boiling in sodium

citrate buffer (pH6.0) for 15min; Block endogenous peroxidase by 3% hydrogen peroxide for 20 minutes; Blocking buffer (normal goat serum) at 37°C for 30min; Antibody incubation with (TRIM9) Polyclonal Antibody, Unconjugated (bs-17139R) at 1:400 overnight at 4°C, followed by operating according to SP Kit(Rabbit) (sp-0023) instructions and DAB staining.