

KATNAL1 Polyclonal Antibody
Purified Rabbit Polyclonal Antibody (Pab)
Catalog # AP56548

Specification

KATNAL1 Polyclonal Antibody - Product Information

Application	WB
Primary Accession	O9BW62
Reactivity	Rat, Pig, Dog
Host	Rabbit
Clonality	Polyclonal
Calculated MW	55392

KATNAL1 Polyclonal Antibody - Additional Information

Gene ID 84056

Other Names

Katanin p60 ATPase-containing subunit A-like 1 {ECO:0000255|HAMAP-Rule:MF_03024}, Katanin p60 subunit A-like 1 {ECO:0000255|HAMAP-Rule:MF_03024}, 5.6.1.1 {ECO:0000255|HAMAP-Rule:MF_03024}, p60 katanin-like 1 {ECO:0000255|HAMAP-Rule:MF_03024}, KATNAL1 {ECO:0000255|HAMAP-Rule:MF_03024}

Format

0.01M TBS(pH7.4), 0.09% (W/V) sodium azide and 50% Glyce

Storage

Store at -20 °C for one year. Avoid repeated freeze/thaw cycles. When reconstituted in sterile pH 7.4 0.01M PBS or diluent of antibody the antibody is stable for at least two weeks at 2-4 °C.

KATNAL1 Polyclonal Antibody - Protein Information

Name KATNAL1 {ECO:0000255|HAMAP-Rule:MF_03024}

Function

Regulates microtubule dynamics in Sertoli cells, a process that is essential for spermiogenesis and male fertility. Severs microtubules in an ATP-dependent manner, promoting rapid reorganization of cellular microtubule arrays (By similarity). Has microtubule- severing activity in vitro (PubMed:26929214).

Cellular Location

Cytoplasm, cytoskeleton {ECO:0000255|HAMAP- Rule:MF_03024, ECO:0000269|PubMed:22654668}. Cytoplasm. Cytoplasm, cytoskeleton, spindle pole. Cytoplasm, cytoskeleton, spindle. Note=Colocalizes with microtubules throughout the basal and adluminal compartments of Sertoli cells (By similarity). Localizes within the cytoplasm, partially overlapping with microtubules, in interphase and to the mitotic spindle and spindle poles during mitosis (PubMed:26929214). {ECO:0000250|UniProtKB:Q8K0T4, ECO:0000269|PubMed:26929214}

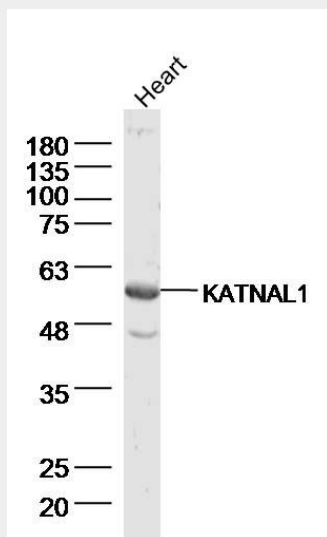
Tissue Location

Expressed in testis, restricted to Sertoli cells (at protein level).

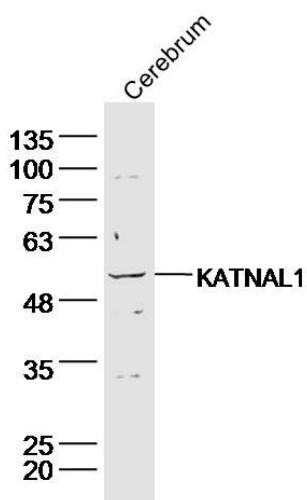
KATNAL1 Polyclonal Antibody - Protocols

Provided below are standard protocols that you may find useful for product applications.

- [Western Blot](#)
- [Blocking Peptides](#)
- [Dot Blot](#)
- [Immunohistochemistry](#)
- [Immunofluorescence](#)
- [Immunoprecipitation](#)
- [Flow Cytometry](#)
- [Cell Culture](#)

KATNAL1 Polyclonal Antibody - Images

Sample: Heart (Mouse) Lysate at 40 ug
Primary: Anti-KATNAL1 (bs-17080R) at 1/300 dilution
Secondary: IRDye800CW Goat Anti-Rabbit IgG at 1/20000 dilution
Predicted band size: 55 kD
Observed band size: 55 kD



Sample: Cerebrum (Mouse) Lysate at 40 ug
Primary: Anti-KATNAL1 (bs-17080R) at 1/300 dilution
Secondary: IRDye800CW Goat Anti-Rabbit IgG at 1/20000 dilution
Predicted band size: 55 kD
Observed band size: 55 kD