

Karyopherin beta 3 Polyclonal Antibody
Purified Rabbit Polyclonal Antibody (Pab)
Catalog # AP56546**Specification**

Karyopherin beta 3 Polyclonal Antibody - Product Information

Application	IHC-P
Primary Accession	O00410
Reactivity	Rat, Pig, Bovine
Host	Rabbit
Clonality	Polyclonal
Calculated MW	123630

Karyopherin beta 3 Polyclonal Antibody - Additional Information**Gene ID** 3843**Other Names**

Importin-5, Imp5, Importin subunit beta-3, Karyopherin beta-3, Ran-binding protein 5, RanBP5, IPO5, KPNB3, RANBP5

Format

0.01M TBS(pH7.4), 0.09% (W/V) sodium azide and 50% Glyce

Storage

Store at -20 °C for one year. Avoid repeated freeze/thaw cycles. When reconstituted in sterile pH 7.4 0.01M PBS or diluent of antibody the antibody is stable for at least two weeks at 2-4 °C.

Karyopherin beta 3 Polyclonal Antibody - Protein Information**Name** IPO5**Synonyms** KPNB3, RANBP5**Function**

Functions in nuclear protein import as nuclear transport receptor. Serves as receptor for nuclear localization signals (NLS) in cargo substrates. Is thought to mediate docking of the importin/substrate complex to the nuclear pore complex (NPC) through binding to nucleoporin and the complex is subsequently translocated through the pore by an energy requiring, Ran-dependent mechanism. At the nucleoplasmic side of the NPC, Ran binds to the importin, the importin/substrate complex dissociates and importin is re-exported from the nucleus to the cytoplasm where GTP hydrolysis releases Ran. The directionality of nuclear import is thought to be conferred by an asymmetric distribution of the GTP- and GDP-bound forms of Ran between the cytoplasm and nucleus (By similarity). Mediates the nuclear import of ribosomal proteins RPL23A, RPS7 and RPL5 (PubMed: [11682607](http://www.uniprot.org/citations/11682607) target="_blank">11682607, PubMed: [9687515](http://www.uniprot.org/citations/9687515) target="_blank">9687515). In vitro, mediates nuclear import of H2A, H2B, H3 and H4 histones. Binds to CPEB3 and mediates its nuclear import following neuronal stimulation (By

similarity). In case of HIV-1 infection, binds and mediates the nuclear import of HIV-1 Rev.

Cellular Location

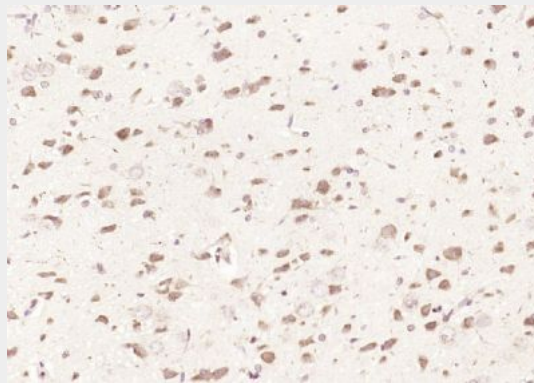
Cytoplasm. Nucleus. Nucleus, nucleolus. Note=Nucleus; nuclear rim. Found particularly in the nuclear rim and nucleolus

Karyopherin beta 3 Polyclonal Antibody - Protocols

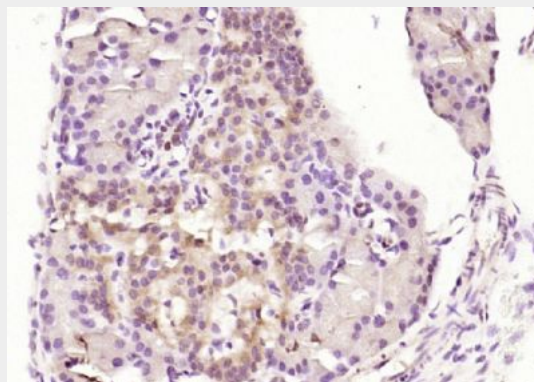
Provided below are standard protocols that you may find useful for product applications.

- [Western Blot](#)
- [Blocking Peptides](#)
- [Dot Blot](#)
- [Immunohistochemistry](#)
- [Immunofluorescence](#)
- [Immunoprecipitation](#)
- [Flow Cytometry](#)
- [Cell Culture](#)

Karyopherin beta 3 Polyclonal Antibody - Images

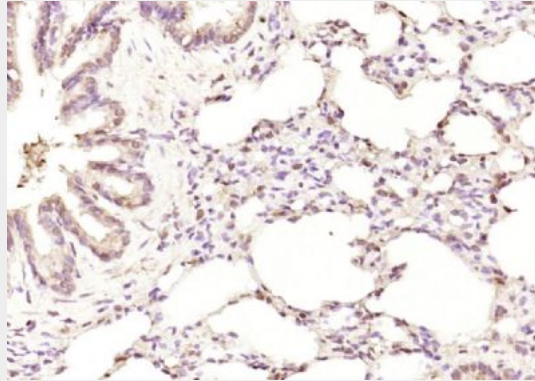


Paraformaldehyde-fixed, paraffin embedded (rat brain); Antigen retrieval by boiling in sodium citrate buffer (pH6.0) for 15min; Block endogenous peroxidase by 3% hydrogen peroxide for 20 minutes; Blocking buffer (normal goat serum) at 37°C for 30min; Antibody incubation with (Karyopherin beta 3) Polyclonal Antibody, Unconjugated (bs-17075R) at 1:200 overnight at 4°C, followed by operating according to SP Kit(Rabbit) (sp-0023) instructions and DAB staining.



Paraformaldehyde-fixed, paraffin embedded (rat pancreas); Antigen retrieval by boiling in sodium citrate buffer (pH6.0) for 15min; Block endogenous peroxidase by 3% hydrogen peroxide for 20

minutes; Blocking buffer (normal goat serum) at 37°C for 30min; Antibody incubation with (Karyopherin beta 3) Polyclonal Antibody, Unconjugated (bs-17075R) at 1:200 overnight at 4°C, followed by operating according to SP Kit(Rabbit) (sp-0023) instructions and DAB staining.



Paraformaldehyde-fixed, paraffin embedded (rat lung); Antigen retrieval by boiling in sodium citrate buffer (pH6.0) for 15min; Block endogenous peroxidase by 3% hydrogen peroxide for 20 minutes; Blocking buffer (normal goat serum) at 37°C for 30min; Antibody incubation with (Karyopherin beta 3) Polyclonal Antibody, Unconjugated (bs-17075R) at 1:200 overnight at 4°C, followed by operating according to SP Kit(Rabbit) (sp-0023) instructions and DAB staining.