

KIAA0649 Polyclonal Antibody
Purified Rabbit Polyclonal Antibody (Pab)
Catalog # AP56491

Specification

KIAA0649 Polyclonal Antibody - Product Information

Application	WB
Primary Accession	Q5T8A7
Reactivity	Rat, Dog
Host	Rabbit
Clonality	Polyclonal
Calculated MW	127351

KIAA0649 Polyclonal Antibody - Additional Information

Gene ID 9858

Other Names

Protein phosphatase 1 regulatory subunit 26, PPP1R26, KIAA0649

Format

0.01M TBS(pH7.4), 0.09% (W/V) sodium azide and 50% Glyce

Storage

Store at -20 °C for one year. Avoid repeated freeze/thaw cycles. When reconstituted in sterile pH 7.4 0.01M PBS or diluent of antibody the antibody is stable for at least two weeks at 2-4 °C.

KIAA0649 Polyclonal Antibody - Protein Information

Name PPP1R26

Synonyms KIAA0649

Function

Inhibits phosphatase activity of protein phosphatase 1 (PP1) complexes. May positively regulate cell proliferation.

Cellular Location

Nucleus, nucleolus.

Tissue Location

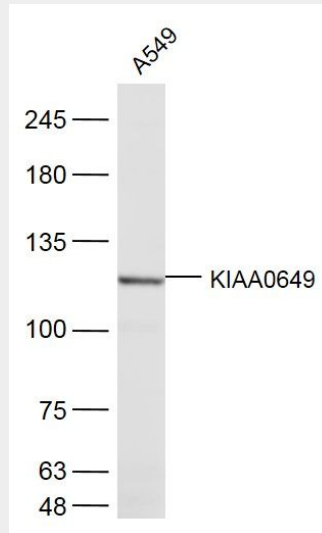
Ubiquitous in normal tissues. Expressed in numerous adenocarcinoma cell lines.

KIAA0649 Polyclonal Antibody - Protocols

Provided below are standard protocols that you may find useful for product applications.

- [Western Blot](#)
- [Blocking Peptides](#)
- [Dot Blot](#)
- [Immunohistochemistry](#)
- [Immunofluorescence](#)
- [Immunoprecipitation](#)
- [Flow Cytometry](#)
- [Cell Culture](#)

KIAA0649 Polyclonal Antibody - Images



Sample:

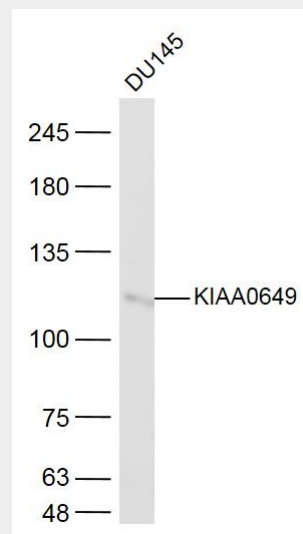
A549(Human) Cell Lysate at 40 ug

Primary: Anti-KIAA0649 (bs-16978R) at 1/300 dilution

Secondary: IRDye800CW Goat Anti-Rabbit IgG at 1/20000 dilution

Predicted band size: 127 kD

Observed band size: 127 kD



Sample:

DU145(Human) Cell Lysate at 40 ug

Primary: Anti-KIAA0649 (bs-16978R) at 1/300 dilution
Secondary: IRDye800CW Goat Anti-Rabbit IgG at 1/20000 dilution
Predicted band size: 127 kD
Observed band size: 127 kD