

**FRY/C13orf14 Polyclonal Antibody**  
**Purified Rabbit Polyclonal Antibody (Pab)**  
**Catalog # AP56168**

**Specification**

---

**FRY/C13orf14 Polyclonal Antibody - Product Information**

Application	IHC-P
Primary Accession	<a href="#">Q5TBA9</a>
Reactivity	Rat, Dog, Bovine
Host	Rabbit
Clonality	Polyclonal
Calculated MW	338875

**FRY/C13orf14 Polyclonal Antibody - Additional Information**

**Gene ID** 10129

**Other Names**

Protein furry homolog, FRY, C13orf14

**Format**

0.01M TBS(pH7.4), 0.09% (W/V) sodium azide and 50% Glyce

**Storage**

Store at -20 °C for one year. Avoid repeated freeze/thaw cycles. When reconstituted in sterile pH 7.4 0.01M PBS or diluent of antibody the antibody is stable for at least two weeks at 2-4 °C.

**FRY/C13orf14 Polyclonal Antibody - Protein Information**

**Name** FRY

**Synonyms** C13orf14

**Function**

Plays a crucial role in the structural integrity of mitotic centrosomes and in the maintenance of spindle bipolarity by promoting PLK1 activity at the spindle poles in early mitosis. May function as a scaffold promoting the interaction between AURKA and PLK1, thereby enhancing AURKA-mediated PLK1 phosphorylation.

**Cellular Location**

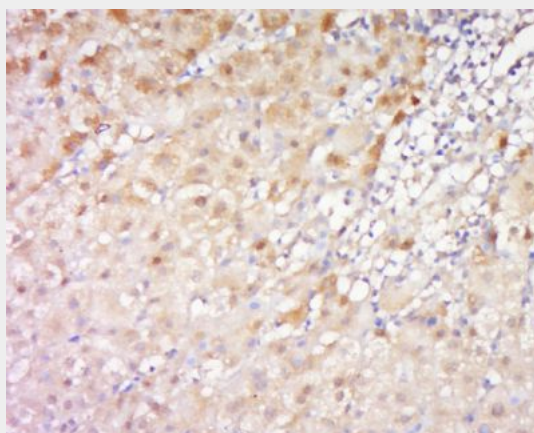
Cytoplasm. Cytoplasm, cytoskeleton, microtubule organizing center, centrosome. Cytoplasm, cytoskeleton, spindle pole. Note=Distributed diffusely throughout the cytoplasm in interphase. Localizes to the separating centrosomes in prophase, to the spindle poles and spindle microtubules in prometaphase to metaphase, to spindle microtubules in anaphase and to the distal sections of the midbody in cytokinesis. Colocalizes with PLK1 to separating centrosomes and spindle poles from prophase to metaphase in mitosis, but not in other stages of the cell cycle

## FRY/C13orf14 Polyclonal Antibody - Protocols

Provided below are standard protocols that you may find useful for product applications.

- [Western Blot](#)
- [Blocking Peptides](#)
- [Dot Blot](#)
- [Immunohistochemistry](#)
- [Immunofluorescence](#)
- [Immunoprecipitation](#)
- [Flow Cytometry](#)
- [Cell Culture](#)

## FRY/C13orf14 Polyclonal Antibody - Images



Tissue/cell: human hepatocellular carcinoma; 4% Paraformaldehyde-fixed and paraffin-embedded;  
Antigen retrieval: citrate buffer ( 0.01M, pH 6.0 ), Boiling bathing for 15min; Block endogenous peroxidase by 3% Hydrogen peroxide for 30min; Blocking buffer (normal goat serum,C-0005) at 37°C for 20 min;

Incubation: Anti-FRY/C13orf14 Polyclonal Antibody, Unconjugated(bs-16183R) 1:500, overnight at 4°C, followed by conjugation to the secondary antibody(SP-0023) and DAB(C-0010) staining