

GPR162 Polyclonal Antibody
Purified Rabbit Polyclonal Antibody (Pab)
Catalog # AP55974

Specification

GPR162 Polyclonal Antibody - Product Information

Application	WB
Primary Accession	Q16538
Reactivity	Rat, Pig, Dog, Bovine
Host	Rabbit
Clonality	Polyclonal
Calculated MW	63930

GPR162 Polyclonal Antibody - Additional Information

Gene ID 27239

Other Names

Probable G-protein coupled receptor 162, Gene-rich cluster gene A protein, GPR162, GRCA

Format

0.01M TBS(pH7.4), 0.09% (W/V) sodium azide and 50% Glyce

Storage

Store at -20 °C for one year. Avoid repeated freeze/thaw cycles. When reconstituted in sterile pH 7.4 0.01M PBS or diluent of antibody the antibody is stable for at least two weeks at 2-4 °C.

GPR162 Polyclonal Antibody - Protein Information

Name GPR162

Synonyms GRCA

Function

Orphan receptor.

Cellular Location

Cell membrane; Multi-pass membrane protein

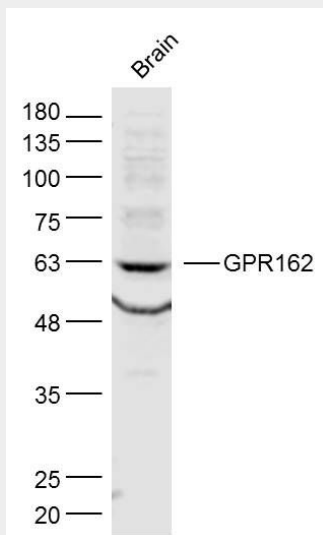
GPR162 Polyclonal Antibody - Protocols

Provided below are standard protocols that you may find useful for product applications.

- [Western Blot](#)
- [Blocking Peptides](#)
- [Dot Blot](#)

- [Immunohistochemistry](#)
- [Immunofluorescence](#)
- [Immunoprecipitation](#)
- [Flow Cytometry](#)
- [Cell Culture](#)

GPR162 Polyclonal Antibody - Images



Sample:

Brain (Mouse) Lysate at 40 ug

Primary: Anti-GPR162 (bs-15386R) at 1/300 dilution

Secondary: IRDye800CW Goat Anti-Rabbit IgG at 1/20000 dilution

Predicted band size: 64 kD

Observed band size: 63 kD