

C2orf16 Polyclonal Antibody
Purified Rabbit Polyclonal Antibody (Pab)
Catalog # AP55829

Specification

C2orf16 Polyclonal Antibody - Product Information

| | |
|-------------------|------------------------|
| Application | IHC-P |
| Primary Accession | O68DN1 |
| Host | Rabbit |
| Clonality | Polyclonal |
| Calculated MW | 224321 |

C2orf16 Polyclonal Antibody - Additional Information

Gene ID 84226

Other Names

Uncharacterized protein C2orf16, C2orf16

Format

0.01M TBS(pH7.4), 0.09% (W/V) sodium azide and 50% Glyce

Storage

Store at -20 °C for one year. Avoid repeated freeze/thaw cycles. When reconstituted in sterile pH 7.4 0.01M PBS or diluent of antibody the antibody is stable for at least two weeks at 2-4 °C.

C2orf16 Polyclonal Antibody - Protein Information

Name SPATA31H1 ([HGNC:25275](#))

Synonyms C2orf16

Tissue Location

Expressed in sperm (at protein level).

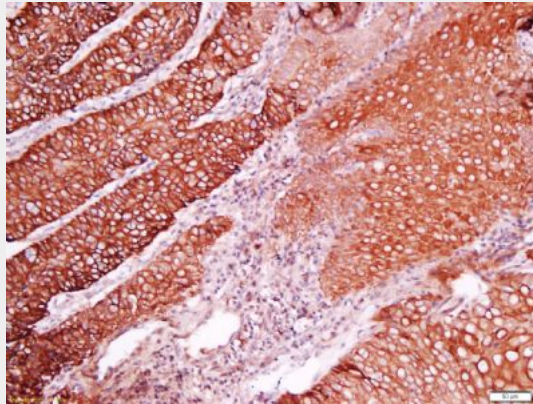
C2orf16 Polyclonal Antibody - Protocols

Provided below are standard protocols that you may find useful for product applications.

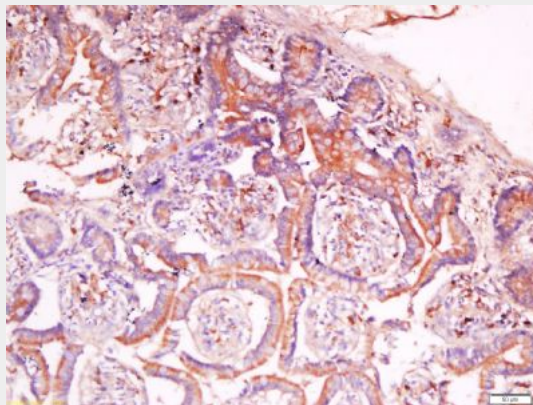
- [Western Blot](#)
- [Blocking Peptides](#)
- [Dot Blot](#)
- [Immunohistochemistry](#)
- [Immunofluorescence](#)
- [Immunoprecipitation](#)
- [Flow Cytometry](#)

- [Cell Culture](#)

C2orf16 Polyclonal Antibody - Images



Tissue/cell: human laryngo carcinoma; 4% Paraformaldehyde-fixed and paraffin-embedded;
Antigen retrieval: citrate buffer (0.01M, pH 6.0), Boiling bathing for 15min; Block endogenous peroxidase by 3% Hydrogen peroxide for 30min; Blocking buffer (normal goat serum,C-0005) at 37°C for 20 min;
Incubation: Anti-C2orf16 Polyclonal Antibody, Unconjugated(bs-15147R) 1:500, overnight at 4°C, followed by conjugation to the secondary antibody(SP-0023) and DAB(C-0010) staining



Tissue/cell: human colon cancer; 4% Paraformaldehyde-fixed and paraffin-embedded;
Antigen retrieval: citrate buffer (0.01M, pH 6.0), Boiling bathing for 15min; Block endogenous peroxidase by 3% Hydrogen peroxide for 30min; Blocking buffer (normal goat serum,C-0005) at 37°C for 20 min;
Incubation: Anti-C2orf16 Polyclonal Antibody, Unconjugated(bs-15147R) 1:500, overnight at 4°C, followed by conjugation to the secondary antibody(SP-0023) and DAB(C-0010) staining