

DNA Polymerase epsilon Polyclonal Antibody
Purified Rabbit Polyclonal Antibody (Pab)
Catalog # AP55535**Specification**

DNA Polymerase epsilon Polyclonal Antibody - Product Information

Application	IHC-P
Primary Accession	O9NRF9
Reactivity	Rat, Pig, Dog, Bovine
Host	Rabbit
Clonality	Polyclonal
Calculated MW	16860

DNA Polymerase epsilon Polyclonal Antibody - Additional Information**Gene ID** 54107**Other Names**

DNA polymerase epsilon subunit 3, Arsenic-transactivated protein, AsTP, Chromatin accessibility complex 17 kDa protein, CHRAC-17, HuCHRAC17, DNA polymerase II subunit 3, DNA polymerase epsilon subunit p17, POLE3, CHRAC17

Format

0.01M TBS(pH7.4), 0.09% (W/V) sodium azide and 50% Glycerol

Storage

Store at -20 °C for one year. Avoid repeated freeze/thaw cycles. When reconstituted in sterile pH 7.4 0.01M PBS or diluent of antibody the antibody is stable for at least two weeks at 2-4 °C.

DNA Polymerase epsilon Polyclonal Antibody - Protein Information**Name** POLE3**Synonyms** CHRAC17**Function**

Accessory component of the DNA polymerase epsilon complex (PubMed:[10801849](http://www.uniprot.org/citations/10801849)). Participates in DNA repair and in chromosomal DNA replication (By similarity). Forms a complex with CHRAC1 and binds naked DNA, which is then incorporated into chromatin, aided by the nucleosome-remodeling activity of ISWI/SNF2H and ACF1 (PubMed:[10801849](http://www.uniprot.org/citations/10801849)). Does not enhance nucleosome sliding activity of the ACF-5 ISWI chromatin remodeling complex (PubMed:[14759371](http://www.uniprot.org/citations/14759371)).

Cellular Location

Nucleus.

Tissue Location

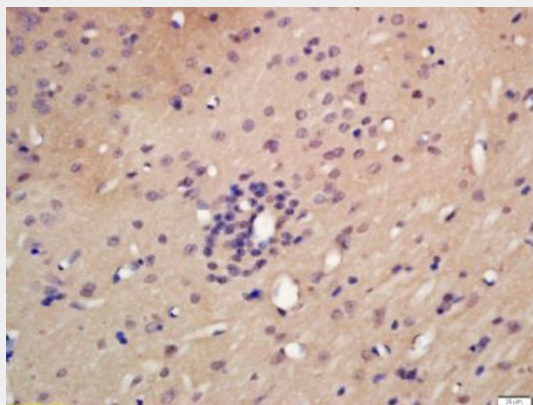
Expressed in heart, brain, placenta, lung, liver, skeletal muscle, kidney and pancreas.

DNA Polymerase epsilon Polyclonal Antibody - Protocols

Provided below are standard protocols that you may find useful for product applications.

- [Western Blot](#)
- [Blocking Peptides](#)
- [Dot Blot](#)
- [Immunohistochemistry](#)
- [Immunofluorescence](#)
- [Immunoprecipitation](#)
- [Flow Cytometry](#)
- [Cell Culture](#)

DNA Polymerase epsilon Polyclonal Antibody - Images



Tissue/cell: rat brain tissue; 4% Paraformaldehyde-fixed and paraffin-embedded;

Antigen retrieval: citrate buffer (0.01M, pH 6.0), Boiling bathing for 15min; Block endogenous peroxidase by 3% Hydrogen peroxide for 30min; Blocking buffer (normal goat serum,C-0005) at 37°C for 20 min;

Incubation: Anti-DNA Polymerase epsilon Polyclonal Antibody, Unconjugated(bs-14355R) 1:200, overnight at 4°C, followed by conjugation to the secondary antibody(SP-0023) and DAB(C-0010) staining