

DDC Antibody (N-term)
Affinity Purified Rabbit Polyclonal Antibody (Pab)
Catalog # AP5536a

Specification

DDC Antibody (N-term) - Product Information

Application	IF, WB, IHC-P, FC,E
Primary Accession	P20711
Other Accession	NP_000781.1
Reactivity	Human, Mouse
Host	Rabbit
Clonality	Polyclonal
Isotype	Rabbit IgG
Antigen Region	32-61

DDC Antibody (N-term) - Additional Information

Gene ID 1644

Other Names

Aromatic-L-amino-acid decarboxylase, AADC, DOPA decarboxylase, DDC, DDC, AADC

Target/Specificity

This DDC antibody is generated from rabbits immunized with a KLH conjugated synthetic peptide between 32-61 amino acids from the N-terminal region of human DDC.

Dilution

IF~~1:10~50
WB~~1:1000
IHC-P~~1:50~100
FC~~1:10~50

Format

Purified polyclonal antibody supplied in PBS with 0.09% (W/V) sodium azide. This antibody is purified through a protein A column, followed by peptide affinity purification.

Storage

Maintain refrigerated at 2-8°C for up to 2 weeks. For long term storage store at -20°C in small aliquots to prevent freeze-thaw cycles.

Precautions

DDC Antibody (N-term) is for research use only and not for use in diagnostic or therapeutic procedures.

DDC Antibody (N-term) - Protein Information

Name DDC {ECO:0000303|PubMed:15532536, ECO:0000312|HGNC:HGNC:2719}

Function Catalyzes the decarboxylation of L-3,4-dihydroxyphenylalanine (DOPA) to dopamine and L-5-hydroxytryptophan to serotonin.

Tissue Location

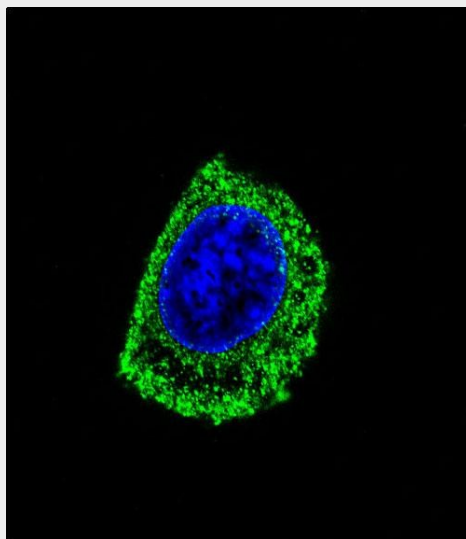
[Isoform 2]: High expression in kidney.

DDC Antibody (N-term) - Protocols

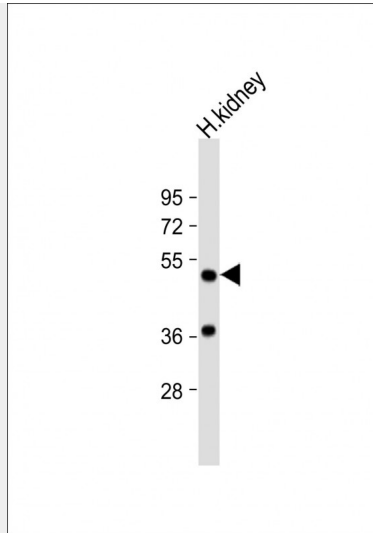
Provided below are standard protocols that you may find useful for product applications.

- [Western Blot](#)
- [Blocking Peptides](#)
- [Dot Blot](#)
- [Immunohistochemistry](#)
- [Immunofluorescence](#)
- [Immunoprecipitation](#)
- [Flow Cytometry](#)
- [Cell Culture](#)

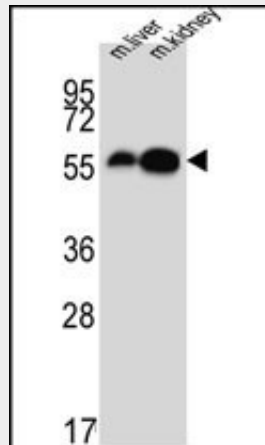
DDC Antibody (N-term) - Images



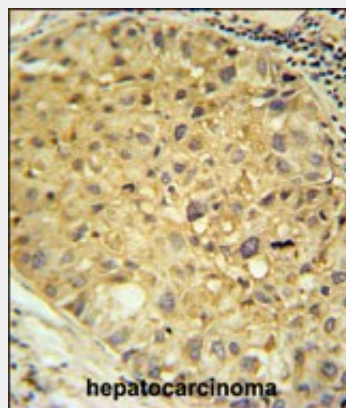
Confocal immunofluorescent analysis of DDC Antibody (N-term)(Cat#AP5536a) with HepG2 cell followed by Alexa Fluor® 488-conjugated goat anti-rabbit IgG (green). DAPI was used to stain the cell nuclear (blue).



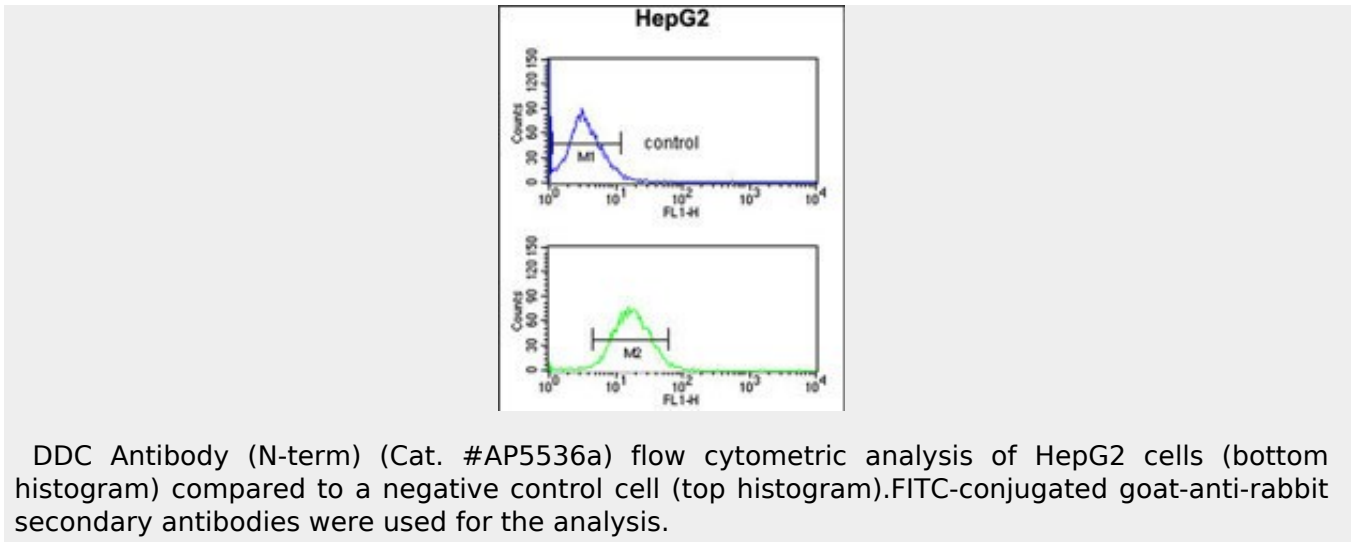
Anti-DDC Antibody (N-term) at 1:1000 dilution + human kidney lysate Lysates/proteins at 20 μ g per lane. Secondary Goat Anti-Rabbit IgG, (H+L), Peroxidase conjugated at 1/10000 dilution. Predicted band size : 54 kDa Blocking/Dilution buffer: 5% NFDM/TBST.



DDC Antibody (N-term) (Cat. #AP5536a) western blot analysis in mouse liver,kidney tissue lysates (15ug/lane).This demonstrates the DDC antibody detected DDC protein (arrow).



DDC Antibody (N-term) (Cat. #AP5536a) immunohistochemistry analysis in formalin fixed and paraffin embedded human hepatocarcinoma followed by peroxidase conjugation of the secondary antibody and DAB staining. This data demonstrates the use of the DDC Antibody (N-term) for immunohistochemistry. Clinical relevance has not been evaluated.



DDC Antibody (N-term) - Background

This protein catalyzes the decarboxylation of L-3,4-dihydroxyphenylalanine (DOPA) to dopamine, L-5-hydroxytryptophan to serotonin and L-tryptophan to tryptamine. Defects in this gene are the cause of aromatic L-amino-acid decarboxylase deficiency (AADCD). AADCD deficiency is an inborn error in neurotransmitter metabolism that leads to combined serotonin and catecholamine deficiency.

DDC Antibody (N-term) - References

Kokkinou, I., et al. J. Neuroimmunol. 216 (1-2), 51-58 (2009) ; Meda, S.A., et al. Neuroimage (2009)
 Ishikawa, S., et al. J. Biol. Chem. 284(42):28832-28844(2009) Trevino, L.R., et al. Nat. Genet.
 41(9):1001-1005(2009)