

CHST6 Polyclonal Antibody
Purified Rabbit Polyclonal Antibody (Pab)
Catalog # AP55349**Specification**

CHST6 Polyclonal Antibody - Product Information

Application	WB
Primary Accession	O9GZX3
Reactivity	Dog, Bovine
Host	Rabbit
Clonality	Polyclonal
Calculated MW	44099

CHST6 Polyclonal Antibody - Additional Information**Gene ID** 4166**Other Names**

Carbohydrate sulfotransferase 6, 2.8.2.-, Corneal N-acetylglucosamine-6-O-sulfotransferase, C-GlcNAc6ST, hCGn6ST, Galactose/N-acetylglucosamine/N-acetylglucosamine 6-O-sulfotransferase 4-beta, GST4-beta, N-acetylglucosamine 6-O-sulfotransferase 5, GlcNAc6ST-5, Gn6st-5, CHST6

Format

0.01M TBS(pH7.4), 0.09% (W/V) sodium azide and 50% Glycerol

Storage

Store at -20 °C for one year. Avoid repeated freeze/thaw cycles. When reconstituted in sterile pH 7.4 0.01M PBS or diluent of antibody the antibody is stable for at least two weeks at 2-4 °C.

CHST6 Polyclonal Antibody - Protein Information**Name** CHST6 ([HGNC:6938](#))**Function**

Sulfotransferase that utilizes 3'-phospho-5'-adenylyl sulfate (PAPS) as sulfonate donor to catalyze the transfer of sulfate to position 6 of non-reducing N-acetylglucosamine (GlcNAc) residues of keratan (PubMed: [11278593](http://www.uniprot.org/citations/11278593) target="_blank">11278593, PubMed: [11352640](http://www.uniprot.org/citations/11352640) target="_blank">11352640, PubMed: [12218059](http://www.uniprot.org/citations/12218059) target="_blank">12218059, PubMed: [17690104](http://www.uniprot.org/citations/17690104) target="_blank">17690104). Cooperates with B4GALT4 galactosyltransferase and B3GNT7 N-acetylglucosaminyltransferase to construct and elongate the sulfated disaccharide unit [->3Galbeta1->4(6-sulfoGlcNAcbeta)1->] within keratan sulfate polymer. Involved in biosynthesis of keratan sulfate in cornea, with an impact on proteoglycan fibril organization and corneal transparency (PubMed: [11278593](http://www.uniprot.org/citations/11278593) target="_blank">11278593, PubMed: [12218059](http://www.uniprot.org/citations/12218059) target="_blank">12218059, PubMed: [17690104](http://www.uniprot.org/citations/17690104) target="_blank">17690104). Involved in sulfation of endothelial mucins such as GLYCAM1

(PubMed:11352640).

Cellular Location

Golgi apparatus membrane; Single-pass type II membrane protein

Tissue Location

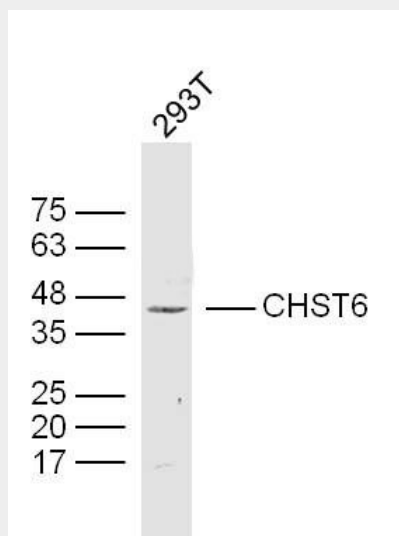
Expressed in cornea. Mainly expressed in brain. Also expressed in spinal cord and trachea

CHST6 Polyclonal Antibody - Protocols

Provided below are standard protocols that you may find useful for product applications.

- [Western Blot](#)
- [Blocking Peptides](#)
- [Dot Blot](#)
- [Immunohistochemistry](#)
- [Immunofluorescence](#)
- [Immunoprecipitation](#)
- [Flow Cytometry](#)
- [Cell Culture](#)

CHST6 Polyclonal Antibody - Images



Sample: 293T (human)Cell Lysate at 40 ug
Primary: Anti-CHST6(bs-13937R) at 1/300 dilution
Secondary: IRDye800CW Goat Anti-Rabbit IgG at 1/20000 dilution
Predicted band size: 44 kD
Observed band size: 44 kD