

CHST3 Polyclonal Antibody
Purified Rabbit Polyclonal Antibody (Pab)
Catalog # AP55347**Specification**

CHST3 Polyclonal Antibody - Product Information

Application	WB, IHC-P
Primary Accession	O7LGC8
Host	Rabbit
Clonality	Polyclonal
Calculated MW	54706

CHST3 Polyclonal Antibody - Additional Information**Gene ID** 9469**Other Names**

Carbohydrate sulfotransferase 3, 2.8.2.17, Chondroitin 6-O-sulfotransferase 1, C6ST-1, Chondroitin 6-sulfotransferase, Galactose/N-acetylglucosamine/N-acetylglucosamine 6-O-sulfotransferase 0, GST-0, CHST3

Format

0.01M TBS(pH7.4), 0.09% (W/V) sodium azide and 50% Glycerol

Storage

Store at -20 °C for one year. Avoid repeated freeze/thaw cycles. When reconstituted in sterile pH 7.4 0.01M PBS or diluent of antibody the antibody is stable for at least two weeks at 2-4 °C.

CHST3 Polyclonal Antibody - Protein Information**Name** CHST3**Function**

Sulfotransferase that utilizes 3'-phospho-5'-adenylyl sulfate (PAPS) as sulfonate donor to catalyze the transfer of sulfate to position 6 of the N-acetylgalactosamine (GalNAc) residue of chondroitin (PubMed: [15215498](http://www.uniprot.org/citations/15215498)), (PubMed: [9714738](http://www.uniprot.org/citations/9714738)), (PubMed: [9883891](http://www.uniprot.org/citations/9883891)). Chondroitin sulfate constitutes the predominant proteoglycan present in cartilage and is distributed on the surfaces of many cells and extracellular matrices (PubMed: [9714738](http://www.uniprot.org/citations/9714738)). Catalyzes with a lower efficiency the sulfation of Gal residues of keratan sulfate, another glycosaminoglycan (PubMed: [9714738](http://www.uniprot.org/citations/9714738)). Can also catalyze the sulfation of the Gal residues in sialyl N-acetylglucosamine (sialyl LacNAc) oligosaccharides (By similarity). May play a role in the maintenance of naive T-lymphocytes in the spleen (By similarity).

Cellular Location

Golgi apparatus membrane; Single- pass type II membrane protein

Tissue Location

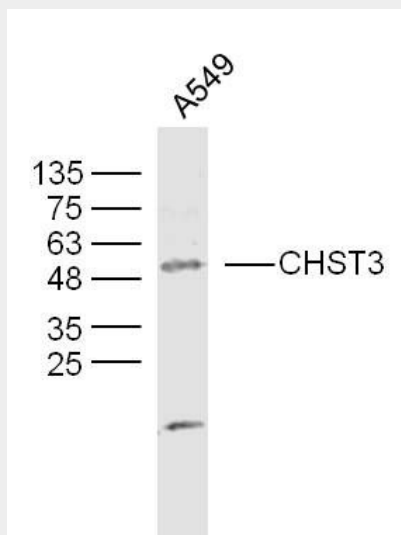
Widely expressed in adult tissues. Expressed in heart, placenta, skeletal muscle and pancreas. Also expressed in various immune tissues such as spleen, lymph node, thymus and appendix

CHST3 Polyclonal Antibody - Protocols

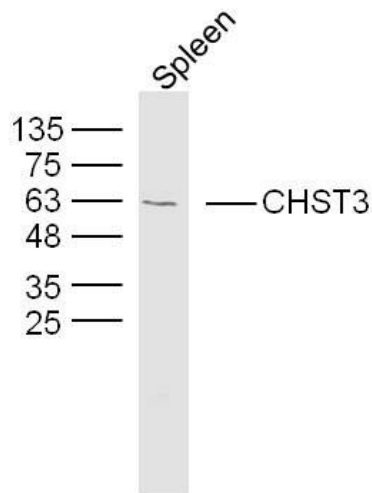
Provided below are standard protocols that you may find useful for product applications.

- [Western Blot](#)
- [Blocking Peptides](#)
- [Dot Blot](#)
- [Immunohistochemistry](#)
- [Immunofluorescence](#)
- [Immunoprecipitation](#)
- [Flow Cytometry](#)
- [Cell Culture](#)

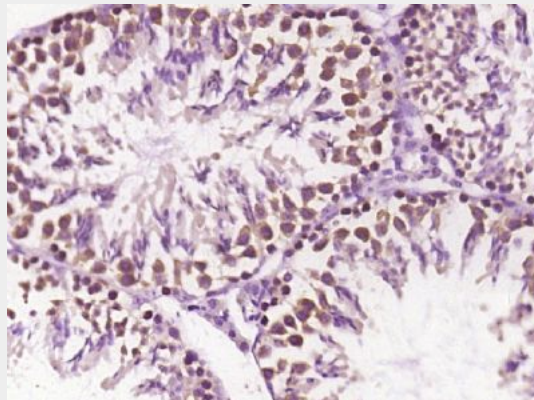
CHST3 Polyclonal Antibody - Images



Sample: A549 (human)Cell Lysate at 40 ug
Primary: Anti-CHST(bs-13935R) at 1/300 dilution
Secondary: IRDye800CW Goat Anti-Rabbit IgG at 1/20000 dilution
Predicted band size: 55 kD
Observed band size: 55 kD



Sample: Spleen (Mouse) Lysate at 40 ug
Primary: Anti-CHST3(bs-13935R) at 1/300 dilution
Secondary: IRDye800CW Goat Anti-Rabbit IgG at 1/20000 dilution
Predicted band size: 55 kD
Observed band size: 60 kD



Paraformaldehyde-fixed, paraffin embedded (mouse testis tissue); Antigen retrieval by boiling in sodium citrate buffer (pH6.0) for 15min; Block endogenous peroxidase by 3% hydrogen peroxide for 20 minutes; Blocking buffer (normal goat serum) at 37°C for 30min; Antibody incubation with (CHST3) Polyclonal Antibody, Unconjugated (bs-13935R) at 1:400 overnight at 4°C, followed by operating according to SP Kit(Rabbit) (sp-0023) instructions and DAB staining.