

CFC1 Polyclonal Antibody
Purified Rabbit Polyclonal Antibody (Pab)
Catalog # AP55325

Specification

CFC1 Polyclonal Antibody - Product Information

Application	WB, IHC-P
Primary Accession	POCG37
Host	Rabbit
Clonality	Polyclonal
Calculated MW	24612

CFC1 Polyclonal Antibody - Additional Information

Gene ID 55997

Other Names

Cryptic protein, Cryptic family protein 1, CFC1

Format

0.01M TBS(pH7.4), 0.09% (W/V) sodium azide and 50% Glyce

Storage

Store at -20 °C for one year. Avoid repeated freeze/thaw cycles. When reconstituted in sterile pH 7.4 0.01M PBS or diluent of antibody the antibody is stable for at least two weeks at 2-4 °C.

CFC1 Polyclonal Antibody - Protein Information

Name CFC1

Function

NODAL coreceptor involved in the correct establishment of the left-right axis. May play a role in mesoderm and/or neural patterning during gastrulation.

Cellular Location

Cell membrane; Lipid-anchor, GPI-anchor. Secreted. Note=Does not exhibit a typical GPI- signal sequence. The C-ter hydrophilic extension of the GPI-signal sequence reduces the efficiency of processing and could lead to the production of an secreted unprocessed form. This extension is found only in primates

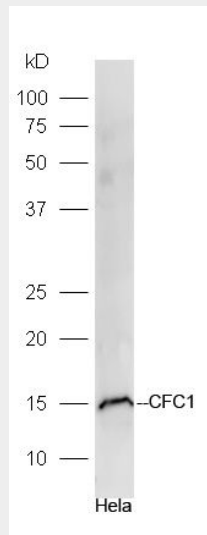
CFC1 Polyclonal Antibody - Protocols

Provided below are standard protocols that you may find useful for product applications.

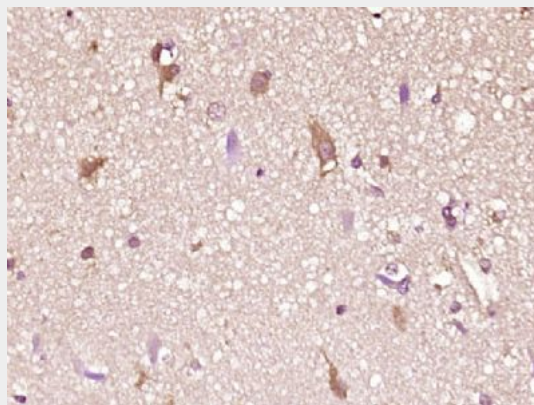
- [Western Blot](#)
- [Blocking Peptides](#)

- [Dot Blot](#)
- [Immunohistochemistry](#)
- [Immunofluorescence](#)
- [Immunoprecipitation](#)
- [Flow Cytometry](#)
- [Cell Culture](#)

CFC1 Polyclonal Antibody - Images



Protein: HeLa(human) lysate at 40ug;
Primary: rabbit Anti-CFC1 (bs-13873R) at 1:300;
Secondary: HRP conjugated Goat-Anti-rabbit IgG(bs-0295G-HRP) at 1: 5000;
Predicted band size: 15 kD
Observed band size: 15 kD



Paraformaldehyde-fixed, paraffin embedded (Human glioma); Antigen retrieval by boiling in sodium citrate buffer (pH6.0) for 15min; Block endogenous peroxidase by 3% hydrogen peroxide for 20 minutes; Blocking buffer (normal goat serum) at 37°C for 30min; Antibody incubation with (CFC1) Polyclonal Antibody, Unconjugated (bs-13873R) at 1:400 overnight at 4°C, followed by operating according to SP Kit(Rabbit) (sp-0023) instructions and DAB staining.