

**CEP192 Polyclonal Antibody**  
**Purified Rabbit Polyclonal Antibody (Pab)**  
**Catalog # AP55320**

**Specification**

---

**CEP192 Polyclonal Antibody - Product Information**

Application	IHC-P, WB
Primary Accession	<a href="#">Q8TEP8</a>
Host	Rabbit
Clonality	Polyclonal
Calculated MW	279111

**CEP192 Polyclonal Antibody - Additional Information**

**Gene ID** 55125

**Other Names**

Centrosomal protein of 192 kDa, Cep192, Cep192/SPD-2, CEP192 ([http://www.genenames.org/cgi-bin/gene\\_symbol\\_report?hgnc\\_id=25515](http://www.genenames.org/cgi-bin/gene_symbol_report?hgnc_id=25515) target="\_blank">HGNC:25515</a>), KIAA1569

**Format**

0.01M TBS(pH7.4), 0.09% (W/V) sodium azide and 50% Glycerol

**Storage**

Store at -20 °C for one year. Avoid repeated freeze/thaw cycles. When reconstituted in sterile pH 7.4 0.01M PBS or diluent of antibody the antibody is stable for at least two weeks at 2-4 °C.

**CEP192 Polyclonal Antibody - Protein Information**

**Name** CEP192 ([HGNC:25515](#))

**Synonyms** KIAA1569

**Function**

Required for mitotic centrosome maturation and bipolar spindle assembly (PubMed:[17980596](http://www.uniprot.org/citations/17980596)</a>, PubMed:[18207742](http://www.uniprot.org/citations/18207742)</a>, PubMed:[25042804](http://www.uniprot.org/citations/25042804)</a>). Appears to be a major regulator of pericentriolar material (PCM) recruitment, centrosome maturation, and centriole duplication (PubMed:[17980596](http://www.uniprot.org/citations/17980596)</a>, PubMed:[18207742](http://www.uniprot.org/citations/18207742)</a>, PubMed:[25042804](http://www.uniprot.org/citations/25042804)</a>). Centrosome- specific activating scaffold for AURKA and PLK1 (PubMed:[25042804](http://www.uniprot.org/citations/25042804)</a>).

**Cellular Location**

Cytoplasm, cytoskeleton, microtubule organizing center, centrosome, centriole.

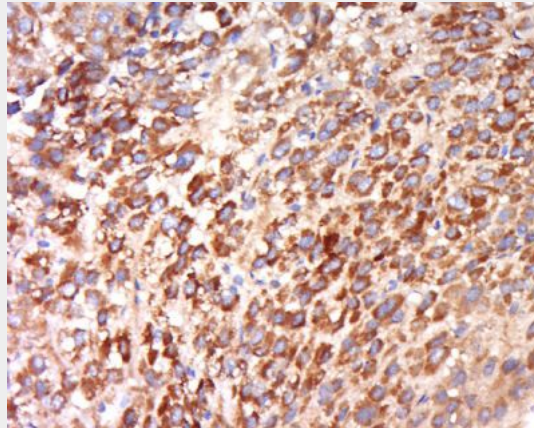
Note=Pericentriolar location in mitotic centrosomes

### CEP192 Polyclonal Antibody - Protocols

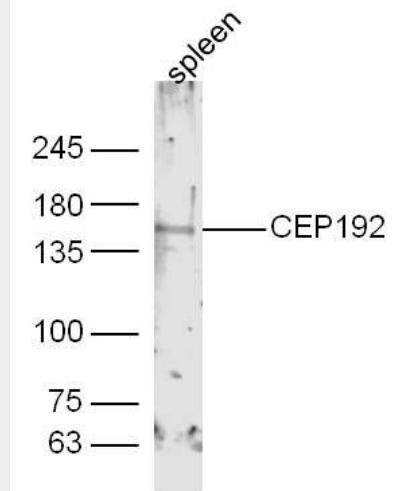
Provided below are standard protocols that you may find useful for product applications.

- [Western Blot](#)
- [Blocking Peptides](#)
- [Dot Blot](#)
- [Immunohistochemistry](#)
- [Immunofluorescence](#)
- [Immunoprecipitation](#)
- [Flow Cytometry](#)
- [Cell Culture](#)

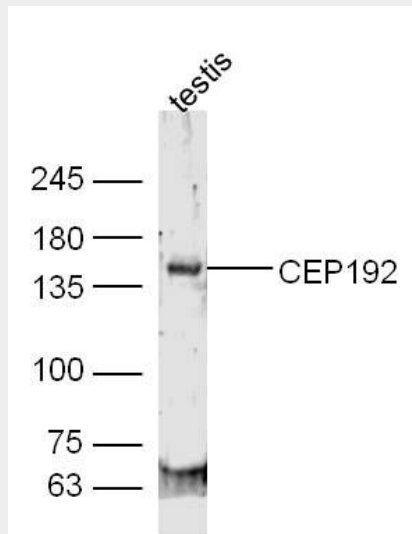
### CEP192 Polyclonal Antibody - Images



Tissue/cell: human liver cancer; 4% Paraformaldehyde-fixed and paraffin-embedded;  
Antigen retrieval: citrate buffer ( 0.01M, pH 6.0 ), Boiling bathing for 15min; Block endogenous peroxidase by 3% Hydrogen peroxide for 30min; Blocking buffer (normal goat serum,C-0005) at 37°C for 20 min;  
Incubation: Anti-CEP192 Polyclonal Antibody, Unconjugated(bs-13856R) 1:500, overnight at 4°C, followed by conjugation to the secondary antibody(SP-0023) and DAB(C-0010) staining



Sample:  
Spleen (Mouse) Lysate at 40 ug  
Primary: Anti-CEP192 (bs-13856R) at 1/300 dilution  
Secondary: IRDye800CW Goat Anti-Rabbit IgG at 1/20000 dilution  
Predicted band size: 213 kD  
Observed band size: 150 kD



Sample:  
Testis (Mouse) Lysate at 40 ug  
Primary: Anti-CEP192 (bs-13856R) at 1/300 dilution  
Secondary: IRDye800CW Goat Anti-Rabbit IgG at 1/20000 dilution  
Predicted band size: 213 kD  
Observed band size: 150 kD